

Hint2 (H-60): sc-292201

BACKGROUND

Hint2 (histidine triad nucleotide binding protein 2), also known as HIT-17, is a 163 amino acid secreted protein that contains one HIT domain, a histidine triad that has catalytic activity toward the α -phosphate of ribonucleotides. Via its HIT domain, Hint2 is thought to function as a hydrolase that is encoded by a gene which maps to chromosome 9. Chromosome 9 contains 145 million base pairs and comprises 4% of the human genome, encoding nearly 900 genes. Hereditary hemorrhagic telangiectasia and familial dysautonomia are both associated with chromosome 9. Notably, chromosome 9 encompasses the largest interferon family gene cluster. Chromosome 9 is partnered with chromosome 22 in translocations that lead to the aberrant production of a Bcr-Abl fusion protein often found in leukemias.

REFERENCES

- Brenner, C. 2002. Hint, Fhit, and GalT: function, structure, evolution, and mechanism of three branches of the histidine triad superfamily of nucleotide hydrolases and transferases. *Biochemistry* 41: 9003-9014.
- Online Mendelian Inheritance in Man, OMIM™. 2002. Johns Hopkins University, Baltimore, MD. MIM Number: 609997. World Wide Web URL: <http://www.ncbi.nlm.nih.gov/omim/>
- Humphray, S.J., et al. 2004. DNA sequence and analysis of human chromosome 9. *Nature* 429: 369-374.
- Coppo, P., et al. 2006. BCR-ABL activates STAT3 via JAK and MEK pathways in human cells. *Br. J. Haematol.* 134: 171-179.
- Zheng, X., et al. 2006. BCR and its mutants, the reciprocal t(9;22)-associated ABL/BCR fusion proteins, differentially regulate the cytoskeleton and cell motility. *BMC Cancer* 7: 262.
- Burmeister, T., et al. 2007. Atypical BCR-ABL mRNA transcripts in adult acute lymphoblastic leukemia. *Haematologica* 92: 1699-1702.
- Cottin, V., et al. 2007. Pulmonary vascular manifestations of hereditary hemorrhagic telangiectasia (rendu-osler disease). *Respiration* 74: 361-378.
- Gardiner, J., et al. 2007. Potential role of tubulin acetylation and microtubule-based protein trafficking in familial dysautonomia. *Traffic* 8: 1145-1149.
- Temtamy, S.A., et al. 2007. Phenotypic and cytogenetic spectrum of 9p trisomy. *Genet. Couns.* 18: 29-48.

CHROMOSOMAL LOCATION

Genetic locus: HINT2 (human) mapping to 9p13.3; Hint2 (mouse) mapping to 4 B1.

SOURCE

Hint2 (H-60) is a rabbit polyclonal antibody raised against amino acids 21-80 mapping near the N-terminus of Hint2 of human origin.

PRODUCT

Each vial contains 200 μ g IgG in 1.0 ml of PBS with < 0.1% sodium azide and 0.1% gelatin.

APPLICATIONS

Hint2 (H-60) is recommended for detection of Hint2 of mouse, rat and human origin by Western Blotting (starting dilution 1:200, dilution range 1:100-1:1000), immunoprecipitation [1-2 μ g per 100-500 μ g of total protein (1 ml of cell lysate)], immunofluorescence (starting dilution 1:50, dilution range 1:50-1:500) and solid phase ELISA (starting dilution 1:30, dilution range 1:30-1:3000).

Hint2 (H-60) is also recommended for detection of Hint2 in additional species, including bovine.

Suitable for use as control antibody for Hint2 siRNA (h): sc-92707, Hint2 siRNA (m): sc-145967, Hint2 shRNA Plasmid (h): sc-92707-SH, Hint2 shRNA Plasmid (m): sc-145967-SH, Hint2 shRNA (h) Lentiviral Particles: sc-92707-V and Hint2 shRNA (m) Lentiviral Particles: sc-145967-V.

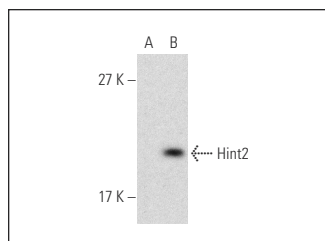
Molecular Weight of Hint2: 17 kDa.

Positive Controls: Hint2 (h2): 293T Lysate: sc-371761.

RECOMMENDED SECONDARY REAGENTS

To ensure optimal results, the following support (secondary) reagents are recommended: 1) Western Blotting: use goat anti-rabbit IgG-HRP: sc-2004 (dilution range: 1:2000-1:100,000) or Cruz Marker™ compatible goat anti-rabbit IgG-HRP: sc-2030 (dilution range: 1:2000-1:5000), Cruz Marker™ Molecular Weight Standards: sc-2035, TBS Blotto A Blocking Reagent: sc-2333 and Western Blotting Luminol Reagent: sc-2048. 2) Immunoprecipitation: use Protein A/G PLUS-Agarose: sc-2003 (0.5 ml agarose/2.0 ml). 3) Immunofluorescence: use goat anti-rabbit IgG-FITC: sc-2012 (dilution range: 1:100-1:400) or goat anti-rabbit IgG-TR: sc-2780 (dilution range: 1:100-1:400) with UltraCruz™ Mounting Medium: sc-24941.

DATA



Hint2 (H-60): sc-292201. Western blot analysis of Hint2 expression in non-transfected: sc-117752 (A) and human Hint2 transfected: sc-371761 (B) 293T whole cell lysates.

STORAGE

Store at 4° C, **DO NOT FREEZE**. Stable for one year from the date of shipment. Non-hazardous. No MSDS required.

RESEARCH USE

For research use only, not for use in diagnostic procedures.