

HSPA6 (H-50): sc-292204

BACKGROUND

The heat shock proteins (HSPs) comprise a group of highly conserved, abundantly expressed proteins with diverse functions, including the assembly and sequestering of multi-protein complexes, the transportation of nascent polypeptide chains across cellular membranes and the regulation of protein folding. HSPA6 (heat shock 70kDa protein 6), also known as HSP70B, is a 643 amino acid protein that belongs to the HSP family and, like other HSP proteins, mediates protein folding within the cytosol, as well as within other organelles throughout the cell. The gene encoding HSPA6 maps to human chromosome 1, which spans 260 million base pairs, contains over 3,000 genes and comprises nearly 8% of the human genome. Chromosome 1 houses a large number of disease-associated genes, including those that are involved in familial adenomatous polyposis, Stickler syndrome, Parkinson's disease, Gaucher disease, schizophrenia and Usher syndrome. Aberrations in chromosome 1 are found in a variety of cancers, including head and neck cancer, malignant melanoma and multiple myeloma.

CHROMOSOMAL LOCATION

Genetic locus: HSPA6 (human) mapping to 1q23.3.

SOURCE

HSPA6 (H-50) is a rabbit polyclonal antibody raised against amino acids 591-640 mapping near the C-terminus of HSPA6 of human origin.

PRODUCT

Each vial contains 200 µg IgG in 1.0 ml of PBS with < 0.1% sodium azide and 0.1% gelatin.

STORAGE

Store at 4° C, ****DO NOT FREEZE****. Stable for one year from the date of shipment. Non-hazardous. No MSDS required.

RESEARCH USE

For research use only, not for use in diagnostic procedures.

APPLICATIONS

HSPA6 (H-50) is recommended for detection of HSPA6 of human origin by Western Blotting (starting dilution 1:200, dilution range 1:100-1:1000), immunoprecipitation [1-2 µg per 100-500 µg of total protein (1 ml of cell lysate)], immunofluorescence (starting dilution 1:50, dilution range 1:50-1:500) and solid phase ELISA (starting dilution 1:30, dilution range 1:30-1:3000); non cross-reactive with other HSPA family members.

HSPA6 (H-50) is also recommended for detection of HSPA6 in additional species, including equine, bovine and porcine.

Suitable for use as control antibody for HSPA6 siRNA (h): sc-88826, HSPA6 shRNA Plasmid (h): sc-88826-SH and HSPA6 shRNA (h) Lentiviral Particles: sc-88826-V.

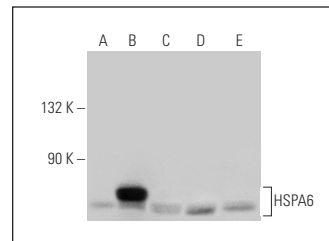
Molecular Weight of HSPA6: 70 kDa.

Positive Controls: HSPA6 (h3): 293T Lysate: sc-173854, HeLa whole cell lysate: sc-2200 or MCF7 whole cell lysate: sc-2206.

RECOMMENDED SECONDARY REAGENTS

To ensure optimal results, the following support (secondary) reagents are recommended: 1) Western Blotting: use goat anti-rabbit IgG-HRP: sc-2004 (dilution range: 1:2000-1:100,000) or Cruz Marker™ compatible goat anti-rabbit IgG-HRP: sc-2030 (dilution range: 1:2000-1:5000), Cruz Marker™ Molecular Weight Standards: sc-2035, TBS Blotto A Blocking Reagent: sc-2333 and Western Blotting Luminol Reagent: sc-2048. 2) Immunoprecipitation: use Protein A/G PLUS-Agarose: sc-2003 (0.5 ml agarose/2.0 ml). 3) Immunofluorescence: use goat anti-rabbit IgG-FITC: sc-2012 (dilution range: 1:100-1:400) or goat anti-rabbit IgG-TR: sc-2780 (dilution range: 1:100-1:400) with UltraCruz™ Mounting Medium: sc-24941.

DATA



HSPA6 (H-50): sc-292204. Western blot analysis of HSPA6 expression in non-transfected 293T: sc-117752 (A), human HSPA6 transfected 293T: sc-173854 (B), HeLa (C), MCF7 (D) and A-431 (E) whole cell lysates.

PROTOCOLS

See our web site at www.scbt.com or our catalog for detailed protocols and support products.

MONOS
Satisfaction
Guaranteed

Try **HSPA6 (G-9): sc-374589** or **HSPA6 (B-8): sc-376193**, our highly recommended monoclonal alternatives to HSPA6 (H-50).