

FAM3B (H-109): sc-292220

BACKGROUND

FAM3B (family with sequence similarity 3, member B), also known as ORF9, C21orf11 or PANDER (pancreatic-derived factor), is a 235 amino acid secreted protein that localizes to discrete vesicular and perinuclear structures. Expressed at high levels in pancreas and at lower levels in kidney, colon, testis, prostate and small intestine, FAM3B functions as an islet-specific cytokine that promotes apoptosis and may inhibit Insulin secretion from β -cells, possibly playing a role in overall pancreatic activity. FAM3B may also function in the regulation of glycemic levels, with possible correlations to the onset of diabetes. Human FAM3B shares 78% sequence identity with its mouse counterpart, suggesting a conserved role between species. Three isoforms of FAM3B, designated A, B and C, exist due to alternative splicing events. The gene encoding FAM3B maps to human chromosome 21, which houses approximately 300 genes and comprises nearly 1.5% of the human genome.

REFERENCES

- Zhu, Y., Xu, G., Patel, A., McLaughlin, M.M., Silverman, C., Knecht, K., Sweitzer, S., Li, X., McDonnell, P., Mirabile, R., Zimmerman, D., Boyce, R., Tierney, L.A., Hu, E., Livi, G.P., Wolf, B., Abdel-Meguid, S.S., Rose, G.D., Aurora, R., Hensley, P., Briggs, M. and Young, P.R. 2002. Cloning, expression, and initial characterization of a novel cytokine-like gene family. *Genomics* 80: 144-150.
- Robert-Cooperman, C.E., Wilson, C.G. and Burkhardt, B.R. 2011. PANDER KO mice on high-fat diet are glucose intolerant yet resistant to fasting hyperglycemia and hyperinsulinemia. *FEBS Lett.* 585: 1345-1349.
- Li, J., Chi, Y., Wang, C., Wu, J., Yang, H., Zhang, D., Zhu, Y., Wang, N., Yang, J. and Guan, Y. 2011. Pancreatic-derived factor promotes lipogenesis in the mouse liver: role of the Forkhead box 1 signaling pathway. *Hepatology* 53: 1906-1916.
- Hou, X., Wang, O., Li, Z., Mou, H., Chen, J., Deng, B., Qian, L., Liu, X. and Le, Y. 2011. Upregulation of pancreatic derived factor (FAM3B) expression in pancreatic β -cells by MCP-1 (CCL2). *Mol. Cell. Endocrinol.* 343: 18-24.
- Wang, C., Burkhardt, B.R., Guan, Y. and Yang, J. 2012. Role of pancreatic-derived factor in type 2 diabetes: evidence from pancreatic β cells and liver. *Nutr. Rev.* 70: 100-106.

CHROMOSOMAL LOCATION

Genetic locus: FAM3B (human) mapping to 21q22.3.

SOURCE

FAM3B (H-109) is a rabbit polyclonal antibody raised against amino acids 1-109 mapping at the N-terminus of FAM3B of human origin.

PRODUCT

Each vial contains 200 μ g IgG in 1.0 ml of PBS with < 0.1% sodium azide and 0.1% gelatin.

RESEARCH USE

For research use only, not for use in diagnostic procedures.

APPLICATIONS

FAM3B (H-109) is recommended for detection of FAM3B of human origin by Western Blotting (starting dilution 1:200, dilution range 1:100-1:1000), immunoprecipitation [1-2 μ g per 100-500 μ g of total protein (1 ml of cell lysate)], immunofluorescence (starting dilution 1:50, dilution range 1:50-1:500) and solid phase ELISA (starting dilution 1:30, dilution range 1:30-1:3000); non cross-reactive with other FAM family members.

Suitable for use as control antibody for FAM3B siRNA (h): sc-91522, FAM3B shRNA Plasmid (h): sc-91522-SH and FAM3B shRNA (h) Lentiviral Particles: sc-91522-V.

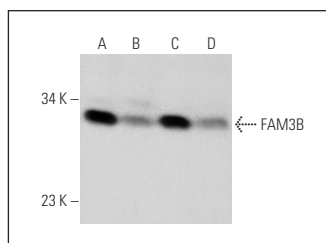
Molecular Weight of FAM3B: 26 kDa.

Positive Controls: Daudi cell lysate: sc-2415, K-562 whole cell lysate: sc-2203 or SK-BR-3 cell lysate: sc-2218.

RECOMMENDED SECONDARY REAGENTS

To ensure optimal results, the following support (secondary) reagents are recommended: 1) Western Blotting: use goat anti-rabbit IgG-HRP: sc-2004 (dilution range: 1:2000-1:100,000) or Cruz Marker™ compatible goat anti-rabbit IgG-HRP: sc-2030 (dilution range: 1:2000-1:5000), Cruz Marker™ Molecular Weight Standards: sc-2035, TBS Blotto A Blocking Reagent: sc-2333 and Western Blotting Luminol Reagent: sc-2048. 2) Immunoprecipitation: use Protein A/G PLUS-Agarose: sc-2003 (0.5 ml agarose/2.0 ml). 3) Immunofluorescence: use goat anti-rabbit IgG-FITC: sc-2012 (dilution range: 1:100-1:400) or goat anti-rabbit IgG-TR: sc-2780 (dilution range: 1:100-1:400) with UltraCruz™ Mounting Medium: sc-24941.

DATA



FAM3B (H-109): sc-292220. Western blot analysis of FAM3B expression in Daudi (A), K-562 (B), SK-BR-3 (C) and HeLa (D) whole cell lysates.

STORAGE

Store at 4° C, **DO NOT FREEZE**. Stable for one year from the date of shipment. Non-hazardous. No MSDS required.

MONOS
Satisfaction
Guaranteed

Try **FAM3B (1E7): sc-517177**, our highly recommended monoclonal alternative to FAM3B (H-109).