

# FAM3B (M-80): sc-292221

## BACKGROUND

FAM3B (family with sequence similarity 3, member B), also known as ORF9, C21orf11 or PANDER (pancreatic-derived factor), is a 235 amino acid secreted protein that localizes to discrete vesicular and perinuclear structures. Expressed at high levels in pancreas and at lower levels in kidney, colon, testis, prostate and small intestine, FAM3B functions as an islet-specific cytokine that promotes apoptosis and may inhibit Insulin secretion from  $\beta$ -cells, possibly playing a role in overall pancreatic activity. FAM3B may also function in the regulation of glycemic levels, with possible correlations to the onset of diabetes. Human FAM3B shares 78% sequence identity with its mouse counterpart, suggesting a conserved role between species. Three isoforms of FAM3B, designated A, B and C, exist due to alternative splicing events. The gene encoding FAM3B maps to human chromosome 21, which houses approximately 300 genes and comprises nearly 1.5% of the human genome.

## CHROMOSOMAL LOCATION

Genetic locus: FAM3B (human) mapping to 21q22.3; ORF9 (mouse) mapping to 16 C4.

## SOURCE

FAM3B (M-80) is a rabbit polyclonal antibody raised against amino acids 29-108 mapping within an internal region of FAM3B of mouse origin.

## PRODUCT

Each vial contains 200  $\mu$ g IgG in 1.0 ml of PBS with < 0.1% sodium azide and 0.1% gelatin.

## STORAGE

Store at 4° C, **\*\*DO NOT FREEZE\*\***. Stable for one year from the date of shipment. Non-hazardous. No MSDS required.

## APPLICATIONS

FAM3B (M-80) is recommended for detection of FAM3B of mouse, rat and, to a lesser extent, human origin by Western Blotting (starting dilution 1:200, dilution range 1:100-1:1000), immunoprecipitation [1-2  $\mu$ g per 100-500  $\mu$ g of total protein (1 ml of cell lysate)], immunofluorescence (starting dilution 1:50, dilution range 1:50-1:500) and solid phase ELISA (starting dilution 1:30, dilution range 1:30-1:3000); non cross-reactive with other FAM family members.

FAM3B (M-80) is also recommended for detection of FAM3B in additional species, including equine and bovine.

Suitable for use as control antibody for FAM3B siRNA (h): sc-91522, FAM3B siRNA (m): sc-145039, FAM3B shRNA Plasmid (h): sc-91522-SH, FAM3B shRNA Plasmid (m): sc-145039-SH, FAM3B shRNA (h) Lentiviral Particles: sc-91522-V and FAM3B shRNA (m) Lentiviral Particles: sc-145039-V.

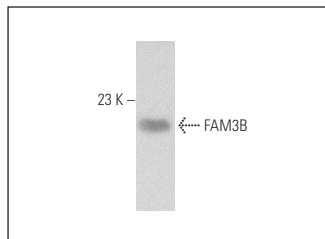
Molecular Weight of FAM3B: 26 kDa.

Positive Controls: mouse pancreas extract: sc-364244.

## RECOMMENDED SECONDARY REAGENTS

To ensure optimal results, the following support (secondary) reagents are recommended: 1) Western Blotting: use goat anti-rabbit IgG-HRP: sc-2004 (dilution range: 1:2000-1:100,000) or Cruz Marker™ compatible goat anti-rabbit IgG-HRP: sc-2030 (dilution range: 1:2000-1:5000), Cruz Marker™ Molecular Weight Standards: sc-2035, TBS Blotto A Blocking Reagent: sc-2333 and Western Blotting Luminol Reagent: sc-2048. 2) Immunoprecipitation: use Protein A/G PLUS-Agarose: sc-2003 (0.5 ml agarose/2.0 ml). 3) Immunofluorescence: use goat anti-rabbit IgG-FITC: sc-2012 (dilution range: 1:100-1:400) or goat anti-rabbit IgG-TR: sc-2780 (dilution range: 1:100-1:400) with UltraCruz™ Mounting Medium: sc-24941.

## DATA



FAM3B (M-80): sc-292221. Western blot analysis of FAM3B expression in mouse pancreas tissue extract.

## RESEARCH USE

For research use only, not for use in diagnostic

## PROTOCOLS

See our web site at [www.scbt.com](http://www.scbt.com) or our catalog for detailed protocols and support products

**MONOS**  
Satisfaction  
Guaranteed

Try **FAM3B (1E7): sc-517177**, our highly recommended monoclonal alternative to FAM3B (M-80).