

EI24 (H-101): sc-292270

BACKGROUND

EI24 (etoposide-induced protein 2.4 homolog), also known as PIG8 (p53-induced gene 8 protein), is a 340 amino acid multi-pass membrane protein that belongs to the EI24 family and interacts with Bcl-2. Acting as a negative growth regulator via the p53-mediated apoptosis pathway, EI24 regulates the formation of degradative autolysosomes during autophagy. The gene encoding EI24 consists of approximately 15,464 bases and maps to human chromosome 11q24.2. Chromosome 11 houses over 1,400 genes and comprises nearly 4% of the human genome. Jervell and Lange-Nielsen syndrome, Jacobsen syndrome, Niemann-Pick disease, hereditary angioedema and Smith-Lemli-Opitz syndrome are associated with defects in genes that map to chromosome 11.

REFERENCES

1. Polyak, K., et al. 1997. A model for p53-induced apoptosis. *Nature* 389: 300-305.
2. Gu, Z., et al. 2000. The p53-inducible gene EI24/PIG8 localizes to human chromosome 11q23 and the proximal region of mouse chromosome 9. *Cytogenet. Cell Genet.* 89: 230-233.
3. Gu, Z., et al. 2000. ei24, a p53 response gene involved in growth suppression and apoptosis. *Mol. Cell. Biol.* 20: 233-241.
4. Online Mendelian Inheritance in Man, OMIM[™]. 2000. Johns Hopkins University, Baltimore, MD. MIM Number: 605170. World Wide Web URL: <http://www.ncbi.nlm.nih.gov/omim/>
5. Gentile, M., et al. 2001. Candidate tumour suppressor genes at 11q23-q24 in breast cancer: evidence of alterations in PIG8, a gene involved in p53-induced apoptosis. *Oncogene* 20: 7753-7760.
6. Schuchman, E.H. 2007. The pathogenesis and treatment of acid sphingomyelinase-deficient Niemann-Pick disease. *J. Inherit. Metab. Dis.* 30: 654-663.
7. Bhuiyan, Z.A., et al. 2008. An intronic mutation leading to incomplete skipping of exon-2 in KCNQ1 rescues hearing in Jervell and Lange-Nielsen syndrome. *Prog. Biophys. Mol. Biol.* 98: 319-327.
8. Coldren, C.D., et al. 2009. Chromosomal microarray mapping suggests a role for BSX and Neurogranin in neurocognitive and behavioral defects in the 11q terminal deletion disorder (Jacobsen syndrome). *Neurogenetics* 10: 89-95.

CHROMOSOMAL LOCATION

Genetic locus: EI24 (human) mapping to 11q24.2; Ei24 (mouse) mapping to 9 A4.

SOURCE

EI24 (H-101) is a rabbit polyclonal antibody raised against amino acids 181-281 mapping within an internal region of EI24 of human origin.

PRODUCT

Each vial contains 200 µg IgG in 1.0 ml of PBS with < 0.1% sodium azide and 0.1% gelatin.

APPLICATIONS

EI24 (H-101) is recommended for detection of EI24 of mouse, rat and human origin by Western Blotting (starting dilution 1:200, dilution range 1:100-1:1000), immunoprecipitation [1-2 µg per 100-500 µg of total protein (1 ml of cell lysate)], immunofluorescence (starting dilution 1:50, dilution range 1:50-1:500) and solid phase ELISA (starting dilution 1:30, dilution range 1:30-1:3000).

EI24 (H-101) is also recommended for detection of EI24 in additional species, including equine, canine, bovine and porcine.

Suitable for use as control antibody for EI24 siRNA (h): sc-43748, EI24 siRNA (m): sc-144606, EI24 shRNA Plasmid (h): sc-43748-SH, EI24 shRNA Plasmid (m): sc-144606-SH, EI24 shRNA (h) Lentiviral Particles: sc-43748-V and EI24 shRNA (m) Lentiviral Particles: sc-144606-V.

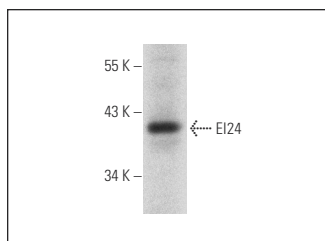
Molecular Weight of EI24: 39 kDa.

Positive Controls: mouse liver extract: sc-2256.

RECOMMENDED SECONDARY REAGENTS

To ensure optimal results, the following support (secondary) reagents are recommended: 1) Western Blotting: use goat anti-rabbit IgG-HRP: sc-2004 (dilution range: 1:2000-1:100,000) or Cruz Marker[™] compatible goat anti-rabbit IgG-HRP: sc-2030 (dilution range: 1:2000-1:5000), Cruz Marker[™] Molecular Weight Standards: sc-2035, TBS Blotto A Blocking Reagent: sc-2333 and Western Blotting Luminol Reagent: sc-2048. 2) Immunoprecipitation: use Protein A/G PLUS-Agarose: sc-2003 (0.5 ml agarose/2.0 ml). 3) Immunofluorescence: use goat anti-rabbit IgG-FITC: sc-2012 (dilution range: 1:100-1:400) or goat anti-rabbit IgG-TR: sc-2780 (dilution range: 1:100-1:400) with UltraCruz[™] Mounting Medium: sc-24941.

DATA



EI24 (H-101): sc-292270. Western blot analysis of EI24 expression in mouse liver tissue extract.

STORAGE

Store at 4° C, ****DO NOT FREEZE****. Stable for one year from the date of shipment. Non-hazardous. No MSDS required.

RESEARCH USE

For research use only, not for use in diagnostic procedures.