

SART-1 (H-300): sc-292462

BACKGROUND

SART-1 (squamous cell carcinoma antigen recognized by T cells), also known as Ara1, HOMS1 or Snu66, is a ubiquitously expressed protein that is involved in mRNA splicing and cell proliferation. The gene encoding SART-1 is posttranscriptionally modified to produce two proteins: SART-1(800), which is the native transcript and is localized to the nucleus of proliferating cells, and SART-1(259), which is expressed in the cytosol of epithelial cancers. While both proteins are involved in regulating cell proliferation, SART-1(259) is also an essential component in the spliceosome C assembly pathway playing a role in pre-mRNA splicing. SART-1(259) possesses a tumor-rejection antigen that can induce restricted cytotoxic T lymphocytes in cancer patients, suggesting a possible role in immunotherapy. Additionally, the polymorphic variation within the SART-1 gene may be a cause of atopy, an allergic hypersensitivity characterized by eczema, asthma and allergic conjunctivitis.

CHROMOSOMAL LOCATION

Genetic locus: SART1 (human) mapping to 11q13.1; Sart1 (mouse) mapping to 19 A.

SOURCE

SART-1 (H-300) is a rabbit polyclonal antibody raised against amino acids 107-406 mapping near the N-terminus of SART-1 of human origin.

PRODUCT

Each vial contains 200 µg IgG in 1.0 ml of PBS with < 0.1% sodium azide and 0.1% gelatin.

STORAGE

Store at 4° C, ****DO NOT FREEZE****. Stable for one year from the date of shipment. Non-hazardous. No MSDS required.

APPLICATIONS

SART-1 (H-300) is recommended for detection of SART-1 of mouse, rat and human origin by Western Blotting (starting dilution 1:200, dilution range 1:100-1:1000), immunoprecipitation [1-2 µg per 100-500 µg of total protein (1 ml of cell lysate)], immunofluorescence (starting dilution 1:50, dilution range 1:50-1:500) and solid phase ELISA (starting dilution 1:30, dilution range 1:30-1:3000).

SART-1 (H-300) is also recommended for detection of SART-1 in additional species, including canine.

Suitable for use as control antibody for SART-1 siRNA (h): sc-62978, SART-1 siRNA (m): sc-62979, SART-1 shRNA Plasmid (h): sc-62978-SH, SART-1 shRNA Plasmid (m): sc-62979-SH, SART-1 shRNA (h) Lentiviral Particles: sc-62978-V and SART-1 shRNA (m) Lentiviral Particles: sc-62979-V.

Molecular Weight (predicted) of SART-1: 90 kDa.

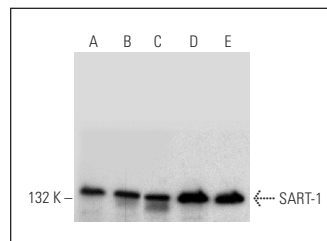
Molecular Weight (observed) of SART-1: 117-132 kDa.

Positive Controls: Jurkat whole cell lysate: sc-2204, HeLa whole cell lysate: sc-2200 or K-562 whole cell lysate: sc-2203.

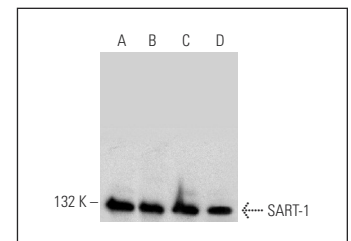
RECOMMENDED SECONDARY REAGENTS

To ensure optimal results, the following support (secondary) reagents are recommended: 1) Western Blotting: use goat anti-rabbit IgG-HRP: sc-2004 (dilution range: 1:2000-1:100,000) or Cruz Marker™ compatible goat anti-rabbit IgG-HRP: sc-2030 (dilution range: 1:2000-1:5000), Cruz Marker™ Molecular Weight Standards: sc-2035, TBS Blotto A Blocking Reagent: sc-2333 and Western Blotting Luminol Reagent: sc-2048. 2) Immunoprecipitation: use Protein A/G PLUS-Agarose: sc-2003 (0.5 ml agarose/2.0 ml). 3) Immunofluorescence: use goat anti-rabbit IgG-FITC: sc-2012 (dilution range: 1:100-1:400) or goat anti-rabbit IgG-TR: sc-2780 (dilution range: 1:100-1:400) with UltraCruz™ Mounting Medium: sc-24941.

DATA



SART-1 (H-300): sc-292462. Western blot analysis of SART-1 expression in Jurkat (A), HeLa (B), NCI-H1299 (C), MOLT-4 (D) and Raji (E) whole cell lysates.



SART-1 (H-300): sc-292462. Western blot analysis of SART-1 expression in K-562 (A), NIH/3T3 (B), Ramos (C) and A549 (D) whole cell lysates.

RESEARCH USE

For research use only, not for use in diagnostic procedures.

PROTOCOLS

See our web site at www.scbt.com or our catalog for detailed protocols and support products.

MONOS
Satisfaction
Guaranteed

Try **SART-1 (A-5): sc-376460** or **SART-1 (E-2): sc-376307**, our highly recommended monoclonal alternatives to SART-1 (H-300).