

EBP1 (H-300): sc-292466

BACKGROUND

EBP1 (ErbB3-binding protein 1), also known as PA2G4 (proliferation-associated 2G4), p38-2G4 or HG4-1, is a member of the peptidase M24C family and functions as an RNA-binding protein involved in cellular proliferation and differentiation processes. It is expressed in a variety of cell lines, including a wide range of tumor cell lines, and localizes to the cytoplasm. Upon treatment with Neuregulin-1 (heregulin), EBP1 translocates to the nucleus. EBP1 is a component of pre-ribosomal ribonucleoprotein complexes, participating in ribosome assembly and regulating the later steps of rRNA processing. In addition, EBP1 interacts with ErbB-3 and may function as a modulator of the ErbB-3-mediated signal transduction pathway by regulating the effects of Neuregulin-1 (heregulin). EBP1 also associates with histone deacetylases (HDACs), functioning as a transcriptional co-repressor of cell cycle regulatory genes.

CHROMOSOMAL LOCATION

Genetic locus: PA2G4 (human) mapping to 12q13.2; Pa2g4 (mouse) mapping to 10 D3.

SOURCE

EBP1 (H-300) is a rabbit polyclonal antibody raised against amino acids 1-300 mapping at the N-terminus of EBP1 of human origin.

PRODUCT

Each vial contains 200 µg IgG in 1.0 ml of PBS with < 0.1% sodium azide and 0.1% gelatin.

STORAGE

Store at 4° C, ****DO NOT FREEZE****. Stable for one year from the date of shipment. Non-hazardous. No MSDS required.

APPLICATIONS

EBP1 (H-300) is recommended for detection of EBP1 of mouse, rat and human origin by Western Blotting (starting dilution 1:200, dilution range 1:100-1:1000), immunoprecipitation [1-2 µg per 100-500 µg of total protein (1 ml of cell lysate)], immunofluorescence (starting dilution 1:50, dilution range 1:50-1:500), immunohistochemistry (including paraffin-embedded sections) (starting dilution 1:50, dilution range 1:50-1:500) and solid phase ELISA (starting dilution 1:30, dilution range 1:30-1:3000).

EBP1 (H-300) is also recommended for detection of EBP1 in additional species, including equine, canine and bovine.

Suitable for use as control antibody for EBP1 siRNA (h): sc-77220, EBP1 siRNA (m): sc-77221, EBP1 shRNA Plasmid (h): sc-77220-SH, EBP1 shRNA Plasmid (m): sc-77221-SH, EBP1 shRNA (h) Lentiviral Particles: sc-77220-V and EBP1 shRNA (m) Lentiviral Particles: sc-77221-V.

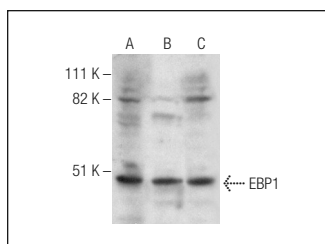
Molecular Weight of EBP1: 47 kDa.

Positive Controls: K-562 whole cell lysate: sc-2203, Jurkat whole cell lysate: sc-2204 or T-47D cell lysate: sc-2293.

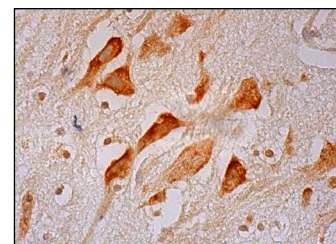
RECOMMENDED SECONDARY REAGENTS

To ensure optimal results, the following support (secondary) reagents are recommended: 1) Western Blotting: use goat anti-rabbit IgG-HRP: sc-2004 (dilution range: 1:2000-1:100,000) or Cruz Marker™ compatible goat anti-rabbit IgG-HRP: sc-2030 (dilution range: 1:2000-1:5000), Cruz Marker™ Molecular Weight Standards: sc-2035, TBS Blotto A Blocking Reagent: sc-2333 and Western Blotting Luminol Reagent: sc-2048. 2) Immunoprecipitation: use Protein A/G PLUS-Agarose: sc-2003 (0.5 ml agarose/2.0 ml). 3) Immunofluorescence: use goat anti-rabbit IgG-FITC: sc-2012 (dilution range: 1:100-1:400) or goat anti-rabbit IgG-TR: sc-2780 (dilution range: 1:100-1:400) with UltraCruz™ Mounting Medium: sc-24941. 4) Immunohistochemistry: use ImmunoCruz™: sc-2051 or ABC: sc-2018 rabbit IgG Staining Systems.

DATA



EBP1 (H-300): sc-292466. Western blot analysis of EBP1 expression in K-562 (A), T-47D (B) and Jurkat (C) whole cell lysates.



EBP1 (H-300): sc-292466. Immunoperoxidase staining of formalin fixed, paraffin-embedded human hippocampus tissue showing cytoplasmic and nuclear staining of neuronal cells and nuclear staining of glial cells.

RESEARCH USE

For research use only, not for use in diagnostic procedures.

PROTOCOLS

See our web site at www.scbt.com or our catalog for detailed protocols and support products.


 MONOS
Satisfaction
Guaranteed

Try **EBP1 (C-11): sc-393114**, our highly recommended monoclonal alternative to EBP1 (H-300).