

CRHSP-24 (H-36): sc-292566

BACKGROUND

CRHSP-24 (calcium-regulated heat-stable protein 24) is a serine phosphoprotein originally identified as a physiological substrate for the Ca^{2+} -calmodulin regulated protein phosphatase calcineurin (PP2B). An ubiquitously expressed protein, CRHSP-24 interacts with the STYX/dead phosphate protein in developing spermatids and is a paralog of the brain-specific mRNA-binding protein PIPPIN. It is thought to play a common role in calcium-mediated signal transduction resulting from phosphorylation on serine residues. CRHSP-24 is phosphorylated on Ser 52 by Akt-1 (PKB α) in response to IGF-1, on Ser 52 by Akt-1 and RSK in response to EGF, and on Ser 41 in the absence of IGF-1/EGF by a DYRK isoform or another proline-directed protein kinase.

REFERENCES

1. Burnham, D.B., et al. 1982. Effects of carbachol, cholecystokinin, and Insulin on protein phosphorylation in isolated pancreatic acini. *J. Biol. Chem.* 257: 10523-10528.
2. Goblewski, G.E., et al. 1998. Purification and characterization of a novel physiological substrate for calcineurin in mammalian cells. *J. Biol. Chem.* 273: 22738-22744.
3. Williams, J.A., et al. 1999. Intracellular regulatory mechanisms in pancreatic acinar cellular function. *Curr. Opin. Gastroenterol.* 15: 385.
4. Williams, J.A., et al. 2001. Intracellular signaling mechanisms activated by cholecystokinin-regulating synthesis and secretion of digestive enzymes in pancreatic acinar cells. *Annu. Rev. Physiol.* 63: 77-97.
5. Wishart, M.J. and Dixon, J.E. 2002. PTEN and myotubularin phosphatases: from 3-phosphoinositide dephosphorylation to disease. *Trends Cell Biol.* 12: 579-585.
6. Schäfer, C., et al. 2003. CRHSP-24 phosphorylation is regulated by multiple signaling pathways in acinar cells. *Am. J. Physiol. Gastrointest. Liver Physiol.* 285: 726-734.
7. Sans, M.D., et al. 2004. Calcineurin is required for translational control of protein synthesis in rat pancreatic acini. *Am. J. Physiol., Cell Physiol.* 287: C310-C319.
8. Tashiro, M., et al. 2004. Calcineurin mediates pancreatic growth in protease inhibitor-treated mice. *Am. J. Physiol. Gastrointest. Liver Physiol.* 286: G784-G790.

CHROMOSOMAL LOCATION

Genetic locus: CARHSP1 (human) mapping to 16p13.2; Carhsp1 (mouse) mapping to 16 A1.

SOURCE

CRHSP-24 (H-36) is a rabbit polyclonal antibody raised against amino acids 10-45 mapping near the N-terminus of CRHSP-24 of human origin.

PRODUCT

Each vial contains 200 μ g IgG in 1.0 ml of PBS with < 0.1% sodium azide and 0.1% gelatin.

APPLICATIONS

CRHSP-24 (H-36) is recommended for detection of CRHSP-24 of mouse, rat and human origin by Western Blotting (starting dilution 1:200, dilution range 1:100-1:1000), immunoprecipitation [1-2 μ g per 100-500 μ g of total protein (1 ml of cell lysate)], immunofluorescence (starting dilution 1:50, dilution range 1:50-1:500) and solid phase ELISA (starting dilution 1:30, dilution range 1:30-1:3000).

Suitable for use as control antibody for CRHSP-24 siRNA (h): sc-60443, CRHSP-24 siRNA (m): sc-60444, CRHSP-24 shRNA Plasmid (h): sc-60443-SH, CRHSP-24 shRNA Plasmid (m): sc-60444-SH, CRHSP-24 shRNA (h) Lentiviral Particles: sc-60443-V and CRHSP-24 shRNA (m) Lentiviral Particles: sc-60444-V.

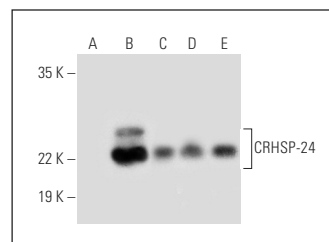
Molecular Weight of CRHSP-24: 24 kDa.

Positive Controls: CRHSP-24 (h3): 293T Lysate: sc-111688, HeLa whole cell lysate: sc-2200 or Jurkat whole cell lysate: sc-2204.

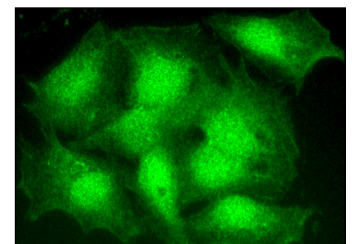
RECOMMENDED SECONDARY REAGENTS

To ensure optimal results, the following support (secondary) reagents are recommended: 1) Western Blotting: use goat anti-rabbit IgG-HRP: sc-2004 (dilution range: 1:2000-1:100,000) or Cruz Marker™ compatible goat anti-rabbit IgG-HRP: sc-2030 (dilution range: 1:2000-1:5000), Cruz Marker™ Molecular Weight Standards: sc-2035, TBS Blotto A Blocking Reagent: sc-2333 and Western Blotting Luminol Reagent: sc-2048. 2) Immunoprecipitation: use Protein A/G PLUS-Agarose: sc-2003 (0.5 ml agarose/2.0 ml). 3) Immunofluorescence: use goat anti-rabbit IgG-FITC: sc-2012 (dilution range: 1:100-1:400) or goat anti-rabbit IgG-TR: sc-2780 (dilution range: 1:100-1:400) with UltraCruz™ Mounting Medium: sc-24941.

DATA



CRHSP-24 (H-36): sc-292566. Western blot analysis of CRHSP-24 expression in non-transfected 293T: sc-117752 (A), human CRHSP-24 transfected 293T: sc-111688 (B), HeLa (C), Hep G2 (D) and Jurkat (E) whole cell lysates.



CRHSP-24 (H-36): sc-292566. Immunofluorescence staining of formalin-fixed HepG2 cells showing nuclear and cytoplasmic localization.

STORAGE

Store at 4° C, **DO NOT FREEZE**. Stable for one year from the date of shipment. Non-hazardous. No MSDS required.

RESEARCH USE

For research use only, not for use in diagnostic procedures.