

# CALM (H-134): sc-292597

## BACKGROUND

Clathrin-coated pits and vesicles are assembled for receptor-mediated endocytosis through interaction with Clathrin associated protein complexes. Vesicle transport is mediated from the *trans*-Golgi network by the adapter complex AP-1 and from the plasma membrane by the AP-2 complex. The AP-1 and AP-2 adapter protein complexes consist of Clathrin binding Adaptin proteins ( $\gamma$  and  $\beta$ 1 for AP-1,  $\alpha$  and  $\beta$ 2 for AP-2) and two smaller subunits known as AP50 and AP17. The  $\alpha$ - and  $\beta$ -Adaptin chains have a similar two-domain organization with C-terminal domains that vary in both sequence and length.  $\alpha$ -Adaptin splice variants A and C display variable relative expression levels and differential distribution in different tissues. AP180 (also designated AP-3 or F1-20) is a synapse-specific Clathrin assembly protein. The protein CALM (Clathrin assembly protein lymphoid Myeloid leukemia) is highly homologous to AP180 and may also be involved in Clathrin assembly.

## REFERENCES

1. Robinson, M.S. 1989. Cloning of cDNAs encoding two related 100 kD coated vesicle proteins ( $\alpha$ -Adaptins). *J. Cell Biol.* 108: 833-842.
2. Kirchhausen, T., et al. 1989. Structural and functional division into two domains of the large (100 to 115 kDa) chains of the Clathrin-associated protein complex AP-2. *Proc. Natl. Acad. Sci. USA* 86: 2612-2616.

## CHROMOSOMAL LOCATION

Genetic locus: PICALM (human) mapping to 11q14.2; Picalm (mouse) mapping to 7 E1.

## SOURCE

CALM (H-134) is a rabbit polyclonal antibody raised against amino acids 287-420 mapping within an internal region of CALM of human origin.

## PRODUCT

Each vial contains 200  $\mu$ g IgG in 1.0 ml of PBS with < 0.1% sodium azide and 0.1% gelatin.

## APPLICATIONS

CALM (H-134) is recommended for detection of CALM of mouse, rat and human origin by Western Blotting (starting dilution 1:200, dilution range 1:100-1:1000), immunoprecipitation [1-2  $\mu$ g per 100-500  $\mu$ g of total protein (1 ml of cell lysate)], immunofluorescence (starting dilution 1:50, dilution range 1:50-1:500) and solid phase ELISA (starting dilution 1:30, dilution range 1:30-1:3000). CALM (H-134) is also recommended for detection of CALM in additional species, including equine, canine, bovine, porcine and avian.

Suitable for use as control antibody for CALM siRNA (h): sc-29882, CALM siRNA (m): sc-29883, CALM shRNA Plasmid (h): sc-29882-SH, CALM shRNA Plasmid (m): sc-29883-SH, CALM shRNA (h) Lentiviral Particles: sc-29882-V and CALM shRNA (m) Lentiviral Particles: sc-29883-V.

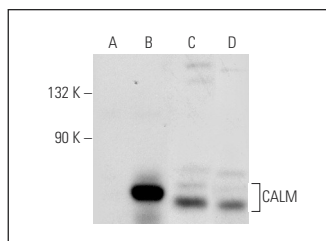
Molecular Weight of CALM: 62-72 kDa.

Positive Controls: CALM (h): 293T Lysate: sc-111583, NIH/3T3 whole cell lysate: sc-2210 or KNRK whole cell lysate: sc-2214.

## RECOMMENDED SECONDARY REAGENTS

To ensure optimal results, the following support (secondary) reagents are recommended: 1) Western Blotting: use goat anti-rabbit IgG-HRP: sc-2004 (dilution range: 1:2000-1:100,000) or Cruz Marker™ compatible goat anti-rabbit IgG-HRP: sc-2030 (dilution range: 1:2000-1:5000), Cruz Marker™ Molecular Weight Standards: sc-2035, TBS Blotto A Blocking Reagent: sc-2333 and Western Blotting Luminol Reagent: sc-2048. 2) Immunoprecipitation: use Protein A/G PLUS-Agarose: sc-2003 (0.5 ml agarose/2.0 ml). 3) Immunofluorescence: use goat anti-rabbit IgG-FITC: sc-2012 (dilution range: 1:100-1:400) or goat anti-rabbit IgG-TR: sc-2780 (dilution range: 1:100-1:400) with UltraCruz™ Mounting Medium: sc-24941.

## DATA



CALM (H-134): sc-292597. Western blot analysis of CALM expression in non-transfected 293T: sc-117752 (A), human CALM transfected 293T: sc-111583 (B), KNRK (C) and NIH/3T3 (D) whole cell lysates.

## STORAGE

Store at 4° C, \*\*DO NOT FREEZE\*\*. Stable for one year from the date of shipment. Non-hazardous. No MSDS required.

## RESEARCH USE

For research use only, not for use in diagnostic procedures.

## PROTOCOLS

See our web site at [www.scbt.com](http://www.scbt.com) or our catalog for detailed protocols and support products.

**MONOS**  
Satisfaction  
Guaranteed

Try **CALM (A-2): sc-271224** or **CALM (D-8): sc-166522**, our highly recommended monoclonal alternatives to CALM (H-134).