

DICE1 (H-114): sc-292600

BACKGROUND

DICE1 (deleted in cancer 1) is a protein mapping to chromosome 13q14.3, which appears to be a tumor suppressor gene in non-small cell lung carcinoma. Expression of DICE1 is lost or downregulated in most non-small lung carcinomas compared to normal lung tissue. This is most likely due to a loss of heterozygosity (LOH) of chromosome 13, which is prone to deletions and rearrangements in human lung cancers. The DICE1 gene is extremely homologous to the mouse protein, DBI-1, at the carboxy-terminus. DBI-1, when expressed at high levels, interferes with the mitogenic response to IGF-1. Both DICE1 and DBI-1 contain the highly conserved DEAD-box motif, which suggests that these proteins are involved in critical aspects of cellular function and regulation.

REFERENCES

1. Hensel, C.H., et al. 1990. Altered structure and expression of the human retinoblastoma susceptibility gene in small cell lung cancer. *Cancer Res.* 50: 3067-3072.
2. Hoff, H.B., 3rd, et al. 1998. DBI-1, a novel gene related to the notch family, modulates mitogenic responses to Insulin-like growth factor 1. *Exp. Cell Res.* 238: 359-370.

CHROMOSOMAL LOCATION

Genetic locus: INTS6 (human) mapping to 13q14.3; Ints6 (mouse) mapping to 14 D1.

SOURCE

DICE1 (H-114) is a rabbit polyclonal antibody raised against amino acids 713-826 mapping near the C-terminus of DICE1 of human origin.

PRODUCT

Each vial contains 200 µg IgG in 1.0 ml of PBS with < 0.1% sodium azide and 0.1% gelatin.

APPLICATIONS

DICE1 (H-114) is recommended for detection of DICE1 of mouse, rat and human origin by Western Blotting (starting dilution 1:200, dilution range 1:100-1:1000), immunoprecipitation [1-2 µg per 100-500 µg of total protein (1 ml of cell lysate)], immunofluorescence (starting dilution 1:50, dilution range 1:50-1:500) and solid phase ELISA (starting dilution 1:30, dilution range 1:30-1:3000).

DICE1 (H-114) is also recommended for detection of DICE1 in additional species, including equine, bovine and porcine.

Suitable for use as control antibody for DICE1 siRNA (h): sc-45802, DICE1 siRNA (m): sc-45803, DICE1 shRNA Plasmid (h): sc-45802-SH, DICE1 shRNA Plasmid (m): sc-45803-SH, DICE1 shRNA (h) Lentiviral Particles: sc-45802-V and DICE1 shRNA (m) Lentiviral Particles: sc-45803-V.

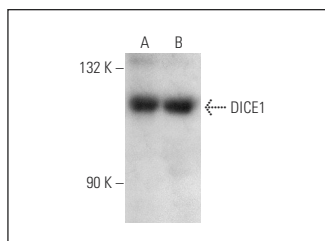
Molecular Weight of DICE1: 100 kDa.

Positive Controls: HeLa nuclear extract: sc-2120 or DU 145 nuclear extract: sc-24960.

RECOMMENDED SECONDARY REAGENTS

To ensure optimal results, the following support (secondary) reagents are recommended: 1) Western Blotting: use goat anti-rabbit IgG-HRP: sc-2004 (dilution range: 1:2000-1:100,000) or Cruz Marker™ compatible goat anti-rabbit IgG-HRP: sc-2030 (dilution range: 1:2000-1:5000), Cruz Marker™ Molecular Weight Standards: sc-2035, TBS Blotto A Blocking Reagent: sc-2333 and Western Blotting Luminol Reagent: sc-2048. 2) Immunoprecipitation: use Protein A/G PLUS-Agarose: sc-2003 (0.5 ml agarose/2.0 ml). 3) Immunofluorescence: use goat anti-rabbit IgG-FITC: sc-2012 (dilution range: 1:100-1:400) or goat anti-rabbit IgG-TR: sc-2780 (dilution range: 1:100-1:400) with UltraCruz™ Mounting Medium: sc-24941.

DATA



DICE1 (H-114): sc-292600. Western blot analysis of DICE1 expression in HeLa (A) and DU 145 (B) nuclear extracts.

STORAGE

Store at 4° C, **DO NOT FREEZE**. Stable for one year from the date of shipment. Non-hazardous. No MSDS required.

RESEARCH USE

For research use only, not for use in diagnostic procedures.

PROTOCOLS

See our web site at www.scbt.com or our catalog for detailed protocols and support products.

MONOS
Satisfaction
Guaranteed

Try **DICE1 (H-6): sc-376524** or **DICE1 (LL7): sc-101232**, our highly recommended monoclonal alternatives to DICE1 (H-114).