

Snurportin-1 (H-300): sc-292892

BACKGROUND

Snurportin-1, also known as SNUPN, KPNBL or RNUT1 (RNA U transporter 1), is a nuclear import adaptor protein belonging to the Snurportin family. Localizing to the cytoplasm and nucleus, Snurportin-1 contains an N-terminal IBB domain and a trimethylguanosine (m3G)-cap binding domain. It specifically binds the terminal 2,2,7-m3G-cap at the 5' end of U snRNPs and functions to transport U snRNPs into the nucleus via an association with Importin β . The nuclear import of U snRNPs is an important step in the maturation of the spliceosome. The complex formed between Snurportin-1, U snRNP and Importin β is essential for nuclear import. Depending on the U snRNP (U1 or U2), Snurportin-1 may localize to Cajal bodies after nuclear import. In the nucleus, CRM1 binds to Snurportin-1 and is responsible for the recycling of Snurportin-1 back to the cytoplasm for additional rounds of U snRNP import.

REFERENCES

- Paraskeva, E., Izaurralde, E., Bischoff, F.R., Huber, J., Kutay, U., Hartmann, E., Lührmann, R. and Gorlich, D. 1999. CRM1-mediated recycling of snurportin 1 to the cytoplasm. *J. Cell Biol.* 145: 255-264.
- Mouaikel, J., Narayanan, U., Verheggen, C., Matera, A.G., Bertrand, E., Tazi, J. and Bordonne, R. 2003. Interaction between the small-nuclear-RNA cap hypermethylase and the spinal muscular atrophy protein, survival of motor neuron. *EMBO Rep.* 4: 616-622.
- Julien, C., Coulombe, P. and Meloche, S. 2003. Nuclear export of ERK3 by a CRM1-dependent mechanism regulates its inhibitory action on cell cycle progression. *J. Biol. Chem.* 278: 42615-42624.
- Mans, B.J., Anantharaman, V., Aravind, L. and Koonin, E.V. 2004. Comparative genomics, evolution and origins of the nuclear envelope and nuclear pore complex. *Cell Cycle* 3: 1612-1637.
- Strasser, A., Dickmanns, A., Schmidt, U., Penka, E., Urlaub, H., Sekine, M., Lührmann, R. and Ficner, R. 2004. Purification, crystallization and preliminary crystallographic data of the m3G cap-binding domain of human snRNP import factor snurportin 1. *Acta Crystallogr. D Biol. Crystallogr.* 60: 1628-1631.

CHROMOSOMAL LOCATION

Genetic locus: SNUPN (human) mapping to 15q24.2; Snupn (mouse) mapping to 9 B.

SOURCE

Snurportin-1 (H-300) is a rabbit polyclonal antibody raised against amino acids 1-300 mapping at the N-terminus of Snurportin-1 of human origin.

PRODUCT

Each vial contains 200 μ g IgG in 1.0 ml of PBS with < 0.1% sodium azide and 0.1% gelatin.

STORAGE

Store at 4° C, ****DO NOT FREEZE****. Stable for one year from the date of shipment. Non-hazardous. No MSDS required.

APPLICATIONS

Snurportin-1 (H-300) is recommended for detection of Snurportin-1 of mouse, rat and human origin by Western Blotting (starting dilution 1:200, dilution range 1:100-1:1000), immunoprecipitation [1-2 μ g per 100-500 μ g of total protein (1 ml of cell lysate)], immunofluorescence (starting dilution 1:50, dilution range 1:50-1:500) and solid phase ELISA (starting dilution 1:30, dilution range 1:30-1:3000).

Snurportin-1 (H-300) is also recommended for detection of Snurportin-1 in additional species, including canine, bovine and porcine.

Suitable for use as control antibody for Snurportin-1 siRNA (h): sc-63048, Snurportin-1 siRNA (m): sc-63049, Snurportin-1 shRNA Plasmid (h): sc-63048-SH, Snurportin-1 shRNA Plasmid (m): sc-63049-SH, Snurportin-1 shRNA (h) Lentiviral Particles: sc-63048-V and Snurportin-1 shRNA (m) Lentiviral Particles: sc-63049-V.

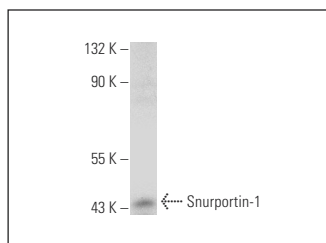
Molecular Weight of Snurportin-1: 46 kDa.

Positive Controls: KNRK whole cell lysate: sc-2214.

RECOMMENDED SECONDARY REAGENTS

To ensure optimal results, the following support (secondary) reagents are recommended: 1) Western Blotting: use goat anti-rabbit IgG-HRP: sc-2004 (dilution range: 1:2000-1:100,000) or Cruz Marker™ compatible goat anti-rabbit IgG-HRP: sc-2030 (dilution range: 1:2000-1:5000), Cruz Marker™ Molecular Weight Standards: sc-2035, TBS Blotto A Blocking Reagent: sc-2333 and Western Blotting Luminol Reagent: sc-2048. 2) Immunoprecipitation: use Protein A/G PLUS-Agarose: sc-2003 (0.5 ml agarose/2.0 ml). 3) Immunofluorescence: use goat anti-rabbit IgG-FITC: sc-2012 (dilution range: 1:100-1:400) or goat anti-rabbit IgG-TR: sc-2780 (dilution range: 1:100-1:400) with UltraCruz™ Mounting Medium: sc-24941.

DATA



Snurportin-1 (H-300): sc-292892. Western blot analysis of Snurportin-1 expression in KNRK whole cell lysate.

RESEARCH USE

For research use only, not for use in diagnostic procedures.

PROTOCOLS

See our web site at www.scbt.com or our catalog for detailed protocols and support products.