

# BATF2 (1B11): sc-293274

## BACKGROUND

BATF2 (basic leucine zipper transcription factor, ATF-like 2) is a 274 amino acid protein that localizes to the nucleus and contains one bZIP domain, suggesting that it may be involved in transcriptional regulation. The gene encoding BATF2, which is expressed as multiple alternatively spliced isoforms, is located on human chromosome 11. With approximately 135 million base pairs and 1,400 genes, chromosome 11 comprises approximately 4% of human genomic DNA and is considered a gene and disease association dense chromosome. The chromosome 11 encoded *Atm* gene is important for regulation of cell cycle arrest and apoptosis following double strand DNA breaks. *Atm* mutation leads to the disorder known as ataxia-telangiectasia. The blood disorders Sickle cell anemia and thalassemia are caused by HBB gene mutations, while Wilms' tumors, WAGR syndrome and Denys-Drash syndrome are associated with mutations of the *WT1* gene. Jervell and Lange-Nielsen syndrome, Jacobsen syndrome, Niemann-Pick disease, hereditary angioedema and Smith-Lemli-Opitz syndrome are also associated with defects in chromosome 11-encoded genes.

## REFERENCES

1. Polyak, K., et al. 1997. A model for p53-induced apoptosis. *Nature* 389: 300-305.
2. Katoh, M. and Katoh, M. 2004. Identification and characterization of human TP53I5 and mouse Tp53i5 genes in silico. *Int. J. Oncol.* 25: 225-230.
3. Grossfeld, P.D., et al. 2004. The 11q terminal deletion disorder: a prospective study of 110 cases. *Am. J. Med. Genet. A* 129A: 51-61.
4. Loussouarn, G., et al. 2006. KCNQ1 K<sup>+</sup> channel-mediated cardiac channelopathies. *Methods Mol. Biol.* 337: 167-183.
5. Taylor, T.D., et al. 2006. Human chromosome 11 DNA sequence and analysis including novel gene identification. *Nature* 440: 497-500.
6. Zehelein, J., et al. 2006. Skipping of exon 1 in the KCNQ1 gene causes Jervell and Lange-Nielsen syndrome. *J. Biol. Chem.* 281: 35397-35403.
7. Ataga, K.I., et al. 2007.  $\beta$ -thalassaemia and sickle cell anaemia as paradigms of hypercoagulability. *Br. J. Haematol.* 139: 3-13.
8. Berger, A.C., et al. 2007. The subcellular localization of the Niemann-Pick type C proteins depends on the adaptor complex AP-3. *J. Cell Sci.* 120: 3640-3652.

## CHROMOSOMAL LOCATION

Genetic locus: BATF2 (human) mapping to 11q13.1.

## SOURCE

BATF2 (1B11) is a mouse monoclonal antibody raised against amino acids 1-189 representing full length BATF2 of human origin.

## PRODUCT

Each vial contains 100  $\mu$ g IgG<sub>2b</sub> kappa light chain in 1.0 ml of PBS with < 0.1% sodium azide and 0.1% gelatin.

## APPLICATIONS

BATF2 (1B11) is recommended for detection of BATF2 of human origin by Western Blotting (starting dilution 1:200, dilution range 1:100-1:1000), immunoprecipitation [1-2  $\mu$ g per 100-500  $\mu$ g of total protein (1 ml of cell lysate)], immunofluorescence (starting dilution 1:50, dilution range 1:50-1:500), immunohistochemistry (including paraffin-embedded sections) (starting dilution 1:50, dilution range 1:50-1:500) and solid phase ELISA (starting dilution 1:30, dilution range 1:30-1:3000).

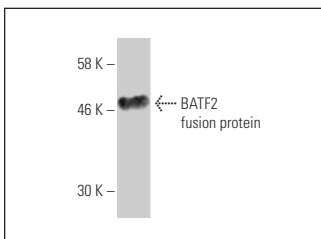
Suitable for use as control antibody for BATF2 siRNA (h): sc-97016, BATF2 shRNA Plasmid (h): sc-97016-SH and BATF2 shRNA (h) Lentiviral Particles: sc-97016-V.

Molecular Weight of BATF2 isoforms: 29/20 kDa.

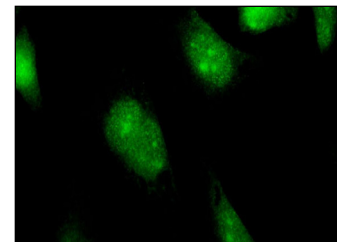
## RECOMMENDED SUPPORT REAGENTS

To ensure optimal results, the following support reagents are recommended: 1) Western Blotting: use m-IgG $\kappa$  BP-HRP: sc-516102 or m-IgG $\kappa$  BP-HRP (Cruz Marker): sc-516102-CM (dilution range: 1:1000-1:10000), Cruz Marker™ Molecular Weight Standards: sc-2035, UltraCruz® Blocking Reagent: sc-516214 and Western Blotting Luminol Reagent: sc-2048. 2) Immunoprecipitation: use Protein A/G PLUS-Agarose: sc-2003 (0.5 ml agarose/2.0 ml). 3) Immunofluorescence: use m-IgG $\kappa$  BP-FITC: sc-516140 or m-IgG $\kappa$  BP-PE: sc-516141 (dilution range: 1:50-1:200) with UltraCruz® Mounting Medium: sc-24941 or UltraCruz® Hard-set Mounting Medium: sc-359850. 4) Immunohistochemistry: use m-IgG $\kappa$  BP-HRP: sc-516102 with DAB, 50X: sc-24982 and Immunohistomount: sc-45086, or Organo/Limonene Mount: sc-45087.

## DATA



BATF2 (1B11): sc-293274. Western blot analysis of human recombinant BATF2 fusion protein.



BATF2 (1B11): sc-293274. Immunofluorescence staining of methanol-fixed HeLa cells showing nuclear localization.

## STORAGE

Store at 4° C, \*\*DO NOT FREEZE\*\*. Stable for one year from the date of shipment. Non-hazardous. No MSDS required.

## RESEARCH USE

For research use only, not for use in diagnostic procedures.

## PROTOCOLS

See our web site at [www.scbt.com](http://www.scbt.com) for detailed protocols and support products.