

GLP-2R (1F2): sc-293310

BACKGROUND

Glucagon, a pancreatic hormone, functions as an antagonist to Insulin, stimulating the conversion of glycogen to glucose and increasing blood sugar levels. GLP-1 functions as a transmitter in the central nervous system, inhibiting feeding and drinking behavior. Both Glucagon and GLP-1 function through their specific binding to the Glucagon Receptor or GLP-1R, respectively. The Glucagon Receptor is expressed in liver, kidney and adipose tissue. The GLP-1R expression primarily localizes to areas of the hypothalamus involved in feeding behavior. Both receptors and their ligands serve as potential targets for the therapeutic treatment of diabetes. Glucagon-like peptide 2 receptor, also designated GLP-2 receptor or GLP-2R, acts as a receptor for Glucagon-like peptide 2 (GLP-2). GLP-2 is a nutrient-responsive hormone that has various functions in the gastrointestinal tract. The activity of GLP-2R, which is a multi-pass membrane protein, is mediated by G proteins which activate adenylyl cyclase.

REFERENCES

- Munroe, D.G., Gupta, A.K., Kooshesh, F., Vyas, T.B., Rizkalla, G., Wang, H., Demchyshyn, L., Yang, Z.J., Kamboj, R.K., Chen, H., McCallum, K., Summer-Smith, M., Drucker, D.J. and Crivici, A. 1999. Prototypic G protein-coupled receptor for the intestinotrophic factor Glucagon-like peptide 2. *Proc. Natl. Acad. Sci. USA* 96: 1569-1573.
- Estell, J.L., Koehler, J.A., Yusta, B. and Drucker, D.J. 2005. The Glucagon-like peptide-2 receptor C terminus modulates β -arrestin-2 association but is dispensable for ligand-induced desensitization, endocytosis, and G protein-dependent effector activation. *J. Biol. Chem.* 280: 22124-22134.
- Koehler, J.A., Yusta, B. and Drucker, D.J. 2005. The HeLa cell glucagon-like peptide-2 receptor is coupled to regulation of apoptosis and ERK1/2 activation through divergent signaling pathways. *Mol. Endocrinol.* 19: 459-473.
- Estell, J.L. and Drucker, D.J. 2006. Glucagon and Glucagon-like peptide receptors as drug targets. *Curr. Pharm. Des.* 12: 1731-1750.
- Sams, A., Hastrup, S., Andersen, M. and Thim, L. 2006. Naturally occurring Glucagon-like peptide cell lines. *Eur. J. Pharmacol.* 532: 18-23.
- Guan, X., Karpen, H.E., Stephens, J., Bukowski, J.T., Niu, S., Zhang, G., Stoll, B., Finegold, M.J., Holst, J.J., Hadsell, D., Hadsell, D.L., Nichols, B.L. and Burrin, D.G. 2006. GLP-2 receptor localizes to enteric neurons and endocrine cells expressing vasoactive peptides and mediates increased blood flow. *Gastroenterology* 130: 150-164.

CHROMOSOMAL LOCATION

Genetic locus: GLP2R (human) mapping to 17p13.1.

SOURCE

GLP-2R (1F2) is a mouse monoclonal antibody raised against amino acids 69-178 of GLP-2R of human origin.

PRODUCT

Each vial contains 100 μ g IgG_{2b} kappa light chain in 1.0 ml of PBS with < 0.1% sodium azide and 0.1% gelatin.

APPLICATIONS

GLP-2R (1F2) is recommended for detection of GLP-2R of human origin by Western Blotting (starting dilution 1:200, dilution range 1:100-1:1000), immunoprecipitation [1-2 μ g per 100-500 μ g of total protein (1 ml of cell lysate)] and solid phase ELISA (starting dilution 1:30, dilution range 1:30-1:3000).

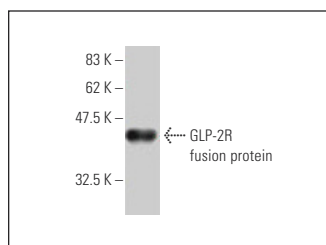
Suitable for use as control antibody for GLP-2R siRNA (h): sc-60695, GLP-2R shRNA Plasmid (h): sc-60695-SH and GLP-2R shRNA (h) Lentiviral Particles: sc-60695-V.

Molecular Weight of GLP-2R: 72 kDa.

RECOMMENDED SUPPORT REAGENTS

To ensure optimal results, the following support reagents are recommended: 1) Western Blotting: use m-IgG κ BP-HRP: sc-516102 or m-IgG κ BP-HRP (Cruz Marker): sc-516102-CM (dilution range: 1:1000-1:10000), Cruz Marker[™] Molecular Weight Standards: sc-2035, UltraCruz[®] Blocking Reagent: sc-516214 and Western Blotting Luminol Reagent: sc-2048. 2) Immunoprecipitation: use Protein A/G PLUS-Agarose: sc-2003 (0.5 ml agarose/2.0 ml).

DATA



GLP-2R (1F2): sc-293310. Western blot analysis of human recombinant GLP-2R fusion protein.

STORAGE

Store at 4° C, ****DO NOT FREEZE****. Stable for one year from the date of shipment. Non-hazardous. No MSDS required.

RESEARCH USE

For research use only, not for use in diagnostic procedures.

PROTOCOLS

See our web site at www.scbt.com for detailed protocols and support products.