

USPL1 (2F12): sc-293331

BACKGROUND

USPL1 (ubiquitin specific peptidase like 1) is a 1,092 amino acid protein that exists as multiple alternatively spliced isoforms and is encoded by a gene which maps to human chromosome 13. Comprising nearly 4% of the human genome, chromosome 13 contains around 114 million base pairs and encodes over 400 genes. Chromosome 13 houses key tumor suppressor genes, including BRCA2 and RB1, which are associated with breast cancer susceptibility and retinoblastoma, respectively. Trisomy 13, also known as Patau syndrome, is deadly and the few who survive past one year suffer from permanent neurologic defects, difficulty eating and vulnerability to serious respiratory infections.

REFERENCES

1. Dunham, A., et al. 2004. The DNA sequence and analysis of human chromosome 13. *Nature* 428: 522-528.
2. O'Reilly, M.K., et al. 2006. *In vitro* evidence for the dual function of Alg2 and Alg11: essential mannosyltransferases in N-linked glycoprotein biosynthesis. *Biochemistry* 45: 9593-9603.
3. Rohozinski, J., et al. 2006. UTP14c is a recently acquired retrogene associated with spermatogenesis and fertility in man. *Biol. Reprod.* 74: 644-651.
4. Bugge, M., et al. 2007. Non-disjunction of chromosome 13. *Hum. Mol. Genet.* 16: 2004-2010.
5. Hall, H.E., et al. 2007. The origin of trisomy 13. *Am. J. Med. Genet. A* 143A: 2242-2248.
6. Hassler, M., et al. 2007. Crystal structure of the retinoblastoma protein N domain provides insight into tumor suppression, ligand interaction and holoprotein architecture. *Mol. Cell* 28: 371-385.

CHROMOSOMAL LOCATION

Genetic locus: USPL1 (human) mapping to 13q12.3.

SOURCE

USPL1 (2F12) is a mouse monoclonal antibody raised against amino acids 975-1074 of USPL1 of human origin.

PRODUCT

Each vial contains 100 µg IgG_{2a} kappa light chain in 1.0 ml of PBS with < 0.1% sodium azide and 0.1% gelatin.

APPLICATIONS

USPL1 (2F12) is recommended for detection of USPL1 of human origin by Western Blotting (starting dilution 1:200, dilution range 1:100-1:1000), immunoprecipitation [1-2 µg per 100-500 µg of total protein (1 ml of cell lysate)] and solid phase ELISA (starting dilution 1:30, dilution range 1:30-1:3000).

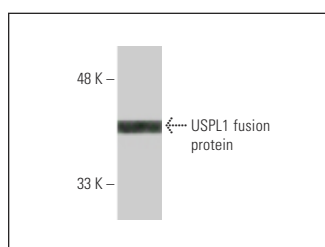
Suitable for use as control antibody for USPL1 siRNA (h): sc-76875, USPL1 shRNA Plasmid (h): sc-76875-SH and USPL1 shRNA (h) Lentiviral Particles: sc-76875-V.

Molecular Weight of USPL1: 120 kDa.

RECOMMENDED SUPPORT REAGENTS

To ensure optimal results, the following support reagents are recommended: 1) Western Blotting: use m-IgGκ BP-HRP: sc-516102 or m-IgGκ BP-HRP (Cruz Marker): sc-516102-CM (dilution range: 1:1000-1:10000), Cruz Marker™ Molecular Weight Standards: sc-2035, UltraCruz® Blocking Reagent: sc-516214 and Western Blotting Luminol Reagent: sc-2048. 2) Immunoprecipitation: use Protein A/G PLUS-Agarose: sc-2003 (0.5 ml agarose/2.0 ml).

DATA



USPL1 (2F12): sc-293331. Western blot analysis of human recombinant USPL1 fusion protein.

STORAGE

Store at 4° C, ****DO NOT FREEZE****. Stable for one year from the date of shipment. Non-hazardous. No MSDS required.

RESEARCH USE

For research use only, not for use in diagnostic procedures.

PROTOCOLS

See our web site at www.scbt.com for detailed protocols and support products.