

PDE8A (1H6): sc-293342

BACKGROUND

Phosphodiesterases (PDEs) are important for the downregulation of the intracellular level of the second messenger cyclic adenosine monophosphate (cAMP) by hydrolyzing cAMP to 5'AMP. Human cyclic GMP-stimulated 3',5'-cyclic nucleotide phosphodiesterase (PDE2A) is expressed in cerebellum, neocortex, heart, kidney, placenta, lung, pulmonary artery, skeletal muscle and pancreas. PDE2A expression is detected in venous and capillary endothelial cells in cardiac and renal tissue. PDE8A is a high affinity cAMP-specific protein that is expressed in a wide variety of tissues including testis, ovary, small intestine, and colon. PDE8B is expressed specifically and abundantly in the thyroid gland and shares 65% sequence identity (83% similarity) with PDE8A.

REFERENCES

- Rosman, G.J., et al. 1997. Isolation and characterization of human cDNAs encoding a cGMP-stimulated 3',5'-cyclic nucleotide phosphodiesterase. *Gene* 191: 89-95.
- Fisher, D.A., et al. 1998. Isolation and characterization of PDE8A, a novel human cAMP-specific phosphodiesterase. *Biochem. Biophys. Res. Commun.* 246: 570-577.
- Gantner, F., et al. 1998. Phosphodiesterase profile of human B lymphocytes from normal and atopic donors and the effects of PDE inhibition on B cell proliferation. *Br. J. Pharmacol.* 123: 1031-1038.
- Cheung, P.P., et al. 1998. Partial characterization of the active site human platelet cAMP phosphodiesterase, PDE3A, by site-directed mutagenesis. *Arch. Biochem. Biophys.* 360: 99-104.
- Hayashi, M., et al. 1998. Molecular cloning and characterization of human PDE8B, a novel thyroid-specific isozyme of 3',5'-cyclic nucleotide phosphodiesterase. *Biochem. Biophys. Res. Commun.* 250: 751-756.
- Sadhu, K., et al. 1999. Differential expression of the cyclic GMP-stimulated phosphodiesterase PDE2A in human venous and capillary endothelial cells. *J. Histochem. Cytochem.* 47: 895-906.
- Hetman, J.M., et al. 2000. Cloning and characterization of PDE7B, a cAMP-specific phosphodiesterase. *Proc. Natl. Acad. Sci. USA* 97: 472-476.

CHROMOSOMAL LOCATION

Genetic locus: PDE8A (human) mapping to 15q25.3.

SOURCE

PDE8A (1H6) is a mouse monoclonal antibody raised against amino acids 32-121 of PDE8A of human origin.

PRODUCT

Each vial contains 100 µg IgG_{2a} kappa light chain in 1.0 ml of PBS with < 0.1% sodium azide and 0.1% gelatin.

STORAGE

Store at 4° C, ****DO NOT FREEZE****. Stable for one year from the date of shipment. Non-hazardous. No MSDS required.

APPLICATIONS

PDE8A (1H6) is recommended for detection of PDE8A of human origin by Western Blotting (starting dilution 1:200, dilution range 1:100-1:1000), immunoprecipitation [1-2 µg per 100-500 µg of total protein (1 ml of cell lysate)] and solid phase ELISA (starting dilution 1:30, dilution range 1:30-1:3000).

Suitable for use as control antibody for PDE8A siRNA (h): sc-41617, PDE8A shRNA Plasmid (h): sc-41617-SH and PDE8A shRNA (h) Lentiviral Particles: sc-41617-V.

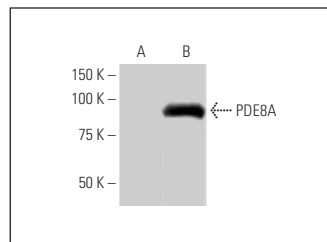
Molecular Weight of PDE8A: 85/90 kDa.

Positive Control: PDE8A transfected 293T whole cell lysate.

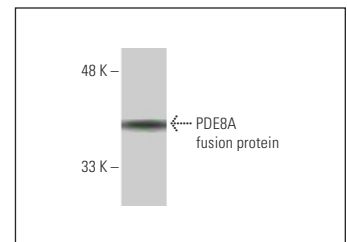
RECOMMENDED SUPPORT REAGENTS

To ensure optimal results, the following support reagents are recommended: 1) Western Blotting: use m-IgGκ BP-HRP: sc-516102 or m-IgGκ BP-HRP (Cruz Marker): sc-516102-CM (dilution range: 1:1000-1:10000), Cruz Marker™ Molecular Weight Standards: sc-2035, UltraCruz® Blocking Reagent: sc-516214 and Western Blotting Luminol Reagent: sc-2048. 2) Immunoprecipitation: use Protein A/G PLUS-Agarose: sc-2003 (0.5 ml agarose/2.0 ml).

DATA



PDE8A (1H6): sc-293342. Western blot analysis of PDE8A expression in non-transfected (A) and PDE8A transfected (B) 293T whole cell lysates.



PDE8A (1H6): sc-293342. Western blot analysis of human recombinant PDE8A fusion protein.

SELECT PRODUCT CITATIONS

- Chang, J., et al. 2019. Downregulation of RTN1-C attenuates MPP⁺-induced neuronal injury through inhibition of mGluR5 pathway in SN4741 cells. *Brain Res. Bull.* 146: 1-6.

RESEARCH USE

For research use only, not for use in diagnostic procedures.

PROTOCOLS

See our web site at www.scbt.com for detailed protocols and support products.