

# PRA1 (2A4): sc-293351

## BACKGROUND

PRA1 (prenylated Rab acceptor protein 1), alternately known as RABAC1 (Rab acceptor 1) or YIP3, is a 185 amino acid multi-pass membrane protein and Rab regulator required for vesicle formation from the Golgi complex. Existing as a homodimer, PRA1 is ubiquitously expressed and found at high levels in pituitary gland, kidney, placenta, stomach and lung. PRA1 interacts with prenylated Rab proteins, most specifically, Rab 4B, Rab 5A and Rab 5C, along with VAMP-2, Rab GDI  $\alpha$  and piccolo. PRA1 weakly interacts with Rab 4A, Rab 6, Rab 7, Rab 17 and Rab 22. PRA1 may regulate the action of Rab GTPases to SNARE complexes, thereby controlling vesicle fusion and docking. The gene encoding PRA1 maps to human chromosome 19q13.2.

## REFERENCES

- Bucci, C., De Gregorio, L. and Bruni, C.B. 2001. Expression analysis and chromosomal assignment of PRA1 and RILP genes. *Biochem. Biophys. Res. Commun.* 286: 815-819.
- Figueroa, C., Taylor, J. and Vojtek, A.B. 2001. Prenylated Rab acceptor protein is a receptor for prenylated small GTPases. *J. Biol. Chem.* 276: 28219-28225.
- Evans, D.T., Tillman, K.C. and Desrosiers, R.C. 2002. Envelope glycoprotein cytoplasmic domains from diverse lentiviruses interact with the prenylated Rab acceptor. *J. Virol.* 76: 327-337.
- Jacobs, C. and Pirson, I. 2003. Pitfalls in the use of transfected overexpression systems to study membrane proteins function: the case of TSH receptor and PRA1. *Mol. Cell. Endocrinol.* 209: 71-75.
- Online Mendelian Inheritance in Man, OMIM™. 2004. Johns Hopkins University, Baltimore, MD. MIM Number: 604925. World Wide Web URL: <http://www.ncbi.nlm.nih.gov/omim/>
- Blancou, P., Evans, D.T. and Desrosiers, R.C. 2005. PRA1 co-localizes with envelope but does not influence primate lentivirus production, infectivity or envelope incorporation. *J. Gen. Virol.* 86: 1785-1790.
- Kim, J.T., Cho, M.Y., Choi, S.C., Kim, J.W., Chae, S.K., Yoon, D.Y., Kim, J.W. and Lim, J.S. 2006. Prenylated Rab acceptor 1 (PRA1) inhibits TCF/ $\beta$ -catenin signaling by binding to  $\beta$ -catenin. *Biochem. Biophys. Res. Commun.* 349: 200-208.
- Liu, H.P., Wu, C.C. and Chang, Y.S. 2006. PRA1 promotes the intracellular trafficking and NF $\kappa$ B signaling of EBV latent membrane protein 1. *EMBO J.* 25: 4120-4130.
- Fo, C.S., Coleman, C.S., Wallick, C.J., Vine, A.L. and Bachmann, A.S. 2006. Genomic organization, expression profile, and characterization of the new protein PRA1 domain family, member 2 (PRAF2). *Gene* 371: 154-165.

## CHROMOSOMAL LOCATION

Genetic locus: RABAC1 (human) mapping to 19q13.2.

## SOURCE

PRA1 (2A4) is a mouse monoclonal antibody raised against amino acids 1-77 of PRA1 of human origin.

## PRODUCT

Each vial contains 100  $\mu$ g IgG<sub>2a</sub> kappa light chain in 1.0 ml of PBS with < 0.1% sodium azide and 0.1% gelatin.

## APPLICATIONS

PRA1 (2A4) is recommended for detection of PRA1 of human origin by Western Blotting (starting dilution 1:200, dilution range 1:100-1:1000), immunoprecipitation [1-2  $\mu$ g per 100-500  $\mu$ g of total protein (1 ml of cell lysate)] and solid phase ELISA (starting dilution 1:30, dilution range 1:30-1:3000).

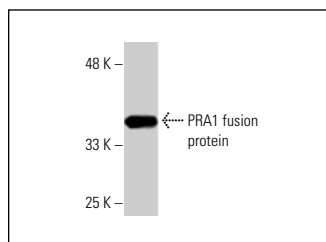
Suitable for use as control antibody for PRA1 siRNA (h): sc-97561, PRA1 shRNA Plasmid (h): sc-97561-SH and PRA1 shRNA (h) Lentiviral Particles: sc-97561-V.

Molecular Weight of PRA1: 21 kDa.

## RECOMMENDED SUPPORT REAGENTS

To ensure optimal results, the following support reagents are recommended: 1) Western Blotting: use m-IgG $\kappa$  BP-HRP: sc-516102 or m-IgG $\kappa$  BP-HRP (Cruz Marker): sc-516102-CM (dilution range: 1:1000-1:10000), Cruz Marker™ Molecular Weight Standards: sc-2035, UltraCruz® Blocking Reagent: sc-516214 and Western Blotting Luminol Reagent: sc-2048. 2) Immunoprecipitation: use Protein A/G PLUS-Agarose: sc-2003 (0.5 ml agarose/2.0 ml).

## DATA



PRA1 (2A4): sc-293351. Western blot analysis of human recombinant PRA1 fusion protein.

## SELECT PRODUCT CITATIONS

- Wang, X., Wang, X., Zhou, Y., Peng, C., Chen, H. and Lu, Y. 2019. Mitofusin2 regulates the proliferation and function of fibroblasts: the possible mechanisms underlying pelvic organ prolapse development. *Mol. Med. Rep.* 20: 2859-2866.

## STORAGE

Store at 4° C, \*\*DO NOT FREEZE\*\*. Stable for one year from the date of shipment. Non-hazardous. No MSDS required.

## RESEARCH USE

For research use only, not for use in diagnostic procedures.