

chicken anti-mouse IgG-HRP: sc-2954

BACKGROUND

Santa Cruz Biotechnology's secondary antibodies are available conjugated to either an enzyme, biotin or fluorophore for use in a variety of antibody-based applications including Western Blot, immunostaining, flow cytometry and ELISA. Secondary antibodies are commonly affinity purified against immobilized whole IgG isotypes, including IgG₁, IgG_{2a}, IgG_{2b}, IgG₃ and IgG₄. Santa Cruz Biotechnology offers a wide selection of secondary antibodies, which are used in conjunction with our Cruz Marker™ molecular weight standards. We also provide specialized secondaries, such as pre-adsorbed secondary antibodies, which are pre-adsorbed with human IgG and mouse IgG for immunoglobulin-rich tissues and cells, F(ab')₂ fragment secondary antibodies that reduce non-specific secondary antibody binding to Fc receptors on the cell surface, and isotype-specific secondary antibodies against IgM, IgA and IgY.

SOURCE

chicken anti-mouse IgG-HRP is an affinity purified secondary antibody raised in chicken against mouse IgG and conjugated to HRP (horseradish peroxidase).

PRODUCT

Each vial contains 200 µg chicken IgG in 0.5 ml of PBS containing 40% glycerol, 1% stabilizer protein and < 0.01% thimerosal.

APPLICATIONS

chicken anti-mouse IgG-HRP is recommended for detection of mouse IgG by Western Blotting (starting dilution: 1:5000, dilution range: 1:5000-1:10000) and ELISA (starting dilution: 1:500, dilution range: 1:250-1:1000). Optimal dilution to be determined by titration.

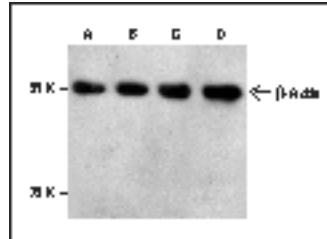
RECOMMENDED SUPPORT PRODUCTS

- Western Blotting Luminol Reagent, for 2,000 cm² membrane area: sc-2048
- RIPA Lysis Buffer, 50 ml, cell lysis buffer with protease inhibitors: sc-24948
- Electrophoresis Sample Buffer, 2X, 25 ml, reducing buffer: sc-24945
- Complete™ Protease Inhibitor Cocktail Tablet, 20 tablets: sc-29130
- Running Buffer, 10X, 1 L, TRIS-Glycine WB running buffer, pH 8.3: sc-24949
- Towbin, with SDS, 10X, 1 L, WB transfer buffer pH 8.3: sc-24954
- Bovine Serum Albumin (BSA), 100 g, blocking/incubation agent: sc-2323
- TBS Blotto A, lyophilized powder in single-use bottle: sc-2333
- UltraCruz® PVDF Transfer Membrane, 0.45 µm, 30 cm x 3 m roll: sc-3723
- UltraCruz® Nitrocellulose Pure Transfer Membrane, 0.22 µm, 30 cm x 3 m roll: sc-3718
- UltraCruz® Tissue Culture Dish, 100 mm polystyrene dish: sc-200286
- UltraCruz® Cell Scrapers, 25 cm, sterile, 100 per case: sc-213229
- UltraCruz® Electrophoresis Cell: sc-201625: runs up to 10 or 15 sample by SDS – PAGE protein electrophoresis
- UltraCruz® Autoradiography Film, Blue, 8 x 1, 100 sheets: sc-201697
- UltraCruz® Gel Incubation Trays, 100 per pack: sc-201755 (blue), sc-201756 (green), sc-201757 (pink), sc-201758 (yellow), sc-201759 (orange)

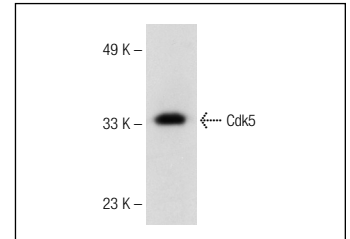
STORAGE

Store at 4° C, **DO NOT FREEZE**. Stable for one year from the date of shipment. Non-hazardous. No MSDS required.

DATA



chicken anti-mouse IgG-HRP: sc-2954. Western blot analysis of Cdk5 expression in HeLa (B), Jurkat (C) and HL60 (D) cell lysates and human myelin basic protein (A). Antibody tested: β-Actin (A): sc-17772.



chicken anti-mouse IgG-HRP: sc-2954. Western blot analysis of Cdk5 expression in HeLa whole cell lysate. Antibody tested: Cdk5 (J-3): sc-6247.

SELECT PRODUCT CITATIONS

- Zerani, M., et al. 2004. Ob receptor in rabbit ovary and leptin *in vitro* regulation of corpora lutea. *J. Endocrinol.* 183: 279-293.
- Schiller, M., et al. 2006. Mitogen- and stress-activated protein kinase 1 is critical for interleukin-1-induced, CREB-mediated, c-fos gene expression in keratinocytes. *Oncogene* 25: 4449-4457.
- Bland, R.D., et al. 2007. Dysregulation of pulmonary elastin synthesis and assembly in preterm lambs with chronic lung disease. *Am. J. Physiol. Lung Cell Mol. Physiol.* 292: L1370-L1384.
- Junglas, B., et al. 2009. Connective tissue growth factor induces extracellular matrix deposition in human trabecular meshwork cells. *Exp. Eye Res.* 88: 1065-1075.
- Bohr, D.C., et al. 2010. Increased expression of olfactomedin-1 and myocilin in podocytes during puromycin aminonucleoside nephrosis. *Nephrol. Dial. Transplant.* 26: 83-92.
- Hwang, W.L., et al. 2011. SNAIL regulates interleukin-8 expression, stem cell-like activity, and tumorigenicity of human colorectal carcinoma cells. *Gastroenterology* 141: 279-291.
- Guzmán, C., et al. 2014. The efficacy of Raf kinase recruitment to the GTPase H-ras depends on H-ras membrane conformer-specific nanoclustering. *J. Biol. Chem.* 289: 9519-9533.

RESEARCH USE

For research use only, not for use in diagnostic procedures.

See **m-IgGκ BP-HRP** (mouse IgGκ binding protein-HRP): **sc-516102**, our highly recommended recombinant alternative to conventional secondary anti-mouse IgG HRP reagents.