

Blr1 (H-80): sc-30029

BACKGROUND

Burkitt's lymphoma receptor 1 (Blr1) is a lymphocyte specific chemokine receptor expressed at low levels in secondary lymphoid tissues and in defined structures of the cerebellum. The G protein-coupled receptor has significant homology to other chemokine receptors. Stimulation of Blr1 by its ligand, B-lymphocyte chemoattractant (BLC) results in an influx of calcium into the cell and the chemotaxis of the cell. Blr1 is required for B-cell migration into splenic and Peyer's patch follicles. BLC expression in Peyer's patches is highest in germinal centers, where B cells undergo somatic mutation and affinity maturation.

REFERENCES

1. MacLennan, I.C. 1994. Germinal centers. *Annu. Rev. Immunol.* 12: 117-139.
2. Imal, Y. and Yamakawa, M. 1996. Morphology, function and pathology of follicular dendritic cells. *Pathol. Int.* 46: 807-833.

CHROMOSOMAL LOCATION

Genetic locus: CXCR5 (human) mapping to 11q23.3; Cxcr5 (mouse) mapping to 9 A5.2.

SOURCE

Blr1 (H-80) is a rabbit polyclonal antibody raised against amino acids 231-310 mapping near the C-terminus of Blr1 of human origin.

PRODUCT

Each vial contains 200 µg IgG in 1.0 ml of PBS with < 0.1% sodium azide and 0.1% gelatin.

STORAGE

Store at 4° C, ****DO NOT FREEZE****. Stable for one year from the date of shipment. Non-hazardous. No MSDS required.

APPLICATIONS

Blr1 (H-80) is recommended for detection of Blr1 of mouse, rat and human origin by Western Blotting (starting dilution 1:200, dilution range 1:100-1:1000), immunoprecipitation [1-2 µg per 100-500 µg of total protein (1 ml of cell lysate)], immunofluorescence (starting dilution 1:50, dilution range 1:50-1:500) and solid phase ELISA (starting dilution 1:30, dilution range 1:30-1:3000).

Blr1 (H-80) is also recommended for detection of Blr1 in additional species, including canine and porcine.

Suitable for use as control antibody for Blr1 siRNA (h): sc-29812, Blr1 siRNA (m): sc-29813, Blr1 shRNA Plasmid (h): sc-29812-SH, Blr1 shRNA Plasmid (m): sc-29813-SH, Blr1 shRNA (h) Lentiviral Particles: sc-29812-V and Blr1 shRNA (m) Lentiviral Particles: sc-29813-V.

Molecular Weight of Blr1 long isoform: 42 kDa.

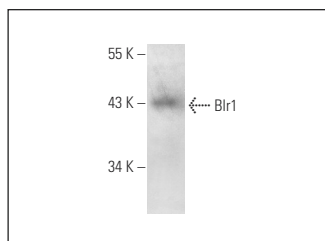
Molecular Weight of Blr1 short isoform: 37 kDa.

Positive Control: WEHI-231 whole cell lysate: sc-2213, NAMALWA cell lysate: sc-2234 or MOLT-4 cell lysate: sc-2233.

RECOMMENDED SECONDARY REAGENTS

To ensure optimal results, the following support (secondary) reagents are recommended: 1) Western Blotting: use goat anti-rabbit IgG-HRP: sc-2004 (dilution range: 1:2000-1:100,000) or Cruz Marker™ compatible goat anti-rabbit IgG-HRP: sc-2030 (dilution range: 1:2000-1:5000), Cruz Marker™ Molecular Weight Standards: sc-2035, TBS Blotto A Blocking Reagent: sc-2333 and Western Blotting Luminol Reagent: sc-2048. 2) Immunoprecipitation: use Protein A/G PLUS-Agarose: sc-2003 (0.5 ml agarose/2.0 ml). 3) Immunofluorescence: use goat anti-rabbit IgG-FITC: sc-2012 (dilution range: 1:100-1:400) or goat anti-rabbit IgG-TR: sc-2780 (dilution range: 1:100-1:400) with UltraCruz™ Mounting Medium: sc-24941.

DATA



Blr1 (H-80): sc-30029. Western blot analysis of Blr1 expression in MOLT-4 whole cell lysate.

RESEARCH USE

For research use only, not for use in diagnostic procedures.

PROTOCOLS

See our web site at www.scbt.com or our catalog for detailed protocols and support products.


 MONOS
Satisfaction
Guaranteed

Try **Blr1 (C-3): sc-373775**, our highly recommended monoclonal alternative to Blr1 (H-80).