

# cathepsin E (H-40): sc-30055

## BACKGROUND

The cathepsin family of proteolytic enzymes contains several diverse classes of proteases. The cysteine protease class comprises cathepsins B, L, H, K, S, and O. The aspartyl protease class is composed of cathepsins D and E. Cathepsin G is in the serine protease class. Most cathepsins are lysosomal and each is involved in cellular metabolism, participating in various events such as peptide biosynthesis and protein degradation. Cathepsin E is a non-lysosomal, intracellular proteinase.

## REFERENCES

1. Ishidoh, K., et al. 1987. Molecular cloning and sequencing of cDNA for rat cathepsin L. *FEBS Lett.* 223: 69-73.
2. Ishidoh, K., et al. 1987. Molecular cloning and sequencing of cDNA for rat cathepsin H. *Homology* in pro-peptide regions of cysteine proteases. *FEBS Lett.* 226: 33-37.
3. Redecker, B., et al. 1991. Molecular organization of the human cathepsin D gene. *DNA Cell Biol.* 10: 423-431.

## CHROMOSOMAL LOCATION

Genetic locus: CTSE (human) mapping to 1q32.1; Ctse (mouse) mapping to 1 E4.

## SOURCE

cathepsin E (H-40) is a rabbit polyclonal antibody raised against amino acids 141-180 mapping within an internal region of cathepsin E of human origin.

## PRODUCT

Each vial contains 200 µg IgG in 1.0 ml of PBS with < 0.1% sodium azide and 0.1% gelatin.

## APPLICATIONS

cathepsin E (H-40) is recommended for detection of cathepsin E of mouse, rat and human origin by Western Blotting (starting dilution 1:200, dilution range 1:100-1:1000), immunoprecipitation [1-2 µg per 100-500 µg of total protein (1 ml of cell lysate)], immunofluorescence (starting dilution 1:50, dilution range 1:50-1:500), immunohistochemistry (including paraffin-embedded sections) (starting dilution 1:50, dilution range 1:50-1:500) and solid phase ELISA (starting dilution 1:30, dilution range 1:30-1:3000).

cathepsin E (H-40) is also recommended for detection of cathepsin E in additional species, including equine and canine.

Suitable for use as control antibody for cathepsin E siRNA (h): sc-41473, cathepsin E siRNA (m): sc-41474, cathepsin E shRNA Plasmid (h): sc-41473-SH, cathepsin E shRNA Plasmid (m): sc-41474-SH, cathepsin E shRNA (h) Lentiviral Particles: sc-41473-V and cathepsin E shRNA (m) Lentiviral Particles: sc-41474-V.

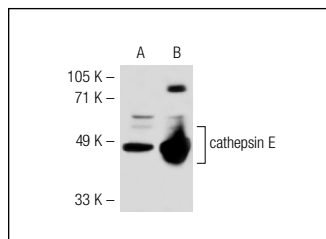
Molecular Weight of cathepsin E: 48 kDa.

Positive Controls: cathepsin E (h): 293T Lysate: sc-115648.

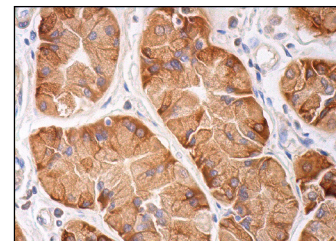
## RECOMMENDED SECONDARY REAGENTS

To ensure optimal results, the following support (secondary) reagents are recommended: 1) Western Blotting: use goat anti-rabbit IgG-HRP: sc-2004 (dilution range: 1:2000-1:100,000) or Cruz Marker™ compatible goat anti-rabbit IgG-HRP: sc-2030 (dilution range: 1:2000-1:5000), Cruz Marker™ Molecular Weight Standards: sc-2035, TBS Blotto A Blocking Reagent: sc-2333 and Western Blotting Luminol Reagent: sc-2048. 2) Immunofluorescence: use goat anti-rabbit IgG-FITC: sc-2012 (dilution range: 1:100-1:400) or goat anti-rabbit IgG-TR: sc-2780 (dilution range: 1:100-1:400) with UltraCruz™ Mounting Medium: sc-24941. 3) Immunohistochemistry: use ImmunoCruz™: sc-2051 or ABC: sc-2018 rabbit IgG Staining Systems.

## DATA



cathepsin E (H-40): sc-30055. Western blot analysis of cathepsin E expression in non-transfected: sc-117752 (A) and human cathepsin E transfected: sc-115648 (B) 293T whole cell lysates.



cathepsin E (H-40): sc-30055. Immunoperoxidase staining of formalin fixed, paraffin-embedded human upper stomach tissue showing cytoplasmic and membrane staining of glandular cells.

## SELECT PRODUCT CITATIONS

1. Antonelou, M.H., et al. 2009. Red blood cell aging markers during storage in citrate-phosphate-dextrose-saline-adenine-glucose-mannitol. *Transfusion* 50: 376-389.

## STORAGE

Store at 4° C, \*\*DO NOT FREEZE\*\*. Stable for one year from the date of shipment. Non-hazardous. No MSDS required.

## RESEARCH USE

For research use only, not for use in diagnostic procedures.

## PROTOCOLS

See our web site at [www.scbt.com](http://www.scbt.com) or our catalog for detailed protocols and support products.

**MONOS**  
Satisfaction  
Guaranteed

Try **cathepsin E (D-8): sc-166500** or **cathepsin E (E-8): sc-166343**, our highly recommended monoclonal alternatives to cathepsin E (H-40).