

Sec5 (N-15): sc-30285

BACKGROUND

The mammalian exocyst complex (sec 6/8) is a multiple protein complex essential for targeting exocytic vesicles to specific docking sites on the plasma membrane. Sec 5 is one of eight exocyst complex subunits: Sec3, Sec5, Sec6, Sec8, Sec10, Sec15, Exo70, and Exo84. Exocyst complex regulation depends upon Sec5 binding Ral in a GTP-dependent manner. Human Sec5 maps to chromosome 6p25.3.

REFERENCES

1. Fukai, S., et al. 2003. Structural basis of the interaction between RalA and Sec5, a subunit of the Sec6/8 complex. *EMBO J.* 13: 3267-3278.
2. Mott, H.R., et al. 2003. Structure of the GTPase-binding domain of Sec5 and elucidation of its Ral binding site. *J. Biol. Chem.* 278: 17053-17059.
3. Murthy, M., et al. 2003. Mutations in the exocyst component Sec5 disrupt neuronal membrane traffic, but neurotransmitter release persists. *Neuron* 37: 433-447.
4. Moskalenko, S., et al. 2003. Ral GTPases regulate exocyst assembly through dual subunit interactions. *J. Biol. Chem.* 278: 51743-51748.
5. Wang, S., et al. 2004. The mammalian exocyst, a complex required for exocytosis, inhibits tubulin polymerization. *J. Biol. Chem.* 279: 35958-35966.
6. Murthy, M., et al. 2004. The exocyst component Sec5 is required for membrane traffic and polarity in the *Drosophila* ovary. *Development* 131: 377-388.
7. LocusLink Report (LocusID: 55770). <http://www.ncbi.nlm.nih.gov/LocusLink/>

CHROMOSOMAL LOCATION

Genetic locus: EXOC2 (human) mapping to 6p25.3; Exoc2 (mouse) mapping to 13 A3.2.

SOURCE

Sec5 (N-15) is an affinity purified goat polyclonal antibody raised against a peptide mapping at the N-terminus of Sec5 of human origin.

PRODUCT

Each vial contains 200 µg IgG in 1.0 ml of PBS with < 0.1% sodium azide and 0.1% gelatin.

Blocking peptide available for competition studies, sc-30285 P, (100 µg peptide in 0.5 ml PBS containing < 0.1% sodium azide and 0.2% BSA).

STORAGE

Store at 4° C, ****DO NOT FREEZE****. Stable for one year from the date of shipment. Non-hazardous. No MSDS required.

PROTOCOLS

See our web site at www.scbt.com or our catalog for detailed protocols and support products.

APPLICATIONS

Sec5 (N-15) is recommended for detection of Sec5 of mouse, rat and human origin by Western Blotting (starting dilution 1:200, dilution range 1:100-1:1000), immunofluorescence (starting dilution 1:50, dilution range 1:50-1:500), immunohistochemistry (including paraffin-embedded sections) (starting dilution 1:50, dilution range 1:50-1:500) and solid phase ELISA (starting dilution 1:30, dilution range 1:30-1:3000).

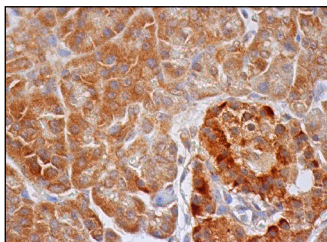
Sec5 (N-15) is also recommended for detection of Sec5 in additional species, including equine, canine, bovine, porcine and avian.

Suitable for use as control antibody for Sec5 siRNA (h): sc-106891, Sec5 siRNA (m): sc-153316, Sec5 shRNA Plasmid (h): sc-106891-SH, Sec5 shRNA Plasmid (m): sc-153316-SH, Sec5 shRNA (h) Lentiviral Particles: sc-106891-V and Sec5 shRNA (m) Lentiviral Particles: sc-153316-V.

RECOMMENDED SECONDARY REAGENTS

To ensure optimal results, the following support (secondary) reagents are recommended: 1) Western Blotting: use donkey anti-goat IgG-HRP: sc-2020 (dilution range: 1:2000-1:100,000) or Cruz Marker™ compatible donkey anti-goat IgG-HRP: sc-2033 (dilution range: 1:2000-1:5000), Cruz Marker™ Molecular Weight Standards: sc-2035, TBS Blotto A Blocking Reagent: sc-2333 and Western Blotting Luminol Reagent: sc-2048. 2) Immunofluorescence: use donkey anti-goat IgG-FITC: sc-2024 (dilution range: 1:100-1:400) or donkey anti-goat IgG-TR: sc-2783 (dilution range: 1:100-1:400) with UltraCruz™ Mounting Medium: sc-24941. 3) Immunohistochemistry: use ImmunoCruz™: sc-2053 or ABC: sc-2023 goat IgG Staining Systems.

DATA



Sec5 (N-15): sc-30285. Immunoperoxidase staining of formalin fixed, paraffin-embedded human pancreas tissue showing cytoplasmic staining of exocrine glandular cells and Islets of Langerhans.

RESEARCH USE

For research use only, not for use in diagnostic procedures.

MONOS
Satisfaction
Guaranteed

Try **Sec5 (F-7): sc-393230** or **Sec5 (C-10): sc-393467**, our highly recommended monoclonal alternatives to Sec5 (N-15).