

# Sec6 (N-16): sc-30288

## BACKGROUND

Sec6 is one of eight protein subunits composing the mammalian exocyst complex (Sec3, Sec5, Sec6, Sec8, Sec10, Sec15, Exo70 and Exo84). The mammalian exocyst complex (Sec6/8) is essential for targeting exocytic vesicles to specific docking sites on the plasma membrane. Sec6/8 regulates polarized secretion in a GTP-dependent manner. Human Sec6 maps to chromosome 5p15.33.

## REFERENCES

1. Brymora, A., Valova, V.A., Larsen, M.R., Roufogalis, B.D. and Robinson, P.J. 2001. The brain exocyst complex interacts with RalA in a GTP-dependent manner: identification of a novel mammalian Sec3 gene and a second Sec15 gene. *J. Biol. Chem.* 276: 29792-29797.
2. Yeaman, C. 2003. Ultracentrifugation-based approaches to study regulation of Sec6/8 (exocyst) complex function during development of epithelial cell polarity. *Methods* 30: 198-206.
3. Vik-Mo, E.O., Oltedal, L., Hoivik, E.A., Kleivdal, H., Eidet, J. and Davanger, S. 2003. Sec6 is localized to the plasma membrane of mature synaptic terminals and is transported with secretogranin II-containing vesicles. *Neuroscience* 119: 73-85.
4. Yeaman, C., Grindstaff, K.K. and Nelson, W. 2004. Mechanism of recruiting Sec6/8 (exocyst) complex to the apical junctional complex during polarization of epithelial cells. *J. Cell Sci.* 117: 559-570.
5. Hsu, S.C., TerBush, D., Abraham, M. and Guo, W. 2004. The exocyst complex in polarized exocytosis. *Int. Rev. Cytol.* 233: 243-265.
6. Murthy, M., Ranjan, R., Deneff, N., Higashi, M.E., Schupbach, T. and Schwarz, T.L. 2005. Sec6 mutations and the *Drosophila* exocyst complex. *J. Cell Sci.* 118: 1139-1150.

## CHROMOSOMAL LOCATION

Genetic locus: SEC6L1 (human) mapping to 5p15.33; Sec6l1 (mouse) mapping to 13 C1.

## SOURCE

Sec6 (N-16) is an affinity purified goat polyclonal antibody raised against a peptide mapping at the N-terminus of Sec6 of human origin.

## PRODUCT

Each vial contains 200 µg IgG in 1.0 ml of PBS with < 0.1% sodium azide and 0.2% gelatin.

Blocking peptide available for competition studies, sc-30288 P, (100 µg peptide in 0.5 ml PBS containing < 0.1% sodium azide and 0.2% BSA).

## STORAGE

Store at 4° C, \*\*DO NOT FREEZE\*\*. Stable for one year from the date of shipment. Non-hazardous. No MSDS required.

## APPLICATIONS

Sec6 (N-16) is recommended for detection of Sec6 of mouse, rat and human origin by Western Blotting (starting dilution 1:200, dilution range 1:100-1:1000), immunoprecipitation [1-2 µg per 100-500 µg of total protein (1 ml of cell lysate)], immunofluorescence (starting dilution 1:50, dilution range 1:50-1:500) and solid phase ELISA (starting dilution 1:30, dilution range 1:30-1:3000).

Sec6 (N-16) is also recommended for detection of Sec6 in additional species, including canine, bovine and avian.

Suitable for use as control antibody for Sec6 siRNA (h): sc-106816, Sec6 siRNA (m): sc-153317, Sec6 shRNA Plasmid (h): sc-106816-SH, Sec6 shRNA Plasmid (m): sc-153317-SH, Sec6 shRNA (h) Lentiviral Particles: sc-106816-V and Sec6 shRNA (m) Lentiviral Particles: sc-153317-V.

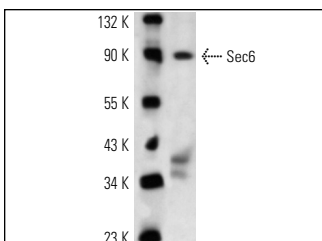
Molecular Weight of Sec6: 87 kDa.

Positive Controls: MDCK cell lysate: sc-2252.

## RECOMMENDED SECONDARY REAGENTS

To ensure optimal results, the following support (secondary) reagents are recommended: 1) Western Blotting: use donkey anti-goat IgG-HRP: sc-2020 (dilution range: 1:2000-1:100,000) or Cruz Marker™ compatible donkey anti-goat IgG-HRP: sc-2033 (dilution range: 1:2000-1:5000), Cruz Marker™ Molecular Weight Standards: sc-2035, TBS Blotto A Blocking Reagent: sc-2333 and Western Blotting Luminol Reagent: sc-2048. 2) Immunoprecipitation: use Protein A/G PLUS-Agarose: sc-2003 (0.5 ml agarose/2.0 ml). 3) Immunofluorescence: use donkey anti-goat IgG-FITC: sc-2024 (dilution range: 1:100-1:400) or donkey anti-goat IgG-TR: sc-2783 (dilution range: 1:100-1:400) with UltraCruz™ Mounting Medium: sc-24941.

## DATA



Sec6 (N-16): sc-30288. Western blot analysis of Sec6 expression in MDCK whole cell lysate.

## RESEARCH USE

For research use only, not for use in diagnostic procedures.

**MONOS**  
Satisfaction  
Guaranteed

Try **Sec6 (H-5): sc-374054** or **Sec6 (B-10): sc-271555**, our highly recommended monoclonal alternatives to Sec6 (N-16).