

# β-dystroglycan (P-14): sc-30404

## BACKGROUND

Dystroglycan (DG) is a cell surface receptor for several extracellular matrix molecules including Laminins, Agrin and Perlecan. Dystroglycan function is required for the formation of basement membranes in early development and the organization of laminin on the cell surface. α-dystroglycan is a membrane-associated, extracellular glycoprotein that is anchored to the cell-membrane by binding to the transmembrane glycoprotein β-dystroglycan to form an α/β-dystroglycan-complex. Additionally, dystroglycan is part of a multimolecular complex, where it associates with dystrophin, at the sarcolemma, to form the dystrophin-associated protein complex or with utrophin, at the neuromuscular junction, to form the utrophin-associated protein complex. Dystroglycan is also thought to participate in the clustering of nicotinic acetylcholine receptors at the neuromuscular junction.

## CHROMOSOMAL LOCATION

Genetic locus: DAG1 (human) mapping to 3p21.31; Dag1 (mouse) mapping to 9 F2.

## SOURCE

β-dystroglycan (P-14) is an affinity purified goat polyclonal antibody raised against a peptide mapping near the C-terminus of dystroglycan precursor of human origin.

## PRODUCT

Each vial contains 200 μg IgG in 1.0 ml of PBS with < 0.1% sodium azide and 0.1% gelatin.

Blocking peptide available for competition studies, sc-30404 P, (100 μg peptide in 0.5 ml PBS containing < 0.1% sodium azide and 0.2% BSA).

## APPLICATIONS

β-dystroglycan (P-14) is recommended for detection of β-dystroglycan of mouse, rat and human origin by Western Blotting (starting dilution 1:200, dilution range 1:100-1:1000), immunoprecipitation [1-2 μg per 100-500 μg of total protein (1 ml of cell lysate)], immunofluorescence (starting dilution 1:50, dilution range 1:50-1:500) and solid phase ELISA (starting dilution 1:30, dilution range 1:30-1:3000).

β-dystroglycan (P-14) is also recommended for detection of β-dystroglycan in additional species, including equine, canine, bovine and porcine.

Suitable for use as control antibody for α/β-dystroglycan siRNA (h): sc-43488, α/β-dystroglycan siRNA (m): sc-43489, α/β-dystroglycan shRNA Plasmid (h): sc-43488-SH, α/β-dystroglycan shRNA Plasmid (m): sc-43489-SH, α/β-dystroglycan shRNA (h) Lentiviral Particles: sc-43488-V and α/β-dystroglycan shRNA (m) Lentiviral Particles: sc-43489-V.

Molecular Weight of β-dystroglycan precursor: 97 kDa.

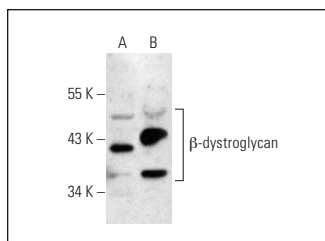
Molecular Weight of mature β-dystroglycan: 43 kDa.

Positive Controls: SK-BR-3 cell lysate: sc-2218, L6 whole cell lysate: sc-364196 or C6 whole cell lysate: sc-364373.

## RECOMMENDED SECONDARY REAGENTS

To ensure optimal results, the following support (secondary) reagents are recommended: 1) Western Blotting: use donkey anti-goat IgG-HRP: sc-2020 (dilution range: 1:2000-1:100,000) or Cruz Marker™ compatible donkey anti-goat IgG-HRP: sc-2033 (dilution range: 1:2000-1:5000), Cruz Marker™ Molecular Weight Standards: sc-2035, TBS Blotto A Blocking Reagent: sc-2333 and Western Blotting Luminol Reagent: sc-2048. 2) Immunoprecipitation: use Protein A/G PLUS-Agarose: sc-2003 (0.5 ml agarose/2.0 ml). 3) Immunofluorescence: use donkey anti-goat IgG-FITC: sc-2024 (dilution range: 1:100-1:400) or donkey anti-goat IgG-TR: sc-2783 (dilution range: 1:100-1:400) with UltraCruz™ Mounting Medium: sc-24941.

## DATA



β-dystroglycan (P-14): sc-30404. Western blot analysis of β-dystroglycan expression in SK-BR-3 (A) and L6 (B) whole cell lysates.

## STORAGE

Store at 4° C, \*\*DO NOT FREEZE\*\*. Stable for one year from the date of shipment. Non-hazardous. No MSDS required.

## RESEARCH USE

For research use only, not for use in diagnostic procedures.

## PROTOCOLS

See our web site at [www.scbt.com](http://www.scbt.com) or our catalog for detailed protocols and support products.

**MONOS**  
Satisfaction  
Guaranteed

Try **β-dystroglycan (A-9): sc-165999** or **β-dystroglycan (B-4): sc-165997**, our highly recommended monoclonal alternatives to β-dystroglycan (P-14).