

# Rab 3B (P-15): sc-305

## BACKGROUND

The Ras-related superfamily of guanine nucleotide binding proteins, which includes the R-Ras, Rap, Ral/Rec and Rho/Rab subfamilies, exhibit 30-60% homology with Ras p21. Accumulating data suggests an important role for Rab proteins, either in endocytosis or in biosynthetic protein transport. The transport of newly synthesized proteins from the endoplasmic reticulum to various stacks of the Golgi complex and to secretory vesicles involves at each stage the movement of carrier vesicles, a process that appears to involve Rab protein function. The possibility that Rab proteins might also direct the exocytosis from secretory vesicles to the plasma membrane is supported by the observation that in yeast, the Sec4 protein, which is 40% homologous to Rab proteins, is associated with secretory vesicles. At least eight members of the Rab subfamily have been identified, each of which is found at a particular stage of a membrane transport pathway.

## CHROMOSOMAL LOCATION

Genetic locus: RAB3B (human) mapping to 1p31; Rab3b (mouse) mapping to 4 C7.

## SOURCE

Rab 3B (P-15) is an affinity purified rabbit polyclonal antibody raised against a peptide mapping within the C-terminus of Rab 3B of human origin.

## PRODUCT

Each vial contains 200 µg IgG in 1.0 ml of PBS with < 0.1% sodium azide and 0.1% gelatin.

Blocking peptide available for competition studies, sc-305 P, (100 µg peptide in 0.5 ml PBS containing < 0.1% sodium azide and 0.2% BSA).

## STORAGE

Store at 4° C, **\*\*DO NOT FREEZE\*\***. Stable for one year from the date of shipment. Non-hazardous. No MSDS required.

## APPLICATIONS

Rab 3B (P-15) is recommended for detection of Rab 3B of mouse, rat and human origin by Western Blotting (starting dilution 1:100, dilution range 1:50-1:500), immunoprecipitation [1-2 µg per 100-500 µg of total protein (1 ml of cell lysate)], immunofluorescence (starting dilution 1:25, dilution range 1:25-1:250) and solid phase ELISA (starting dilution 1:30, dilution range 1:30-1:3000).

Rab 3B (P-15) is also recommended for detection of Rab 3B in additional species, including canine, bovine and porcine.

Suitable for use as control antibody for Rab 3B siRNA (h): sc-41814, Rab 3B siRNA (m): sc-41815, Rab 3B shRNA Plasmid (h): sc-41814-SH, Rab 3B shRNA Plasmid (m): sc-41815-SH, Rab 3B shRNA (h) Lentiviral Particles: sc-41814-V and Rab 3B shRNA (m) Lentiviral Particles: sc-41815-V.

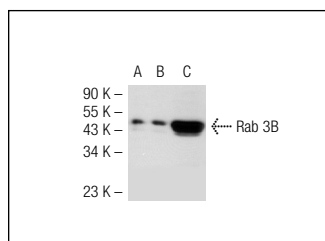
Molecular Weight of Rab 3B: 25 kDa.

Positive Controls: Rab 3B (m): 293T Lysate: sc-125877 or NIH/3T3 whole cell lysate: sc-2210.

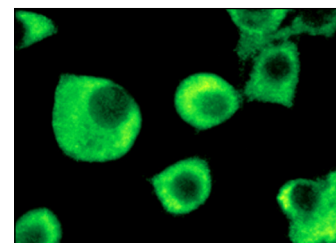
## RECOMMENDED SECONDARY REAGENTS

To ensure optimal results, the following support (secondary) reagents are recommended: 1) Western Blotting: use goat anti-rabbit IgG-HRP: sc-2004 (dilution range: 1:2000-1:100,000) or Cruz Marker™ compatible goat anti-rabbit IgG-HRP: sc-2030 (dilution range: 1:2000-1:5000), Cruz Marker™ Molecular Weight Standards: sc-2035, TBS Blotto A Blocking Reagent: sc-2333 and Western Blotting Luminol Reagent: sc-2048. 2) Immunoprecipitation: use Protein A/G PLUS-Agarose: sc-2003 (0.5 ml agarose/2.0 ml). 3) Immunofluorescence: use goat anti-rabbit IgG-FITC: sc-2012 (dilution range: 1:100-1:400) or goat anti-rabbit IgG-TR: sc-2780 (dilution range: 1:100-1:400) with UltraCruz™ Mounting Medium: sc-24941.

## DATA



Rab 3B (P-15): sc-305. Western blot analysis of Rab 3B expression in non-transfected 293T: sc-117752 (A), mouse Rab 3B transfected 293T: sc-125877 (B) and NIH/3T3 (C) whole cell lysates.



Rab 3B (P-15): sc-305. Immunofluorescence staining of methanol-fixed NIH/3T3 cells showing cytoplasmic localization.

## RESEARCH USE

For research use only, not for use in diagnostic procedures.

## PROTOCOLS

See our web site at [www.scbt.com](http://www.scbt.com) or our catalog for detailed protocols and support products.

**MONOS**  
Satisfaction  
Guaranteed

Try **Rab 3B (48-K2): sc-81911**, our highly recommended monoclonal alternative to Rab 3B (P-15).