

Dysadherin 2 (L-15): sc-30603

BACKGROUND

Dysadherin (FXD domain-containing ion transport regulator 5) is a cancer-associated cell membrane glycoprotein. Dysadherin downregulates the expression of E-cadherin, the prime mediator of cell-cell adhesion in epithelial cells, by a post-transcriptional mechanism. Decreasing intercellular adhesiveness facilitates the metastasis of cancer cells. Dysadherin is present in spleen, lung, skeletal muscle and testis tissue, and maps to human chromosome 19q12-q13.1.

REFERENCES

- Ino, Y., et al. 2002. Dysadherin, a cancer-associated cell membrane glycoprotein, downregulates E-cadherin and promotes metastasis. *Proc. Natl. Acad. Sci. USA* 99: 365-370.
- Shimamura, T., et al. 2003. Dysadherin overexpression in pancreatic ductal adenocarcinoma reflects tumor aggressiveness: relationship to E-cadherin expression. *J. Clin. Oncol.* 21: 659-667.
- Sato, H., et al. 2003. Dysadherin: expression and clinical significance in thyroid carcinoma. *J. Clin. Endocrinol. Metab.* 9: 4407-4412.
- Hirohashi, S., et al. 2003. Cell adhesion system and human cancer morphogenesis. *Cancer Sci.* 7: 575-581.
- Wu, D., et al. 2004. Prognostic significance of Dysadherin expression in cervical squamous cell carcinoma. *Pathol. Oncol. Res.* 10: 212-218.
- Shimamura, T., et al. 2004. Dysadherin expression facilitates cell motility and metastatic potential of human pancreatic cancer cells. *Cancer Res.* 64: 6989-6995.
- SWISS-PROT/TrEMBL (P97808). World Wide Web URL: <http://www.expasy.ch/sprot/sprot-top.html>.
- LocusLink Report (LocusID: 53827). <http://www.ncbi.nlm.nih.gov/LocusLink/>

CHROMOSOMAL LOCATION

Genetic locus: FXD5 (human) mapping to 19q12-q13.1; Fxd5 (mouse) mapping to 7 A3.

SOURCE

Dysadherin 2 (L-15) is an affinity purified goat polyclonal antibody raised against a peptide mapping within an N-terminal extracellular domain of Dysadherin isoform 2 of human origin.

PRODUCT

Each vial contains 200 µg IgG in 1.0 ml of PBS with < 0.1% sodium azide and 0.1% gelatin.

Blocking peptide available for competition studies, sc-30603 P, (100 µg peptide in 0.5 ml PBS containing < 0.1% sodium azide and 0.2% BSA).

STORAGE

Store at 4° C, ****DO NOT FREEZE****. Stable for one year from the date of shipment. Non-hazardous. No MSDS required.

APPLICATIONS

Dysadherin 2 (L-15) is recommended for detection of Dysadherin isoform 2 of human origin by Western Blotting (starting dilution 1:200, dilution range 1:100-1:1000), immunoprecipitation [1–2 µg per 100–500 µg of total protein (1 ml of cell lysate)], immunofluorescence (starting dilution 1:50, dilution range 1:50-1:500) and solid phase ELISA (starting dilution 1:30, dilution range 1:30-1:3000); non cross-reactive with mouse or rat Dysadherin, or human isoform 1.

Suitable for use as control antibody for Dysadherin siRNA (h): sc-45745.

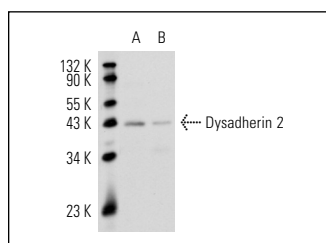
Molecular Weight of Dysadherin: 50 kDa.

Positive Controls: Jurkat whole cell lysate: sc-2204 or SHP-77 cell lysate.

RECOMMENDED SECONDARY REAGENTS

To ensure optimal results, the following support (secondary) reagents are recommended: 1) Western Blotting: use donkey anti-goat IgG-HRP: sc-2020 (dilution range: 1:2000-1:100,000) or Cruz Marker™ compatible donkey anti-goat IgG-HRP: sc-2033 (dilution range: 1:2000-1:5000), Cruz Marker™ Molecular Weight Standards: sc-2035, TBS Blotto A Blocking Reagent: sc-2333 and Western Blotting Luminol Reagent: sc-2048. 2) Immunoprecipitation: use Protein A/G PLUS-Agarose: sc-2003 (0.5 ml agarose/2.0 ml). 3) Immunofluorescence: use donkey anti-goat IgG-FITC: sc-2024 (dilution range: 1:100-1:400) or donkey anti-goat IgG-TR: sc-2783 (dilution range: 1:100-1:400) with UltraCruz™ Mounting Medium: sc-24941.

DATA



Dysadherin 2 (L-15): sc-30603. Western blot analysis of Dysadherin 2 expression in Jurkat (A) and SHP-77 (B) whole cell lysates.

RESEARCH USE

For research use only, not for use in diagnostic procedures.

PROTOCOLS

See our web site at www.scbt.com or our catalog for detailed protocols and support products.