

S-100A13 (C-12): sc-30653

BACKGROUND

The S-100 protein family consists of a group of calcium-binding proteins that exhibit cell and tissue-specific expression. The expression levels of its members differ in various pathological conditions. The extracellular functions of the S-100 family may include the ability to enhance neurite outgrowth, involvement in inflammation and motility of tumor cells. S-100A13 is a 98 amino acid protein with two EF-hand calcium-binding domains. High levels of S-100A13 mRNA are present in skeletal muscle, heart, kidney, ovary, small intestine and pancreas. S-100A13 translocates in response to elevated intracellular calcium levels induced by Angiotensin II. S-100A13 co-localizes with S-100A1 on human chromosome 1q21.3, the site where the majority of S-100 proteins cluster.

CHROMOSOMAL LOCATION

Genetic locus: S100A13 (human) mapping to 1q21.3; S100a13 (mouse) mapping to 3 F1.

SOURCE

S-100A13 (C-12) is an affinity purified goat polyclonal antibody raised against a peptide mapping within a C-terminal calcium binding domain of S-100A13 of human origin.

PRODUCT

Each vial contains 200 µg IgG in 1.0 ml of PBS with < 0.1% sodium azide and 0.1% gelatin.

Blocking peptide available for competition studies, sc-30653 P, (100 µg peptide in 0.5 ml PBS containing < 0.1% sodium azide and 0.2% BSA).

STORAGE

Store at 4° C, ****DO NOT FREEZE****. Stable for one year from the date of shipment. Non-hazardous. No MSDS required.

APPLICATIONS

S-100A13 (C-12) is recommended for detection of S-100A13 of mouse, rat and human origin by Western Blotting (starting dilution 1:200, dilution range 1:100-1:1000), immunofluorescence (starting dilution 1:50, dilution range 1:50-1:500), immunohistochemistry (including paraffin-embedded sections) (starting dilution 1:50, dilution range 1:50-1:500) and solid phase ELISA (starting dilution 1:30, dilution range 1:30-1:3000).

S-100A13 (C-12) is also recommended for detection of S-100A13 in additional species, including equine and canine.

Suitable for use as control antibody for S-100A13 siRNA (h): sc-63355, S-100A13 siRNA (m): sc-63356, S-100A13 shRNA Plasmid (h): sc-63355-SH, S-100A13 shRNA Plasmid (m): sc-63356-SH, S-100A13 shRNA (h) Lentiviral Particles: sc-63355-V and S-100A13 shRNA (m) Lentiviral Particles: sc-63356-V.

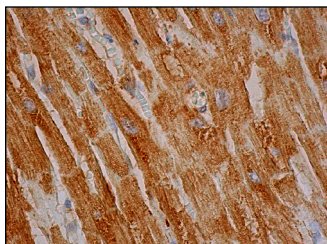
Molecular Weight of S-100A13: 10 kDa.

Positive Controls: MCF7 whole cell lysate: sc-2206 or NIH/3T3 + heat shock cell lysate: sc-2217.

RECOMMENDED SECONDARY REAGENTS

To ensure optimal results, the following support (secondary) reagents are recommended: 1) Western Blotting: use donkey anti-goat IgG-HRP: sc-2020 (dilution range: 1:2000-1:100,000) or Cruz Marker™ compatible donkey anti-goat IgG-HRP: sc-2033 (dilution range: 1:2000-1:5000), Cruz Marker™ Molecular Weight Standards: sc-2035, TBS Blotto A Blocking Reagent: sc-2333 and Western Blotting Luminol Reagent: sc-2048. 2) Immunofluorescence: use donkey anti-goat IgG-FITC: sc-2024 (dilution range: 1:100-1:400) or donkey anti-goat IgG-TR: sc-2783 (dilution range: 1:100-1:400) with UltraCruz™ Mounting Medium: sc-24941. 3) Immunohistochemistry: use ImmunoCruz™: sc-2053 or ABC: sc-2023 goat IgG Staining Systems.

DATA



S-100A13 (C-12): sc-30653. Immunoperoxidase staining of formalin fixed, paraffin-embedded human heart muscle tissue showing cytoplasmic staining of myocytes.

RESEARCH USE

For research use only, not for use in diagnostic procedures.

PROTOCOLS

See our web site at www.scbt.com or our catalog for detailed protocols and support products.



Try **S-100A13 (63-Y): sc-100935**, our highly recommended monoclonal alternative to S-100A13 (C-12).