

MEK Kinase-4 (N-17): sc-30662

BACKGROUND

Mitogen-activated protein (MAP) kinase cascades are activated by various extracellular stimuli including growth factors. The MEK kinases (also called MAP kinase kinase kinases) phosphorylate and activate the MAP kinases, including ERK, JNK and p38. The MEK kinases characterized to date include Raf-1, Raf-B, MOS, MEK Kinase-1, MEK Kinase-2, MEK Kinase-3, MEK Kinase-4 and ASK 1 (also designated MEK Kinase-5). MEK Kinase-1 has been shown to phosphorylate MEK-1 via Raf-independent pathway. Evidence suggests that MEK-3 is preferentially activated by MEK Kinase-3 and that MEK-4 is activated by both MEK Kinase-2 and MEK Kinase-3. MEK Kinase-4 has been shown to specifically activate the JNK pathway. ASK1 activates both MEK-4 and MEK-3/MEK-6 pathways.

REFERENCES

1. Lange-Carter, C.A., et al. 1993. A divergence in the MAP kinase regulatory network defined by MEK kinase and Raf. *Science* 260: 315-319.
2. Guan, K.L. 1994. The mitogen activated protein kinase signal transduction pathway: from the cell surface to the nucleus. *Cell. Signal.* 6: 581-589.
3. Wang, X.S., et al. 1996. Molecular cloning and characterization of a novel protein kinase with a catalytic domain homologous to mitogen-activated protein kinase kinase kinase. *J. Biol. Chem.* 271: 31607-31611.
4. Gerwins, P., et al. 1997. Cloning of a novel mitogen-activated protein kinase kinase kinase, MEKK4, that selectively regulates the c-Jun amino terminal kinase pathway. *J. Biol. Chem.* 272: 8288-8295.
5. Deacon, K., et al. 1997. Characterization of the mitogen-activated protein kinase kinase 4 (MKK4)/c-Jun NH₂-terminal kinase 1 and MKK3/p38 pathways regulated by MEK kinases 2 and 3. MEK kinase 3 activates MKK3 but does not cause activation of p38 kinase *in vivo*. *J. Biol. Chem.* 272: 14489-14496.
6. Fanger, G.R., et al. 1997. MEK kinases are regulated by EGF and selectively interact with Rac/Cdc42. *EMBO J.* 16: 4961-4972.

CHROMOSOMAL LOCATION

Genetic locus: MAP3K4 (human) mapping to 6q26; Map3k4 (mouse) mapping to 17 A1.

SOURCE

MEK Kinase-4 (N-17) is an affinity purified goat polyclonal antibody raised against a peptide mapping near the N-terminus of MEK Kinase-4 of human origin.

PRODUCT

Each vial contains 200 µg IgG in 1.0 ml of PBS with < 0.1% sodium azide and 0.1% gelatin.

Blocking peptide available for competition studies, sc-30662 P, (100 µg peptide in 0.5 ml PBS containing < 0.1% sodium azide and 0.2% BSA).

RESEARCH USE

For research use only, not for use in diagnostic procedures.

APPLICATIONS

MEK Kinase-4 (N-17) is recommended for detection of MEK Kinase-4 of mouse, rat and human origin by Western Blotting (starting dilution 1:200, dilution range 1:100-1:1000), immunofluorescence (starting dilution 1:50, dilution range 1:50-1:500), immunohistochemistry (including paraffin-embedded sections) (starting dilution 1:50, dilution range 1:50-1:500) and solid phase ELISA (starting dilution 1:30, dilution range 1:30-1:3000).

MEK Kinase-4 (N-17) is also recommended for detection of MEK Kinase-4 in additional species, including equine, canine and bovine.

Suitable for use as control antibody for MEK Kinase-4 siRNA (h): sc-35902, MEK Kinase-4 siRNA (m): sc-35903, MEK Kinase-4 shRNA Plasmid (h): sc-35902-SH, MEK Kinase-4 shRNA Plasmid (m): sc-35903-SH, MEK Kinase-4 shRNA (h) Lentiviral Particles: sc-35902-V and MEK Kinase-4 shRNA (m) Lentiviral Particles: sc-35903-V.

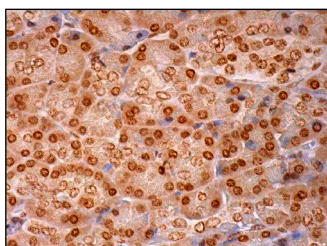
Molecular Weight of MEK Kinase-4: 180 kDa.

Positive Controls: KNRK whole cell lysate: sc-2214, NIH/3T3 whole cell lysate: sc-2210 or Jurkat whole cell lysate: sc-2204.

RECOMMENDED SECONDARY REAGENTS

To ensure optimal results, the following support (secondary) reagents are recommended: 1) Western Blotting: use donkey anti-goat IgG-HRP: sc-2020 (dilution range: 1:2000-1:100,000) or Cruz Marker™ compatible donkey anti-goat IgG-HRP: sc-2033 (dilution range: 1:2000-1:5000), Cruz Marker™ Molecular Weight Standards: sc-2035, TBS Blotto A Blocking Reagent: sc-2333 and Western Blotting Luminol Reagent: sc-2048. 2) Immunofluorescence: use donkey anti-goat IgG-FITC: sc-2024 (dilution range: 1:100-1:400) or donkey anti-goat IgG-TR: sc-2783 (dilution range: 1:100-1:400) with UltraCruz™ Mounting Medium: sc-24941. 3) Immunohistochemistry: use ImmunoCruz™: sc-2053 or ABC: sc-2023 goat IgG Staining Systems.

DATA



MEK Kinase-4 (N-17): sc-30662. Immunoperoxidase staining of formalin fixed, paraffin-embedded human pancreas tissue showing perinuclear and cytoplasmic staining of exocrine glandular cells.

STORAGE

Store at 4° C, **DO NOT FREEZE**. Stable for one year from the date of shipment. Non-hazardous. No MSDS required.

PROTOCOLS

See our web site at www.scbt.com or our catalog for detailed protocols and support products.