

## c-Yes (T-20): sc-30676

### BACKGROUND

Src is the human homolog of the v-src gene of the Rous sarcoma virus, also known as avian sarcoma virus or ASV. Src is the first proto-oncogenic non-receptor tyrosine kinase characterized in human. By virtue of common structural motifs, the Src family is composed of nine members in vertebrates, including Src, Yes, Fgr, Frk, Fyn, Lyn, Hck, Lck and Blk. Src-family kinases transduce signals that control a variety of cellular processes, including proliferation, differentiation, motility, and adhesion. Src-family kinases contain an amino terminal cell membrane anchor followed by an SH3 domain and an SH2 domain involved in modular association and activation, respectively. Human c-Yes is the cellular homolog of the Yamaguchi sarcoma virus oncogene, Yes1. The human c-Yes gene maps to chromosome 18p11.32 and encodes a 543 amino acid protein. c-Src and c-Yes kinases are over 80% homologous outside of unique amino termini, and their respective SH3 and SH2 domains are capable of directing specificity in substrate binding.

### CHROMOSOMAL LOCATION

Genetic locus: YES1 (human) mapping to 18p11.32; Yes1 (mouse) mapping to 5 B1.

### SOURCE

c-Yes (T-20) is an affinity purified goat polyclonal antibody raised against a peptide mapping near the N-terminus of c-Yes of human origin.

### PRODUCT

Each vial contains 200 µg IgG in 1.0 ml of PBS with < 0.1% sodium azide and 0.1% gelatin.

Blocking peptide available for competition studies, sc-30676 P, (100 µg peptide in 0.5 ml PBS containing < 0.1% sodium azide and 0.2% BSA).

### STORAGE

Store at 4° C, **\*\*DO NOT FREEZE\*\***. Stable for one year from the date of shipment. Non-hazardous. No MSDS required.

### APPLICATIONS

c-Yes (T-20) is recommended for detection of c-Yes of human and, to a lesser extent, mouse and rat origin by Western Blotting (starting dilution 1:200, dilution range 1:100-1:1000), immunoprecipitation [1-2 µg per 100-500 µg of total protein (1 ml of cell lysate)], immunofluorescence (starting dilution 1:50, dilution range 1:50-1:500) and solid phase ELISA (starting dilution 1:30, dilution range 1:30-1:3000).

c-Yes (T-20) is also recommended for detection of c-Yes in additional species, including equine.

Suitable for use as control antibody for c-Yes siRNA (h): sc-29860, c-Yes siRNA (m): sc-29861, c-Yes shRNA Plasmid (h): sc-29860-SH, c-Yes shRNA Plasmid (m): sc-29861-SH, c-Yes shRNA (h) Lentiviral Particles: sc-29860-V and c-Yes shRNA (m) Lentiviral Particles: sc-29861-V.

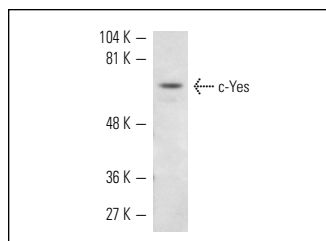
Molecular Weight of c-Yes: 62 kDa.

Positive Controls: C32 whole cell lysate: sc-2205, human platelet whole cell lysate: sc-363773 or Jurkat whole cell lysate: sc-2204.

### RECOMMENDED SECONDARY REAGENTS

To ensure optimal results, the following support (secondary) reagents are recommended: 1) Western Blotting: use donkey anti-goat IgG-HRP: sc-2020 (dilution range: 1:2000-1:100,000) or Cruz Marker™ compatible donkey anti-goat IgG-HRP: sc-2033 (dilution range: 1:2000-1:5000), Cruz Marker™ Molecular Weight Standards: sc-2035, TBS Blotto A Blocking Reagent: sc-2333 and Western Blotting Luminol Reagent: sc-2048. 2) Immunoprecipitation: use Protein A/G PLUS-Agarose: sc-2003 (0.5 ml agarose/2.0 ml). 3) Immunofluorescence: use donkey anti-goat IgG-FITC: sc-2024 (dilution range: 1:100-1:400) or donkey anti-goat IgG-TR: sc-2783 (dilution range: 1:100-1:400) with UltraCruz™ Mounting Medium: sc-24941.

### DATA



c-Yes (T-20): sc-30676. Western blot analysis of c-Yes expression in Jurkat whole cell lysate.

### RESEARCH USE

For research use only, not for use in diagnostic procedures.

### PROTOCOLS

See our web site at [www.scbt.com](http://www.scbt.com) or our catalog for detailed protocols and support products.

**MONOS**  
Satisfaction  
Guaranteed

Try **c-Yes (C-10): sc-46674** or **c-Yes (B-11): sc-515336**, our highly recommended monoclonal alternatives to c-Yes (T-20).