

LIMK-1 (G-17): sc-30696

BACKGROUND

Proteins containing LIM motifs are typically involved in cell fate determination and growth control. A family of proteins designated LIM kinases, including LIMK-1 and LIMK-2, has been identified. LIMK-1 has been shown to regulate the stabilization of F-Actin structures and cofilin activity, indicating that LIMK-1 plays a role in a signaling pathway involved in the regulation of cell motility and morphogenesis. LIMK-1 inhibits neuronal differentiation of PC12 cells, and is thought to act by interfering with events downstream of MAPK activation. Expression patterns of LIMK-1 and LIMK-2 suggest that these proteins may have different functions during development. A truncated form of LIMK-2 has been identified in adult testis that is thought to arise from an alternative initiation exon.

REFERENCES

- Okano, I., et al. 1995. Identification and characterization of a novel family of serine/threonine kinases containing two N-terminal LIM motifs. *J. Biol. Chem.* 270: 31321-31330.
- Nunoue, K., et al. 1995. LIMK-1 and LIMK-2, two members of a LIM motif-containing protein kinase family. *Oncogene* 11: 701-710.
- Higuchi, O., et al. 1997. Inhibition of activated Ras-induced neuronal differentiation of PC12 cells by the LIM domain of LIM-kinase 1. *Oncogene* 14: 1819-1825.
- Mori, T., et al. 1997. Comparison of tissue distribution of two novel serine/threonine kinase genes containing the LIM motif (LIMK-1 and LIMK-2) in the developing rat. *Brain Res. Mol. Brain Res.* 45: 247-254.
- Yang, N., et al. 1998. Cofilin phosphorylation by LIMK-1 and its role in Rac-mediated Actin reorganization. *Nature* 393: 809-812.
- Takahashi, H., et al. 1998. A novel transcript encoding truncated LIM kinase 2 is specifically expressed in male germ cells undergoing meiosis. *Biochem. Biophys. Res. Commun.* 249: 138-145.

CHROMOSOMAL LOCATION

Genetic locus: LIMK1 (human) mapping to 7q11.23; Limk1 (mouse) mapping to 5 G2.

SOURCE

LIMK-1 (G-17) is an affinity purified goat polyclonal antibody raised against a peptide mapping near the N-terminus of LIMK-1 of human origin.

PRODUCT

Each vial contains 200 µg IgG in 1.0 ml of PBS with < 0.1% sodium azide and 0.1% gelatin.

Blocking peptide available for competition studies, sc-30696 P, (100 µg peptide in 0.5 ml PBS containing < 0.1% sodium azide and 0.2% BSA).

STORAGE

Store at 4° C, ****DO NOT FREEZE****. Stable for one year from the date of shipment. Non-hazardous. No MSDS required.

APPLICATIONS

LIMK-1 (G-17) is recommended for detection of LIMK-1 of mouse, rat and human origin by Western Blotting (starting dilution 1:200, dilution range 1:100-1:1000), immunoprecipitation [1-2 µg per 100-500 µg of total protein (1 ml of cell lysate)], immunofluorescence (starting dilution 1:50, dilution range 1:50-1:500) and solid phase ELISA (starting dilution 1:30, dilution range 1:30-1:3000).

LIMK-1 (G-17) is also recommended for detection of LIMK-1 in additional species, including canine, bovine and porcine.

Suitable for use as control antibody for LIMK-1 siRNA (h): sc-35810, LIMK-1 siRNA (m): sc-35811, LIMK-1 shRNA Plasmid (h): sc-35810-SH, LIMK-1 shRNA Plasmid (m): sc-35811-SH, LIMK-1 shRNA (h) Lentiviral Particles: sc-35810-V and LIMK-1 shRNA (m) Lentiviral Particles: sc-35811-V.

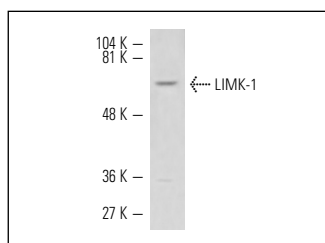
Molecular Weight of LIMK-1: 72 kDa.

Positive Controls: NIH/3T3 whole cell lysate: sc-2210, Hep G2 cell lysate: sc-2227 or HeLa whole cell lysate: sc-2200.

RECOMMENDED SECONDARY REAGENTS

To ensure optimal results, the following support (secondary) reagents are recommended: 1) Western Blotting: use donkey anti-goat IgG-HRP: sc-2020 (dilution range: 1:2000-1:100,000) or Cruz Marker™ compatible donkey anti-goat IgG-HRP: sc-2033 (dilution range: 1:2000-1:5000), Cruz Marker™ Molecular Weight Standards: sc-2035, TBS Blotto A Blocking Reagent: sc-2333 and Western Blotting Luminol Reagent: sc-2048. 2) Immunoprecipitation: use Protein A/G PLUS-Agarose: sc-2003 (0.5 ml agarose/2.0 ml). 3) Immunofluorescence: use donkey anti-goat IgG-FITC: sc-2024 (dilution range: 1:100-1:400) or donkey anti-goat IgG-TR: sc-2783 (dilution range: 1:100-1:400) with UltraCruz™ Mounting Medium: sc-24941.

DATA



LIMK-1 (G-17): sc-30696. Western blot analysis of LIMK-1 expression in Hep G2 whole cell lysate.

RESEARCH USE

For research use only, not for use in diagnostic procedures.

MONOS
Satisfaction
Guaranteed

Try **LIMK-1 (H-12): sc-515585** or **LIMK-1 (C-10): sc-28370**, our highly recommended monoclonal alternatives to LIMK-1 (G-17).