

# Annexin VIII (R-18): sc-30767

## BACKGROUND

The Annexin family is composed of at least ten mammalian genes, which encode calcium-binding proteins. The Annexin proteins are characterized by a conserved core domain, which binds to phospholipids in a calcium-dependent manner. Annexin family members have been implicated as regulators of such diverse processes as ion flux, endocytosis and exocytosis, and cellular adhesion. Annexin V is ubiquitously expressed at high levels in tissues and cells grown in tissue culture, while Annexin VIII exhibits a more limited distribution. Where co-expressed in the same tissues, Annexin VIII is often expressed at a 100-fold lower level than Annexin V. However, Annexin VIII is preferentially expressed in acute promyelocytic leukemia (APL) cells which may relate to its role in hematopoietic cell differentiation.

## REFERENCES

1. Smith, P.D. and Moss, S.E. 1994. Structural evolution of the Annexin supergene family. *Trends Gen.* 10: 241-246.
2. Reutelingsperger, C.P., van Heerde, W., Hauptmann, R., Maassen, C., van Gool, R.G., de Leeuw, P. and Tiebosch, A. 1994. Differential tissue expression of Annexin VIII in human. *FEBS Lett.* 349: 120-124.
3. Liu, J.H., Stass, S.A. and Chang, K.S. 1994. Expression of the Annexin VIII gene in acute promyelocytic leukemia. *Leuk. Lymph.* 13: 381-386.
4. Chan, H.C., Kaetzel, M.A., Gotter, A.L., Dedman, J.R. and Nelson, D.J. 1994. Annexin IV inhibits calmodulin-dependent protein kinase II-activated chloride conductance. A novel mechanism for ion channel regulation. *J. Biol. Chem.* 269: 32464-32468.
5. Mailliard, W.S., Haigler, H.T. and Schlaepfer, D.D. 1996. Calcium-dependent binding of S100C to the N-terminal domain of Annexin I. *J. Biol. Chem.* 271: 719-725.

## SOURCE

Annexin VIII (R-18) is an affinity purified goat polyclonal antibody raised against a peptide mapping within an internal region of Annexin VIII of human origin.

## PRODUCT

Each vial contains 200 µg IgG in 1.0 ml of PBS with < 0.1% sodium azide and 0.1% gelatin.

Blocking peptide available for competition studies, sc-30767 P, (100 µg peptide in 0.5 ml PBS containing < 0.1% sodium azide and 0.2% BSA).

## STORAGE

Store at 4° C, **\*\*DO NOT FREEZE\*\***. Stable for one year from the date of shipment. Non-hazardous. No MSDS required.

## PROTOCOLS

See our web site at [www.scbt.com](http://www.scbt.com) or our catalog for detailed protocols and support products.

## APPLICATIONS

Annexin VIII (R-18) is recommended for detection of Annexin VIII of mouse, rat and human origin by Western Blotting (starting dilution 1:200, dilution range 1:100-1:1000), immunoprecipitation [1-2 µg per 100-500 µg of total protein (1 ml of cell lysate)], immunofluorescence (starting dilution 1:50, dilution range 1:50-1:500) and solid phase ELISA (starting dilution 1:30, dilution range 1:30-1:3000); also recommended for detection of ANXA8L1 and ANXA8L2 of human origin. Annexin VIII (R-18) is also recommended for detection of Annexin VIII in additional species, including equine, bovine and porcine.

Suitable for use as control antibody for Annexin VIII siRNA (m): sc-29693, Annexin VIII shRNA Plasmid (m): sc-29693-SH and Annexin VIII shRNA (m) Lentiviral Particles: sc-29693-V.

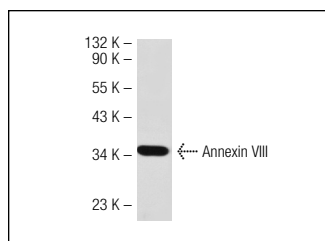
Molecular Weight of Annexin VIII: 36 kDa.

Positive Controls: JAR cell lysate: sc-2276, WI-38 whole cell lysate: sc-364260 or KNRK whole cell lysate: sc-2214.

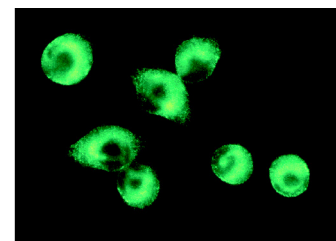
## RECOMMENDED SECONDARY REAGENTS

To ensure optimal results, the following support (secondary) reagents are recommended: 1) Western Blotting: use donkey anti-goat IgG-HRP: sc-2020 (dilution range: 1:2000-1:100,000) or Cruz Marker™ compatible donkey anti-goat IgG-HRP: sc-2033 (dilution range: 1:2000-1:5000), Cruz Marker™ Molecular Weight Standards: sc-2035, TBS Blotto A Blocking Reagent: sc-2333 and Western Blotting Luminol Reagent: sc-2048. 2) Immunoprecipitation: use Protein A/G PLUS-Agarose: sc-2003 (0.5 ml agarose/2.0 ml). 3) Immunofluorescence: use donkey anti-goat IgG-FITC: sc-2024 (dilution range: 1:100-1:400) or donkey anti-goat IgG-TR: sc-2783 (dilution range: 1:100-1:400) with UltraCruz™ Mounting Medium: sc-24941.

## DATA



Annexin VIII (R-18): sc-30767. Western blot analysis of Annexin VIII expression in KNRK whole cell lysate.



Annexin VIII (R-18): sc-30767. Immunofluorescence staining of methanol-fixed KNRK cells showing cytoplasmic localization.

## RESEARCH USE

For research use only, not for use in diagnostic procedures.

**MONOS**  
Satisfaction  
Guaranteed

Try **Annexin VIII (C-11): sc-514498** or **Annexin VIII (D-1): sc-271577**, our highly recommended monoclonal alternatives to Annexin VIII (R-18).