

PKC γ (N-16): sc-30793

BACKGROUND

Members of the protein kinase C (PKC) family play a key regulatory role in a variety of cellular functions including cell growth and differentiation, gene expression, hormone secretion and membrane function. PKCs were originally identified as serine/threonine protein kinases whose activity was dependent on calcium and phospholipids. Diacylglycerols (DAG) and tumor promoting phorbol esters bind to and activate PKC. PKCs can be subdivided into many different isoforms (α , β I, β II, γ , δ , ϵ , ζ , η , λ , ν , μ , ι , and θ). Patterns of expression for each PKC isoform differ among tissues and PKC family members exhibit clear differences in their cofactor dependencies. For instance, the kinase activities of PKC δ and ϵ are independent of Ca^{2+} . On the other hand, most of the other PKC members possess phorbol ester-binding activities and kinase activities.

REFERENCES

1. Takai, Y., et al. 1979. Calcium-dependent activation of a multifunctional protein kinase by membrane phospholipids. *J. Biol. Chem.* 254: 3692-3695.
2. Castagna, M., et al. 1982. Direct activation of calcium-activated, phospholipid-dependent protein kinase by tumor-promoting phorbol esters. *J. Biol. Chem.* 257: 7847-7851.

CHROMOSOMAL LOCATION

Genetic locus: PRKCG (human) mapping to 19q13.42; Prkcc (mouse) mapping to 7 A1.

SOURCE

PKC γ (N-16) is an affinity purified goat polyclonal antibody raised against a peptide mapping at the N-terminus of PKC γ of human origin.

PRODUCT

Each vial contains 200 μ g IgG in 1.0 ml of PBS with < 0.1% sodium azide and 0.1% gelatin.

Blocking peptide available for competition studies, sc-30793 P, (100 μ g peptide in 0.5 ml PBS containing < 0.1% sodium azide and 0.2% BSA).

APPLICATIONS

PKC γ (N-16) is recommended for detection of PKC γ of mouse, rat and human origin by Western Blotting (starting dilution 1:200, dilution range 1:100-1:1000), immunoprecipitation [1-2 μ g per 100-500 μ g of total protein (1 ml of cell lysate)], immunofluorescence (starting dilution 1:50, dilution range 1:50-1:500) and solid phase ELISA (starting dilution 1:30, dilution range 1:30-1:3000).

Suitable for use as control antibody for PKC γ siRNA (h): sc-36248, PKC γ siRNA (m): sc-36249, PKC γ shRNA Plasmid (h): sc-36248-SH, PKC γ shRNA Plasmid (m): sc-36249-SH, PKC γ shRNA (h) Lentiviral Particles: sc-36248-V and PKC γ shRNA (m) Lentiviral Particles: sc-36249-V.

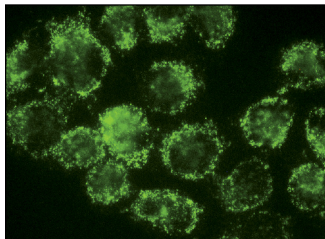
Molecular Weight of PKC : 76 kDa.

Positive Controls: PKC γ (h): 293T Lysate: sc-116200 or 3611-RF whole cell lysate: sc-2215.

RECOMMENDED SECONDARY REAGENTS

To ensure optimal results, the following support (secondary) reagents are recommended: 1) Western Blotting: use donkey anti-goat IgG-HRP: sc-2020 (dilution range: 1:2000-1:100,000) or Cruz Marker™ compatible donkey anti-goat IgG-HRP: sc-2033 (dilution range: 1:2000-1:5000), Cruz Marker™ Molecular Weight Standards: sc-2035, TBS Blotto A Blocking Reagent: sc-2333 and Western Blotting Luminol Reagent: sc-2048. 2) Immunoprecipitation: use Protein A/G PLUS-Agarose: sc-2003 (0.5 ml agarose/2.0 ml). 3) Immunofluorescence: use donkey anti-goat IgG-FITC: sc-2024 (dilution range: 1:100-1:400) or donkey anti-goat IgG-TR: sc-2783 (dilution range: 1:100-1:400) with UltraCruz™ Mounting Medium: sc-24941.

DATA



PKC γ (N-16): sc-30793. Immunofluorescence staining of methanol-fixed HeLa cells showing cytoplasmic localization.

STORAGE

Store at 4° C, **DO NOT FREEZE**. Stable for one year from the date of shipment. Non-hazardous. No MSDS required.

RESEARCH USE

For research use only, not for use in diagnostic procedures.

PROTOCOLS

See our web site at www.scbt.com or our catalog for detailed protocols and support products.


 MONOS
Satisfaction
Guaranteed

Try **PKC γ (C-4): sc-166385** or **PKC (A-3): sc-17769**, our highly recommended monoclonal alternatives to PKC γ (N-16). Also, for AC, HRP, FITC, PE, Alexa Fluor® 488 and Alexa Fluor® 647 conjugates, see **PKC γ (C-4): sc-166385**.