

# SH-PTP1 (G-20): sc-30810

## BACKGROUND

The steady state of protein tyrosyl phosphorylation in cells is regulated by the opposing action of tyrosine kinases and protein tyrosine phosphatases (PTPs). Several groups have independently identified a non-transmembrane PTP, designated SH-PTP1 (also known as PTP1C, HCP and SHP), which is primarily expressed in hematopoietic cells and characterized by the presence of two SH2 domains N-terminal to the PTP domain. SH2 domains generally mediate the association of regulatory molecules with specific phosphotyrosine-containing sites on autophosphorylated receptors, thereby controlling the initial interaction of receptors with these substrates. A second and much more widely expressed PTP with SH2 domains, SH-PTP2 (also designated PTP1D and Syp), has been identified. Strong sequence similarity between SH-PTP2 and the *Drosophila* gene corkscrew (CSW) and their similar patterns of expression suggest that SH-PTP2 is the human corkscrew homolog.

## REFERENCES

1. Chernoff, J., et al. 1990. Cloning of a cDNA for a major human protein-tyrosine-phosphatase. Proc. Natl. Acad. Sci. USA 87: 2735-2739.
2. Shen, S., et al. 1991. A protein-tyrosine phosphatase with sequence similarity to the SH2 domain of the protein-tyrosine kinases. Nature 352: 736-739.
3. Plutzky, J., et al. 1992. Isolation of a Src homology 2-containing tyrosine phosphatase. Proc. Natl. Acad. Sci. USA 89: 1123-1127.
4. Freeman, R.M. Jr., et al. 1992. Identification of a human Src homology 2-containing protein-tyrosine-phosphatase: a putative homolog of *Drosophila* corkscrew. Proc. Natl. Acad. Sci. USA 89: 11239-11243.
5. Yi, T., et al. 1992. Protein tyrosine phosphatase containing SH2 domains: characterization, preferential expression in hematopoietic cells, and localization to human chromosome 12p12-p13. Mol. Cell. Biol. 12: 836-846.
6. Feng, G., et al. 1993. SH2-containing phosphotyrosine phosphatase as a target of protein-tyrosine kinases. Science 259: 1607-1611.

## CHROMOSOMAL LOCATION

Genetic locus: PTPN6 (human) mapping to 12p13.31; Ptpn6 (mouse) mapping to 6 F2.

## SOURCE

SH-PTP1 (G-20) is an affinity purified goat polyclonal antibody raised against a peptide mapping near the C-terminus of SH-PTP1 of human origin.

## PRODUCT

Each vial contains 200 µg IgG in 1.0 ml of PBS with < 0.1% sodium azide and 0.1% gelatin.

Blocking peptide available for competition studies, sc-30810 P, (100 µg peptide in 0.5 ml PBS containing < 0.1% sodium azide and 0.2% BSA).

## STORAGE

Store at 4° C, **\*\*DO NOT FREEZE\*\***. Stable for one year from the date of shipment. Non-hazardous. No MSDS required.

## APPLICATIONS

SH-PTP1 (G-20) is recommended for detection of SH-PTP1 of mouse, rat and human origin by Western Blotting (starting dilution 1:200, dilution range 1:100-1:1000), immunoprecipitation [1-2 µg per 100-500 µg of total protein (1 ml of cell lysate)], immunofluorescence (starting dilution 1:50, dilution range 1:50-1:500) and solid phase ELISA (starting dilution 1:30, dilution range 1:30-1:3000).

SH-PTP1 (G-20) is also recommended for detection of SH-PTP1 in additional species, including equine, canine, bovine and porcine.

Suitable for use as control antibody for SH-PTP1 siRNA (h): sc-29478, SH-PTP1 siRNA (m): sc-29479, SH-PTP1 shRNA Plasmid (h): sc-29478-SH, SH-PTP1 shRNA Plasmid (m): sc-29479-SH, SH-PTP1 shRNA (h) Lentiviral Particles: sc-29478-V and SH-PTP1 shRNA (m) Lentiviral Particles: sc-29479-V.

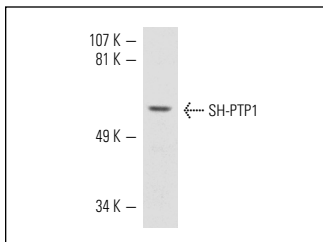
Molecular Weight of SH-PTP1: 68 kDa.

Positive Controls: HL-60 whole cell lysate: sc-2209, Jurkat whole cell lysate: sc-2204 or U-937 cell lysate: sc-2239.

## RECOMMENDED SECONDARY REAGENTS

To ensure optimal results, the following support (secondary) reagents are recommended: 1) Western Blotting: use donkey anti-goat IgG-HRP: sc-2020 (dilution range: 1:2000-1:100,000) or Cruz Marker™ compatible donkey anti-goat IgG-HRP: sc-2033 (dilution range: 1:2000-1:5000), Cruz Marker™ Molecular Weight Standards: sc-2035, TBS Blotto A Blocking Reagent: sc-2333 and Western Blotting Luminol Reagent: sc-2048. 2) Immunoprecipitation: use Protein A/G PLUS-Agarose: sc-2003 (0.5 ml agarose/2.0 ml). 3) Immunofluorescence: use donkey anti-goat IgG-FITC: sc-2024 (dilution range: 1:100-1:400) or donkey anti-goat IgG-TR: sc-2783 (dilution range: 1:100-1:400) with UltraCruz™ Mounting Medium: sc-24941.

## DATA



SH-PTP1 (G-20): sc-30810. Western blot analysis of SH-PTP1 expression in HL-60 whole cell lysate.

## RESEARCH USE

For research use only, not for use in diagnostic procedures.

**MONOS**  
Satisfaction  
Guaranteed

Try **SH-PTP1 (D-11): sc-7289** or **SH-PTP1 (D-7): sc-271329**, our highly recommended monoclonal alternatives to SH-PTP1 (G-20). Also, for AC, HRP, FITC, PE, Alexa Fluor® 488 and Alexa Fluor® 647 conjugates, see **SH-PTP1 (D-11): sc-7289**.