

CRALBP (L-19): sc-30823

BACKGROUND

11-*cis*-retinal, the universal chromophore of the vertebrate retina, is coupled to opsins in both rod and cone photoreceptor cells and is photoisomerized to all-*trans*-retinal by light. This conversion is inhibited when 11-*cis*-retinal is in a complex with cellular retinaldehyde-binding protein (CRALBP). CRALBP may play a role in the vertebrate visual process as a substrate-routing protein, influencing the enzymatic partitioning of 11-*cis*-retinol at a key branch point in the visual cycle. Human CRALBP maps to chromosome 15q26 and encodes a 316 amino acid protein with a molecular weight of 36 kDa. CRALBP is not expressed in photoreceptors and is abundant in the retinal pigment epithelium (RPE) and Muller cells of the neuroretina, where it carries 11-*cis*-retinol and 11-*cis*-retinaldehyde. Mutations in the human CRALBP gene cause retinal pathology and delayed dark adaptation. CRALBP knockout mice have a delayed response in rhodopsin regeneration, 11-*cis*-retinal production and dark adaptation after illumination.

CHROMOSOMAL LOCATION

Genetic locus: RLBP1 (human) mapping to 15q26.1; Rlbp1 (mouse) mapping to 7 D3.

SOURCE

CRALBP (L-19) is an affinity purified goat polyclonal antibody raised against a peptide mapping within an internal region of CRALBP of human origin.

PRODUCT

Each vial contains 200 µg IgG in 1.0 ml of PBS with < 0.1% sodium azide and 0.1% gelatin.

Blocking peptide available for competition studies, sc-30823 P, (100 µg peptide in 0.5 ml PBS containing < 0.1% sodium azide and 0.2% BSA).

APPLICATIONS

CRALBP (L-19) is recommended for detection of CRALBP of mouse, rat and human origin by Western Blotting (starting dilution 1:200, dilution range 1:100-1:1000), immunoprecipitation [1-2 µg per 100-500 µg of total protein (1 ml of cell lysate)], immunofluorescence (starting dilution 1:50, dilution range 1:50-1:500) and solid phase ELISA (starting dilution 1:30, dilution range 1:30-1:3000).

CRALBP (L-19) is also recommended for detection of CRALBP in additional species, including canine, bovine, porcine and avian.

Suitable for use as control antibody for CRALBP siRNA (h): sc-40428, CRALBP siRNA (m): sc-40429, CRALBP shRNA Plasmid (h): sc-40428-SH, CRALBP shRNA Plasmid (m): sc-40429-SH, CRALBP shRNA (h) Lentiviral Particles: sc-40428-V and CRALBP shRNA (m) Lentiviral Particles: sc-40429-V.

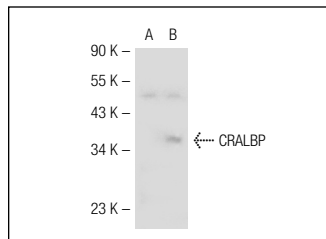
Molecular Weight of CRALBP: 36 kDa.

Positive Controls: CRALBP (m): 293T Lysate: sc-126665 or rat eye extract: sc-364805.

RECOMMENDED SECONDARY REAGENTS

To ensure optimal results, the following support (secondary) reagents are recommended: 1) Western Blotting: use donkey anti-goat IgG-HRP: sc-2020 (dilution range: 1:2000-1:100,000) or Cruz Marker™ compatible donkey anti-goat IgG-HRP: sc-2033 (dilution range: 1:2000-1:5000), Cruz Marker™ Molecular Weight Standards: sc-2035, TBS Blotto A Blocking Reagent: sc-2333 and Western Blotting Luminol Reagent: sc-2048. 2) Immunoprecipitation: use Protein A/G PLUS-Agarose: sc-2003 (0.5 ml agarose/2.0 ml). 3) Immunofluorescence: use donkey anti-goat IgG-FITC: sc-2024 (dilution range: 1:100-1:400) or donkey anti-goat IgG-TR: sc-2783 (dilution range: 1:100-1:400) with UltraCruz™ Mounting Medium: sc-24941.

DATA



CRALBP (L-19): sc-30823. Western blot analysis of CRALBP expression in non-transfected: sc-117752 (A) and mouse CRALBP transfected: sc-126665 (B) 293T whole cell lysates.

STORAGE

Store at 4° C, **DO NOT FREEZE**. Stable for one year from the date of shipment. Non-hazardous. No MSDS required.

RESEARCH USE

For research use only, not for use in diagnostic procedures.

PROTOCOLS

See our web site at www.scbt.com or our catalog for detailed protocols and support products.



Try **CRALBP (G-9): sc-376082** or **CRALBP (B2): sc-59487**, our highly recommended monoclonal alternatives to CRALBP (L-19).