

Syndecan-3 (V-14): sc-30883

BACKGROUND

Syndecans are type I integral membrane proteoglycans that contain both chondroitin sulfate and heparan sulfate groups. Syndecans are involved in cell-extracellular matrix adhesion and growth factor binding. Syndecan-1 (SYND1, also called CD138) is an 85-92 kDa extracellular matrix receptor, which binds to collagens, fibronectin and thrombospondin. Syndecan-1 and Syndecan-3 (also designated N-Syndecan) interact with MK (midkine), a growth/differentiation factor involved in embryogenesis of the central nervous system. Syndecan-2 (also designated fibroglycan) is highly expressed at areas of high morphogenetic activity, such as epithelial-mesenchymal interfaces and the prechondrogenic and preosteogenic mesenchymal condensations. Syndecan-4 (also designated amphiglycan or ryudocan) functions cooperatively with integrins in the processes of cell spreading, focal adhesion assembly and actin stress fiber assembly.

CHROMOSOMAL LOCATION

Genetic locus: SDC3 (human) mapping to 1p35.2; Sdc3 (mouse) mapping to 4 D2.3.

SOURCE

Syndecan-3 (V-14) is an affinity purified goat polyclonal antibody raised against a peptide mapping within a C-terminal extracellular domain of Syndecan-3 of human origin.

PRODUCT

Each vial contains 200 µg IgG in 1.0 ml of PBS with < 0.1% sodium azide and 0.1% gelatin.

Blocking peptide available for competition studies, sc-30883 P, (100 µg peptide in 0.5 ml PBS containing < 0.1% sodium azide and 0.2% BSA).

STORAGE

Store at 4° C, ****DO NOT FREEZE****. Stable for one year from the date of shipment. Non-hazardous. No MSDS required.

APPLICATIONS

Syndecan-3 (V-14) is recommended for detection of Syndecan-3 of mouse, rat and human origin by Western Blotting (starting dilution 1:200, dilution range 1:100-1:1000), immunoprecipitation [1-2 µg per 100-500 µg of total protein (1 ml of cell lysate)], immunofluorescence (starting dilution 1:50, dilution range 1:50-1:500) and solid phase ELISA (starting dilution 1:30, dilution range 1:30-1:3000).

Suitable for use as control antibody for Syndecan-3 siRNA (h): sc-41047, Syndecan-3 siRNA (m): sc-41048, Syndecan-3 shRNA Plasmid (h): sc-41047-SH, Syndecan-3 shRNA Plasmid (m): sc-41048-SH, Syndecan-3 shRNA (h) Lentiviral Particles: sc-41047-V and Syndecan-3 shRNA (m) Lentiviral Particles: sc-41048-V.

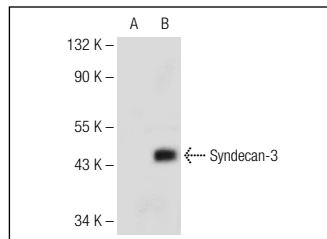
Molecular Weight of Syndecan-3: 50-55/120 kDa.

Positive Controls: Syndecan-3 (h2): 293T Lysate: sc-176304, SH-SY5Y cell lysate: sc-3812 or A549 cell lysate: sc-2413.

RECOMMENDED SECONDARY REAGENTS

To ensure optimal results, the following support (secondary) reagents are recommended: 1) Western Blotting: use donkey anti-goat IgG-HRP: sc-2020 (dilution range: 1:2000-1:100,000) or Cruz Marker™ compatible donkey anti-goat IgG-HRP: sc-2033 (dilution range: 1:2000-1:5000), Cruz Marker™ Molecular Weight Standards: sc-2035, TBS Blotto A Blocking Reagent: sc-2333 and Western Blotting Luminol Reagent: sc-2048. 2) Immunoprecipitation: use Protein A/G PLUS-Agarose: sc-2003 (0.5 ml agarose/2.0 ml). 3) Immunofluorescence: use donkey anti-goat IgG-FITC: sc-2024 (dilution range: 1:100-1:400) or donkey anti-goat IgG-TR: sc-2783 (dilution range: 1:100-1:400) with UltraCruz™ Mounting Medium: sc-24941.

DATA



Syndecan-3 (V-14): sc-30883. Western blot analysis of Syndecan-3 expression in non-transfected: sc-117752 (A) and human Syndecan-3 transfected: sc-176304 (B) 293T whole cell lysates.

RESEARCH USE

For research use only, not for use in diagnostic procedures.

PROTOCOLS

See our web site at www.scbt.com or our catalog for detailed protocols and support products.



Try **Syndecan-3 (G-2): sc-398194**, our highly recommended monoclonal alternative to Syndecan-3 (V-14).