

CENP-E (S-20): sc-30941

BACKGROUND

A replicated chromosome includes two kinetochores that control chromosome segregation during mitosis. Centromere protein E, CENP-E, is a kinetochore motor protein that specifies kinetochore binding in mitosis. Both CENP-E and CENP-F are expressed during mitosis, where they mediate the G₂ to M phase checkpoint. CENP-E is also expressed in high levels during meiosis I and meiosis II, where it localizes to the fibrous corona and outer plate of kinetochores on the meiotic chromosomes. CENP-E co-localizes with hBUBR1, a BUB-related kinase until mid-anaphase. After the first polar body emission, CENP-E localizes to the spindle-midzone, separating from hBUBR1 after mid-anaphase.

REFERENCES

1. Rieder, C.L., et al. 1998. The vertebrate cell kinetochore and its roles during mitosis. *Trends Cell Biol.* 8: 310-318.
2. Chan, G.K., et al. 1998. Characterization of the kinetochore binding domain of CENP-E reveals interactions with the kinetochore proteins CENP-F and hBUBR1. *J. Cell Biol.* 143: 49-63.

CHROMOSOMAL LOCATION

Genetic locus: CENPE (human) mapping to 4q24; Cenpe (mouse) mapping to 3 G3.

SOURCE

CENP-E (S-20) is an affinity purified goat polyclonal antibody raised against a peptide mapping near the N-terminus of CENP-E of human origin.

PRODUCT

Each vial contains 200 µg IgG in 1.0 ml of PBS with < 0.1% sodium azide and 0.1% gelatin.

Blocking peptide available for competition studies, sc-30940 P, (100 µg peptide in 0.5 ml PBS containing < 0.1% sodium azide and 0.2% BSA).

APPLICATIONS

CENP-E (S-20) is recommended for detection of CENP-E of mouse, rat and human origin by Western Blotting (starting dilution 1:200, dilution range 1:100-1:1000), immunoprecipitation [1-2 µg per 100-500 µg of total protein (1 ml of cell lysate)], immunofluorescence (starting dilution 1:50, dilution range 1:50-1:500), immunohistochemistry (including paraffin-embedded sections) (starting dilution 1:50, dilution range 1:50-1:500) and solid phase ELISA (starting dilution 1:30, dilution range 1:30-1:3000).

CENP-E (S-20) is also recommended for detection of CENP-E in additional species, including equine, canine, bovine and porcine.

Suitable for use as control antibody for CENP-E siRNA (h): sc-37561, CENP-E siRNA (m): sc-37562, CENP-E shRNA Plasmid (h): sc-37561-SH, CENP-E shRNA Plasmid (m): sc-37562-SH, CENP-E shRNA (h) Lentiviral Particles: sc-37561-V and CENP-E shRNA (m) Lentiviral Particles: sc-37562-V.

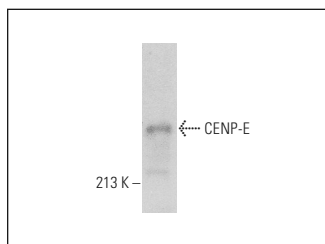
Molecular Weight of CENP-E: 312 kDa.

Positive Controls: HeLa nuclear extract: sc-2120.

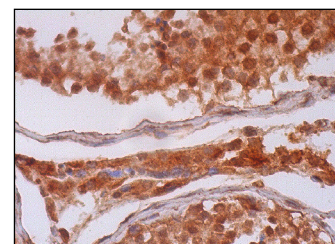
RECOMMENDED SECONDARY REAGENTS

To ensure optimal results, the following support (secondary) reagents are recommended: 1) Western Blotting: use donkey anti-goat IgG-HRP: sc-2020 (dilution range: 1:2000-1:100,000) or Cruz Marker™ compatible donkey anti-goat IgG-HRP: sc-2033 (dilution range: 1:2000-1:5000), Cruz Marker™ Molecular Weight Standards: sc-2035, TBS Blotto A Blocking Reagent: sc-2333 and Western Blotting Luminol Reagent: sc-2048. 2) Immunoprecipitation: use Protein A/G PLUS-Agarose: sc-2003 (0.5 ml agarose/2.0 ml). 3) Immunofluorescence: use donkey anti-goat IgG-FITC: sc-2024 (dilution range: 1:100-1:400) or donkey anti-goat IgG-TR: sc-2783 (dilution range: 1:100-1:400) with UltraCruz™ Mounting Medium: sc-24941. 4) Immunohistochemistry: use ImmunoCruz™: sc-2053 or ABC: sc-2023 goat IgG Staining Systems.

DATA



CENP-E (S-20): sc-30941. Western blot analysis of CENP-E expression in HeLa nuclear extract.



CENP-E (S-20): sc-30941. Immunoperoxidase staining of formalin fixed, paraffin-embedded human testis tissue showing nuclear and cytoplasmic staining of cells in seminiferous ducts and Leydig cells.

STORAGE

Store at 4° C, **DO NOT FREEZE**. Stable for one year from the date of shipment. Non-hazardous. No MSDS required.

RESEARCH USE

For research use only, not for use in diagnostic procedures.

PROTOCOLS

See our web site at www.scbt.com or our catalog for detailed protocols and support products.

MONOS
Satisfaction
Guaranteed

Try **CENP-E (C-5): sc-376685** or **CENP-E (mAb177): sc-47745**, our highly recommended monoclonal alternatives to CENP-E (S-20).