

Rab 6 (C-19): sc-310

BACKGROUND

The Ras-related superfamily of guanine nucleotide binding proteins, which includes the R-Ras, Rap, Ral/Rec and Rho/Rab subfamilies, exhibit 30-60% homology with Ras p21. Accumulating data suggests an important role for Rab proteins, either in endocytosis or in biosynthetic protein transport. The transport of newly synthesized proteins from the endoplasmic reticulum to various stacks of the Golgi complex and to secretory vesicles involves, at each stage, the movement of carrier vesicles; a process that appears to involve Rab protein function. The possibility that Rab proteins might also direct the exocytosis from secretory vesicles to the plasma membrane is supported by the observation that in yeast, the Sec4 protein, which is 40% homologous to Rab proteins, is associated with secretory vesicles. At least eight members of the Rab subfamily have been identified, each of which is found at a particular stage of a membrane transport pathway. Rab 6, also known as RAB6B, RAB6A or RAB6A, is a 208 amino acid protein that is ubiquitously expressed and is a member of the small GTPase superfamily.

SOURCE

Rab 6 (C-19) is an affinity purified rabbit polyclonal antibody raised against a peptide mapping within the C-terminus of Rab 6 of human origin.

PRODUCT

Each vial contains 200 µg IgG in 1.0 ml of PBS with < 0.1% sodium azide and 0.1% gelatin.

Blocking peptide available for competition studies, sc-310 P, (100 µg peptide in 0.5 ml PBS containing < 0.1% sodium azide and 0.2% BSA).

APPLICATIONS

Rab 6 (C-19) is recommended for detection of Rab 6 of mouse, rat and human origin by Western Blotting (starting dilution 1:200, dilution range 1:100-1:1000), immunoprecipitation [1-2 µg per 100-500 µg of total protein (1 ml of cell lysate)], immunofluorescence (starting dilution 1:50, dilution range 1:50-1:500), immunohistochemistry (including paraffin-embedded sections) (starting dilution 1:50, dilution range 1:50-1:500) and solid phase ELISA (starting dilution 1:30, dilution range 1:30-1:3000).

Rab 6 (C-19) is also recommended for detection of Rab 6 in additional species, including equine, canine, bovine, porcine and avian.

Suitable for use as control antibody for Rab 6 siRNA (h): sc-44063, Rab 6 siRNA (m): sc-44064, Rab 6 shRNA Plasmid (h): sc-44063-SH, Rab 6 shRNA Plasmid (m): sc-44064-SH, Rab 6 shRNA (h) Lentiviral Particles: sc-44063-V and Rab 6 shRNA (m) Lentiviral Particles: sc-44064-V.

Molecular Weight of Rab 6: 25 kDa.

Positive Controls: NIH/3T3 whole cell lysate: sc-2210.

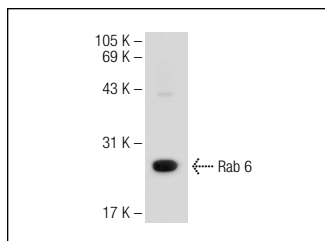
STORAGE

Store at 4° C, **DO NOT FREEZE**. Stable for one year from the date of shipment. Non-hazardous. No MSDS required.

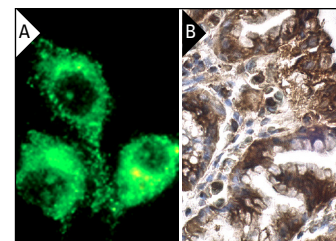
RESEARCH USE

For research use only, not for use in diagnostic procedures.

DATA



Rab 6 (C-19): sc-310. Western blot analysis of Rab 6 expression in NIH/3T3 whole cell lysate.



Rab 6 (C-19): sc-310. Immunofluorescence staining of methanol-fixed NIH/3T3 cells showing cytoplasmic localization (A). Immunoperoxidase staining of formalin fixed, paraffin-embedded human stomach tissue showing cytoplasmic staining of glandular cells (B).

SELECT PRODUCT CITATIONS

- Ivessa, N.E., et al. 1997. Functional protein prenylation is required for the brefeldin A-dependent retrograde transport from the Golgi apparatus to the endoplasmic reticulum. *J. Biol. Chem.* 272: 20828-20834.
- El-Achkar, T.M., et al. 2006. Sepsis induces changes in the expression and distribution of Toll-like receptor 4 in the rat kidney. *Am. J. Physiol. Renal Physiol.* 290: F1034-F1043.
- Zhang, Y., et al. 2007. Intracellular localization of type III-delivered pseudomonas ExoS with endosome vesicles. *J. Biol. Chem.* 282: 13022-13032.
- Lotz, G.P., et al. 2008. A novel HSP90 chaperone complex regulates intracellular vesicle transport. *J. Cell Sci.* 121: 717-723.
- Huang, W., et al. 2009. Cell type-specific and light-dependent expression of Rab1 and Rab6 GTPases in mammalian retinas. *Vis. Neurosci.* 26: 443-452.
- Popoff, V., et al. 2009. Analysis of articulation between clathrin and retromer in retrograde sorting on early endosomes. *Traffic* 10: 1868-1880.
- Kano, F., et al. 2009. Yip1A regulates the COPI-independent retrograde transport from the Golgi complex to the ER. *J. Cell Sci.* 122: 2218-2227.
- Barney, R.J., et al. 2010. Synthesis and biological evaluation of a series of aromatic bisphosphonates. *Bioorg. Med. Chem.* 18: 7212-7220.
- Leichner, G.S., et al. 2011. Metabolically regulated endoplasmic reticulum-associated degradation of 3-hydroxy-3-methylglutaryl-CoA reductase: evidence for requirement of a geranylgeranylated protein. *J. Biol. Chem.* 286: 32150-32161.


 MONOS
Satisfation
Guaranteed

Try **Rab 6 (3G3): sc-293221** or **Rab 6A (38-TB): sc-81913**, our highly recommended monoclonal alternatives to Rab 6 (C-19).