

# paxillin (K-20): sc-31008

## BACKGROUND

Paxillin is a focal adhesion phosphoprotein that is localized to the cytoskeleton. Phosphorylation of paxillin has been shown to occur in response to PDGF treatment, v-Src transformation or cross-linking of integrins. FAK (focal adhesion kinase) and PYK2 have been shown to phosphorylate paxillin. FAK phosphorylates paxillin specifically on Tyr 118 *in vitro*. However, FAK phosphorylation does not seem to be required for the recruitment of paxillin to cell adhesion sites. Paxillin may play a role in signal transduction, regulation of cell morphology and the recruitment of structural and signaling molecules to focal adhesions. It has been shown that the amount of paxillin is reduced in mitotic cells by proteolytic downregulation and that paxillin is alternatively phosphorylated on serine rather than on tyrosine and serine during mitosis.

## REFERENCES

1. Graham, I.L., et al. 1994. Complement receptor 3 (CR3, Mac-1, Integrin  $\alpha$ M $\beta$ 2, CD11b/CD18) is required for tyrosine phosphorylation of paxillin in adherent and nonadherent neutrophils. *J. Cell Biol.* 127: 1139-1147.
2. Salgia, R., et al. 1995. Molecular cloning of human paxillin, a focal adhesion protein phosphorylated by P210BCR/ABL. *J. Biol. Chem.* 270: 5039-5047.

## CHROMOSOMAL LOCATION

Genetic locus: PXN (human) mapping to 12q24.23; Pxn (mouse) mapping to 5 F.

## SOURCE

paxillin (K-20) is an affinity purified goat polyclonal antibody raised against a peptide mapping near the N-terminus of paxillin of human origin.

## PRODUCT

Each vial contains 200  $\mu$ g IgG in 1.0 ml of PBS with < 0.1% sodium azide and 0.1% gelatin.

Blocking peptide available for competition studies, sc-31008 P, (100  $\mu$ g peptide in 0.5 ml PBS containing < 0.1% sodium azide and 0.2% BSA).

## APPLICATIONS

paxillin (K-20) is recommended for detection of  $\alpha$ ,  $\beta$  and  $\gamma$  isoforms of paxillin of mouse, rat and human origin by Western Blotting (starting dilution 1:200, dilution range 1:100-1:1000), immunoprecipitation [1-2  $\mu$ g per 100-500  $\mu$ g of total protein (1 ml of cell lysate)], immunofluorescence (starting dilution 1:50, dilution range 1:50-1:500) and solid phase ELISA (starting dilution 1:30, dilution range 1:30-1:3000).

paxillin (K-20) is also recommended for detection of  $\alpha$ ,  $\beta$ ,  $\gamma$  isoforms of paxillin in additional species, including equine, canine and avian.

Suitable for use as control antibody for paxillin siRNA (h): sc-29439, paxillin siRNA (m): sc-36197, paxillin shRNA Plasmid (h): sc-29439-SH, paxillin shRNA Plasmid (m): sc-36197-SH, paxillin shRNA (h) Lentiviral Particles: sc-29439-V and paxillin shRNA (m) Lentiviral Particles: sc-36197-V.

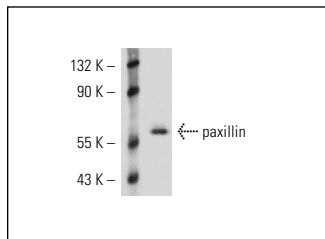
Molecular Weight of paxillin: 68 kDa.

Positive Controls: CCD-1064Sk cell lysate: sc-2263, ECV304 cell lysate: sc-2269 or HISM cell lysate: sc-2229.

## RECOMMENDED SECONDARY REAGENTS

To ensure optimal results, the following support (secondary) reagents are recommended: 1) Western Blotting: use donkey anti-goat IgG-HRP: sc-2020 (dilution range: 1:2000-1:100,000) or Cruz Marker™ compatible donkey anti-goat IgG-HRP: sc-2033 (dilution range: 1:2000-1:5000), Cruz Marker™ Molecular Weight Standards: sc-2035, TBS Blotto A Blocking Reagent: sc-2333 and Western Blotting Luminol Reagent: sc-2048. 2) Immunoprecipitation: use Protein A/G PLUS-Agarose: sc-2003 (0.5 ml agarose/2.0 ml). 3) Immunofluorescence: use donkey anti-goat IgG-FITC: sc-2024 (dilution range: 1:100-1:400) or donkey anti-goat IgG-TR: sc-2783 (dilution range: 1:100-1:400) with UltraCruz™ Mounting Medium: sc-24941.

## DATA



paxillin (K-20): sc-31008. Western blot analysis of paxillin expression in ECV304 whole cell lysate.

## STORAGE

Store at 4° C, \*\*DO NOT FREEZE\*\*. Stable for one year from the date of shipment. Non-hazardous. No MSDS required.

## RESEARCH USE

For research use only, not for use in diagnostic procedures.

## PROTOCOLS

See our web site at [www.scbt.com](http://www.scbt.com) or our catalog for detailed protocols and support products.


 MONOS  
Satisfaction  
Guaranteed

Try **paxillin (B-2): sc-365379** or **paxillin (C-1): sc-373880**, our highly recommended monoclonal alternatives to paxillin (K-20). Also, for AC, HRP, FITC, PE, Alexa Fluor® 488 and Alexa Fluor® 647 conjugates, see **paxillin (B-2): sc-365379**.