

E-cadherin (K-20): sc-31021

BACKGROUND

Cadherins comprise a family of Ca^{2+} -dependent adhesion molecules that function to mediate cell-cell binding critical to the maintenance of tissue structure and morphogenesis. Members of this family of adhesion proteins include rat cadherin-K (and its human homolog, cadherin-6), R-cadherin, B-cadherin, E/P-cadherin and cadherin-5. The classical cadherins, E-, N- and P-cadherin, consist of large extracellular domains characterized by a series of five homologous NH_2 -terminal repeats. The most distal of these cadherins is thought to be responsible for binding specificity, transmembrane domains and carboxy-terminal intracellular domains. The relatively short intracellular domains interact with a variety of cytoplasmic proteins, such as β -catenin, to regulate cadherin function.

CHROMOSOMAL LOCATION

Genetic locus: CDH1 (human) mapping to 16q22.1; Cdh1 (mouse) mapping to 8 D3.

SOURCE

E-cadherin (K-20) is an affinity purified goat polyclonal antibody raised against a peptide mapping within an extracellular domain of E-cadherin of human origin.

PRODUCT

Each vial contains 200 μg IgG in 1.0 ml of PBS with < 0.1% sodium azide and 0.1% gelatin.

Blocking peptide available for competition studies, sc-31021 P, (100 μg peptide in 0.5 ml PBS containing < 0.1% sodium azide and 0.2% BSA).

RESEARCH USE

For research use only, not for use in diagnostic procedures.

APPLICATIONS

E-cadherin (K-20) is recommended for detection of E-cadherin of mouse, rat and human origin by Western Blotting (starting dilution 1:200, dilution range 1:100-1:1000), immunoprecipitation [1-2 μg per 100-500 μg of total protein (1 ml of cell lysate)], immunofluorescence (starting dilution 1:50, dilution range 1:50-1:500) and solid phase ELISA (starting dilution 1:30, dilution range 1:30-1:3000).

E-cadherin (K-20) is also recommended for detection of E-cadherin in additional species, including equine, bovine and porcine.

Suitable for use as control antibody for E-cadherin siRNA (h): sc-35242, E-cadherin siRNA (m): sc-35243, E-cadherin shRNA Plasmid (h): sc-35242-SH, E-cadherin shRNA Plasmid (m): sc-35243-SH, E-cadherin shRNA (h) Lentiviral Particles: sc-35242-V and E-cadherin shRNA (m) Lentiviral Particles: sc-35243-V.

Molecular Weight of E-cadherin precursor: 135 kDa.

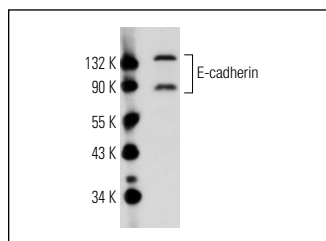
Molecular Weight of mature E-cadherin: 120/80 kDa.

Positive Controls: ZR-75-1 cell lysate: sc-2241, LNCaP cell lysate: sc-2231 or MCF7 whole cell lysate: sc-2206.

RECOMMENDED SECONDARY REAGENTS

To ensure optimal results, the following support (secondary) reagents are recommended: 1) Western Blotting: use donkey anti-goat IgG-HRP: sc-2020 (dilution range: 1:2000-1:100,000) or Cruz Marker™ compatible donkey anti-goat IgG-HRP: sc-2033 (dilution range: 1:2000-1:5000), Cruz Marker™ Molecular Weight Standards: sc-2035, TBS Blotto A Blocking Reagent: sc-2333 and Western Blotting Luminol Reagent: sc-2048. 2) Immunoprecipitation: use Protein A/G PLUS-Agarose: sc-2003 (0.5 ml agarose/2.0 ml). 3) Immunofluorescence: use donkey anti-goat IgG-FITC: sc-2024 (dilution range: 1:100-1:400) or donkey anti-goat IgG-TR: sc-2783 (dilution range: 1:100-1:400) with UltraCruz™ Mounting Medium: sc-24941.

DATA



E-cadherin (K-20): sc-31021. Western blot analysis of E-cadherin expression in LNCaP whole cell lysate.

STORAGE

Store at 4° C, ****DO NOT FREEZE****. Stable for one year from the date of shipment. Non-hazardous. No MSDS required.

PROTOCOLS

See our web site at www.scbt.com or our catalog for detailed protocols and support products.

MONOS
Satisfaction
Guaranteed

Try **E-cadherin (G-10): sc-8426** or **E-cadherin (67A4): sc-21791**, our highly recommended monoclonal alternatives to E-cadherin (K-20). Also, for AC, HRP, FITC, PE, Alexa Fluor® 488 and Alexa Fluor® 647 conjugates, see **E-cadherin (G-10): sc-8426**.