

NCAM-L1 (N-14): sc-31032

BACKGROUND

Cell adhesion molecules are a family of closely related cell surface glycoproteins involved in cell-cell interactions during growth and are thought to play an important role in embryogenesis and development. Neuronal cell adhesion molecule (NCAM) expression is observed in a variety of human tumors, including neuroblastomas, rhabdomyosarcomas, Wilm's tumors, Ewing's sarcomas and some primitive myeloid malignancies. The NCAM-L1 adhesion molecule (CD171) plays an important role in axon guidance and cell migration in the nervous system. The presence of NCAM-L1 might contribute to tumor progression by promoting cell adhesion and migration and is known to be expressed by neurons, neuroblastomas and other malignant tumors.

CHROMOSOMAL LOCATION

Genetic locus: L1CAM (human) mapping to Xq28; L1cam (mouse) mapping to X A7.3.

SOURCE

NCAM-L1 (N-14) is an affinity purified goat polyclonal antibody raised against a peptide mapping within an N-terminal extracellular domain of NCAM-L1 of human origin.

PRODUCT

Each vial contains 200 µg IgG in 1.0 ml of PBS with < 0.1% sodium azide and 0.1% gelatin.

Blocking peptide available for competition studies, sc-31032 P, (100 µg peptide in 0.5 ml PBS containing < 0.1% sodium azide and 0.2% BSA).

APPLICATIONS

NCAM-L1 (N-14) is recommended for detection of NCAM-L1 of mouse, rat and human origin by Western Blotting (starting dilution 1:200, dilution range 1:100-1:1000), immunoprecipitation [1-2 µg per 100-500 µg of total protein (1 ml of cell lysate)], immunofluorescence (starting dilution 1:50, dilution range 1:50-1:500), immunohistochemistry (including paraffin-embedded sections) (starting dilution 1:50, dilution range 1:50-1:500) and solid phase ELISA (starting dilution 1:30, dilution range 1:30-1:3000).

NCAM-L1 (N-14) is also recommended for detection of NCAM-L1 in additional species, including equine, canine, bovine and porcine.

Suitable for use as control antibody for NCAM-L1 siRNA (h): sc-43172, NCAM-L1 siRNA (m): sc-43173, NCAM siRNA (r): sc-156119, NCAM-L1 shRNA Plasmid (h): sc-43172-SH, NCAM-L1 shRNA Plasmid (m): sc-43173-SH, NCAM shRNA Plasmid (r): sc-156119-SH, NCAM-L1 shRNA (h) Lentiviral Particles: sc-43172-V, NCAM-L1 shRNA (m) Lentiviral Particles: sc-43173-V and NCAM shRNA (r) Lentiviral Particles: sc-156119-V.

Molecular Weight of NCAM-L1 proteolytically cleaved form: 85 kDa.

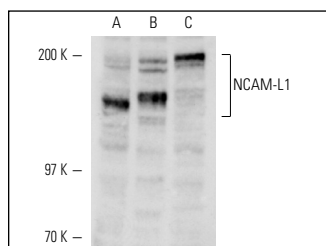
Molecular Weight of full length NCAM-L1 isoforms: 140/180/220 kDa.

Positive Controls: SH-SY5Y cell lysate: sc-3812, IMR-32 cell lysate: sc-2409 or HeLa whole cell lysate: sc-2200.

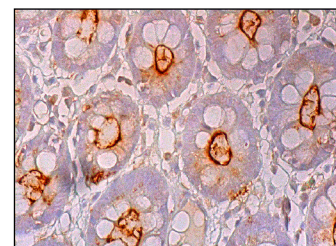
RECOMMENDED SECONDARY REAGENTS

To ensure optimal results, the following support (secondary) reagents are recommended: 1) Western Blotting: use donkey anti-goat IgG-HRP: sc-2020 (dilution range: 1:2000-1:100,000) or Cruz Marker™ compatible donkey anti-goat IgG-HRP: sc-2033 (dilution range: 1:2000-1:5000), Cruz Marker™ Molecular Weight Standards: sc-2035, TBS Blotto A Blocking Reagent: sc-2333 and Western Blotting Luminol Reagent: sc-2048. 2) Immunoprecipitation: use Protein A/G PLUS-Agarose: sc-2003 (0.5 ml agarose/2.0 ml). 3) Immunofluorescence: use donkey anti-goat IgG-FITC: sc-2024 (dilution range: 1:100-1:400) or donkey anti-goat IgG-TR: sc-2783 (dilution range: 1:100-1:400) with UltraCruz™ Mounting Medium: sc-24941. 4) Immunohistochemistry: use ImmunoCruz™: sc-2053 or ABC: sc-2023 goat IgG Staining Systems.

DATA



NCAM-L1 (N-14): sc-31032. Western blot analysis of NCAM-L1 expression in IMR-32 (A), HeLa (B) and SH-SY5Y (C) whole cell lysates.



NCAM-L1 (N-14): sc-31032. Immunoperoxidase staining of formalin fixed, paraffin-embedded human colon tissue showing apical membrane staining of glandular cells.

SELECT PRODUCT CITATIONS

1. Tagliavacca, L., et al. 2013. L1CAM and its cell-surface mutants: new mechanisms and effects relevant to the physiology and pathology of neural cells. *J. Neurochem.* 124: 397-409.

STORAGE

Store at 4° C, **DO NOT FREEZE**. Stable for one year from the date of shipment. Non-hazardous. No MSDS required.

RESEARCH USE

For research use only, not for use in diagnostic procedures.

PROTOCOLS

See our web site at www.scbt.com or our catalog for detailed protocols and support products.



Try **NCAM-L1 (D-5): sc-374046** or **NCAM-L1 (C-2): sc-514360**, our highly recommended monoclonal alternatives to NCAM-L1 (N-14). Also, for AC, HRP, FITC, PE, Alexa Fluor® 488 and Alexa Fluor® 647 conjugates, see **NCAM-L1 (D-5): sc-374046**.