

# Laminin $\gamma$ -1 (K-19): sc-31094

## BACKGROUND

Laminins are essential and abundant structural non-collagenous glycoproteins localizing to basement membranes. Basement membranes (cell-associated extracellular matrices (ECMs)) are polymers of Laminins with stabilizing Type IV Collagen networks, Nidogen and several proteoglycans. Basement membranes are found under epithelial layers, around the endothelium of blood vessels, and surrounding muscle, peripheral nerve and fat cells. Formation of basement membranes influences cell proliferation, phenotype, migration, gene expression and tissue architecture. Each Laminin is a heterotrimer of  $\alpha$ ,  $\beta$  and  $\gamma$  chain subunits that undergoes cell-secretion and incorporation into the ECM. Laminins can self-assemble, bind to other matrix macromolecules and have unique and shared cell interactions mediated by Integrins, dystroglycan and cognate Laminin receptors. The human Laminin  $\gamma$ -1 gene maps to chromosome 1q25.3 and is ubiquitously expressed in tissues that produce basement membranes.

## CHROMOSOMAL LOCATION

Genetic locus: LAMC1 (human) mapping to 1q25.3; Lamc1 (mouse) mapping to 1 G3.

## SOURCE

Laminin  $\gamma$ -1 (K-19) is an affinity purified goat polyclonal antibody raised against a peptide mapping near the C-terminus of Laminin  $\gamma$ -1 of human origin.

## PRODUCT

Each vial contains 200  $\mu$ g IgG in 1.0 ml of PBS with < 0.1% sodium azide and 0.1% gelatin.

Blocking peptide available for competition studies, sc-31094 P, (100  $\mu$ g peptide in 0.5 ml PBS containing < 0.1% sodium azide and 0.2% BSA).

## RESEARCH USE

For research use only, not for use in diagnostic procedures.

## APPLICATIONS

Laminin  $\gamma$ -1 (K-19) is recommended for detection of precursor and mature Laminin  $\gamma$ -1 of mouse, rat and human origin by Western Blotting (starting dilution 1:200, dilution range 1:100-1:1000), immunofluorescence (starting dilution 1:50, dilution range 1:50-1:500), immunohistochemistry (including paraffin-embedded sections) (starting dilution 1:50, dilution range 1:50-1:500) and solid phase ELISA (starting dilution 1:30, dilution range 1:30-1:3000).

Suitable for use as control antibody for Laminin  $\gamma$ -1 siRNA (h): sc-29388, Laminin  $\gamma$ -1 siRNA (m): sc-35780, Laminin  $\gamma$ -1 shRNA Plasmid (h): sc-29388-SH, Laminin  $\gamma$ -1 shRNA Plasmid (m): sc-35780-SH, Laminin  $\gamma$ -1 shRNA (h) Lentiviral Particles: sc-29388-V and Laminin  $\gamma$ -1 shRNA (m) Lentiviral Particles: sc-35780-V.

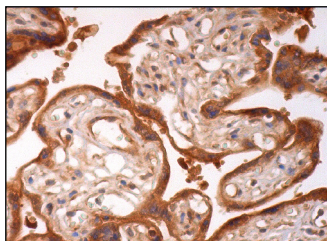
Molecular Weight of Laminin  $\gamma$ -1: 200-215 kDa.

Positive Controls: HeLa whole cell lysate: sc-2200, A-431 whole cell lysate: sc-2201 or NIH/3T3 whole cell lysate: sc-2210.

## RECOMMENDED SECONDARY REAGENTS

To ensure optimal results, the following support (secondary) reagents are recommended: 1) Western Blotting: use donkey anti-goat IgG-HRP: sc-2020 (dilution range: 1:2000-1:100,000) or Cruz Marker™ compatible donkey anti-goat IgG-HRP: sc-2033 (dilution range: 1:2000-1:5000), Cruz Marker™ Molecular Weight Standards: sc-2035, TBS Blotto A Blocking Reagent: sc-2333 and Western Blotting Luminol Reagent: sc-2048. 2) Immunofluorescence: use donkey anti-goat IgG-FITC: sc-2024 (dilution range: 1:100-1:400) or donkey anti-goat IgG-TR: sc-2783 (dilution range: 1:100-1:400) with UltraCruz™ Mounting Medium: sc-24941. 3) Immunohistochemistry: use ImmunoCruz™: sc-2053 or ABC: sc-2023 goat IgG Staining Systems.

## DATA



Laminin  $\gamma$ -1 (K-19): sc-31094. Immunoperoxidase staining of formalin fixed, paraffin-embedded human placenta tissue showing cytoplasmic staining of trophoblastic cells.

## SELECT PRODUCT CITATIONS

- Grootenboer-Mignot, S., Descamps, V., Picard-Dahan, C., Nicaise-Roland, P., Prost-Squarcioni, C., Leroux-Villet, C., Champagnat, C., Delaval, A., Aucouturier, F., Crickx, B. and Chollet-Martin, S. 2009. Place of human amniotic membrane immunoblotting in the diagnosis of autoimmune bullous dermatoses. *Br. J. Dermatol.* 162: 743-750.
- Qiao, W., Wang, C., Chen, B., Zhang, F., Liu, Y., Lu, Q., Guo, H., Yan, C., Sun, H., Hu, G. and Yin, X. 2015. Ibuprofen attenuates cardiac fibrosis in streptozotocin-induced diabetic rats. *Cardiology* 131: 97-106.

## STORAGE

Store at 4° C, \*\*DO NOT FREEZE\*\*. Stable for one year from the date of shipment. Non-hazardous. No MSDS required.

## PROTOCOLS

See our web site at [www.scbt.com](http://www.scbt.com) or our catalog for detailed protocols and support products.

**MONOS**  
Satisfaction  
Guaranteed

Try **Laminin  $\gamma$ -1 (D-3): sc-17751** or **Laminin  $\gamma$ -1 (B-4): sc-13144**, our highly recommended monoclonal alternatives to Laminin  $\gamma$ -1 (K-19).