

# ErbB-4 (G-20): sc-31150

## BACKGROUND

The EGF receptor family comprises several related receptor tyrosine kinases that are frequently overexpressed in a variety of carcinomas. Members of this receptor family include EGFR (HER1), Neu (ErbB-2, HER2), ErbB-3 (HER3) and ErbB-4 (HER4), which form either homodimers or heterodimers upon ligand binding. The gene encoding ErbB-4 is expressed as a full length protein, which produces a short membrane-anchored cytoplasmic domain fragment and a long ectodomain fragment. The short fragment is heavily tyrosine phosphorylated and possesses tyrosine kinase catalytic activity toward an exogenous substrate. Proteolytic cleavage of ErbB-4 is promoted by the binding of heregulin. ErbB-4 is involved in cell proliferation and differentiation and its expression is highest in breast carcinoma cell lines, normal skeletal muscle, heart, pituitary, brain and cerebellum.

## REFERENCES

1. Plowman, G.D., et al. 1993. Ligand-specific activation of HER4/p180ErbB-4, a fourth member of the epidermal growth factor receptor family. *Proc. Natl. Acad. Sci. USA* 90: 1746-1750.
2. Zimonjic, D.B., et al. 1995. Localization of the human HER4/ErbB-4 gene to chromosome 2. *Oncogene* 10: 1235-1237.
3. Vecchi, M., et al. 1996. Selective cleavage of the heregulin receptor ErbB-4 by protein kinase C activation. *J. Biol. Chem.* 271: 18989-18995.
4. Vecchi, M., et al. 1998. Tyrosine phosphorylation and proteolysis. Pervanadate-induced, metalloprotease-dependent cleavage of the ErbB-4 receptor and amphiregulin. *J. Biol. Chem.* 273: 20589-20595.

## CHROMOSOMAL LOCATION

Genetic locus: ERBB4 (human) mapping to 2q34; Erbb4 (mouse) mapping to 1 C3.

## SOURCE

ErbB-4 (G-20) is an affinity purified goat polyclonal antibody raised against a peptide mapping within a C-terminal cytoplasmic domain of ErbB-4 of human origin.

## PRODUCT

Each vial contains 200 µg IgG in 1.0 ml of PBS with < 0.1% sodium azide and 0.1% gelatin.

Blocking peptide available for competition studies, sc-31150 P, (100 µg peptide in 0.5 ml PBS containing < 0.1% sodium azide and 0.2% BSA).

## STORAGE

Store at 4° C, **\*\*DO NOT FREEZE\*\***. Stable for one year from the date of shipment. Non-hazardous. No MSDS required.

## PROTOCOLS

See our web site at [www.scbt.com](http://www.scbt.com) or our catalog for detailed protocols and support products.

## APPLICATIONS

ErbB-4 (G-20) is recommended for detection of ErbB-4 of mouse, rat and human origin by Western Blotting (starting dilution 1:200, dilution range 1:100-1:1000), immunoprecipitation [1-2 µg per 100-500 µg of total protein (1 ml of cell lysate)], immunofluorescence (starting dilution 1:50, dilution range 1:50-1:500), immunohistochemistry (including paraffin-embedded sections) (starting dilution 1:50, dilution range 1:50-1:500) and solid phase ELISA (starting dilution 1:30, dilution range 1:30-1:3000).

ErbB-4 (G-20) is also recommended for detection of ErbB-4 in additional species, including equine, canine, bovine, porcine and avian.

Suitable for use as control antibody for ErbB-4 siRNA (h): sc-35329, ErbB-4 siRNA (m): sc-35330, ErbB-4 shRNA Plasmid (h): sc-35329-SH, ErbB-4 shRNA Plasmid (m): sc-35330-SH, ErbB-4 shRNA (h) Lentiviral Particles: sc-35329-V and ErbB-4 shRNA (m) Lentiviral Particles: sc-35330-V.

Molecular Weight of ErbB-4 precursor: 180 kDa.

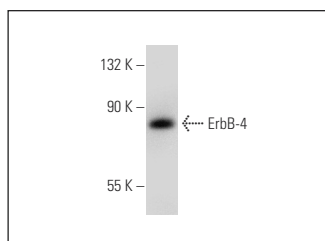
Molecular Weight of cleaved ErbB-4 forms: 80/120 kDa.

Positive Controls: mouse brain extract: sc-2253, T47-14 whole cell lysate or serum starved SW480 whole cell lysate.

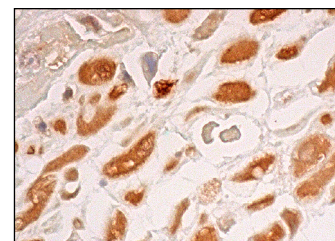
## RECOMMENDED SECONDARY REAGENTS

To ensure optimal results, the following support (secondary) reagents are recommended: 1) Western Blotting: use donkey anti-goat IgG-HRP: sc-2020 (dilution range: 1:2000-1:100,000) or Cruz Marker™ compatible donkey anti-goat IgG-HRP: sc-2033 (dilution range: 1:2000-1:5000), Cruz Marker™ Molecular Weight Standards: sc-2035, TBS Blotto A Blocking Reagent: sc-2333 and Western Blotting Luminol Reagent: sc-2048. 2) Immunoprecipitation: use Protein A/G PLUS-Agarose: sc-2003 (0.5 ml agarose/2.0 ml). 3) Immunofluorescence: use donkey anti-goat IgG-FITC: sc-2024 (dilution range: 1:100-1:400) or donkey anti-goat IgG-TR: sc-2783 (dilution range: 1:100-1:400) with UltraCruz™ Mounting Medium: sc-24941. 4) Immunohistochemistry: use ImmunoCruz™: sc-2053 or ABC: sc-2023 goat IgG Staining Systems.

## DATA



ErbB-4 (G-20): sc-31150. Western blot analysis of ErbB-4 expression in mouse brain tissue extract.



ErbB-4 (G-20): sc-31150. Immunoperoxidase staining of formalin fixed, paraffin-embedded human placenta tissue showing nuclear and cytoplasmic staining of decidual cells.

## RESEARCH USE

For research use only, not for use in diagnostic procedures.