

# TNF-R1 (K-20): sc-31349

## BACKGROUND

Tumor necrosis factor (TNF) is a pleiotropic cytokine whose function is mediated through two distinct cell surface receptors. These receptors, designated TNF-R1 and TNF-R2, are expressed on most cell types. The majority of TNF functions are primarily mediated through TNF-R1, while signaling through TNF-R2 occurs less extensively and is confined to cells of the immune system. Both of these proteins belong to the growing TNF and nerve growth factor (NGF) receptor superfamily, which includes FAS, CD30, CD27 and CD40. The members of this superfamily are type I membrane proteins that share sequence homology confined to the extracellular region. TNF-R1 shares a motif coined the "death domain" with FAS and three structurally unrelated signaling proteins, TRADD, FADD and RIP. This "death domain" is required for transduction of the apoptotic signal.

## REFERENCES

1. Derré, J., et al. 1991. The gene for the type 1 tumor necrosis factor receptor (TNF-R1) is localized on band 12p13. *Hum. Genet.* 87: 231-233.
2. Milatovich, A., et al. 1991. Tumor necrosis factor receptor genes, TNFR1 and TNFR2, on human chromosomes 12 and 1. *Somat. Cell Mol. Genet.* 17: 519-523.

## CHROMOSOMAL LOCATION

Genetic locus: TNFRSF1A (human) mapping to 12p13.31; Tnfrsf1a (mouse) mapping to 6 F3.

## SOURCE

TNF-R1 (K-20) is an affinity purified goat polyclonal antibody raised against a peptide mapping within an extracellular domain of TNF-R1 of human origin.

## PRODUCT

Each vial contains 200 µg IgG in 1.0 ml of PBS with < 0.1% sodium azide and 0.1% gelatin.

Blocking peptide available for competition studies, sc-31349 P, (100 µg peptide in 0.5 ml PBS containing < 0.1% sodium azide and 0.2% BSA).

## APPLICATIONS

TNF-R1 (K-20) is recommended for detection of TNF-R1 of human origin by Western Blotting (starting dilution 1:200, dilution range 1:100-1:1000), immunoprecipitation [1-2 µg per 100-500 µg of total protein (1 ml of cell lysate)], immunofluorescence (starting dilution 1:50, dilution range 1:50-1:500) and solid phase ELISA (starting dilution 1:30, dilution range 1:30-1:3000). TNF-R1 (K-20) is also recommended for detection of TNF-R1 in additional species, including equine, canine, bovine and porcine.

Suitable for use as control antibody for TNF-R1 siRNA (h): sc-29507, TNF-R1 shRNA Plasmid (h): sc-29507-SH and TNF-R1 shRNA (h) Lentiviral Particles: sc-29507-V.

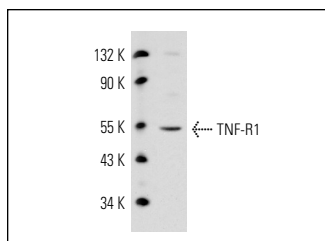
Molecular Weight of TNF-R1: 55 kDa.

Positive Controls: MCF7 whole cell lysate: sc-2206, HeLa whole cell lysate: sc-2200 or U-937 cell lysate: sc-2239.

## RECOMMENDED SECONDARY REAGENTS

To ensure optimal results, the following support (secondary) reagents are recommended: 1) Western Blotting: use donkey anti-goat IgG-HRP: sc-2020 (dilution range: 1:2000-1:100,000) or Cruz Marker™ compatible donkey anti-goat IgG-HRP: sc-2033 (dilution range: 1:2000-1:5000), Cruz Marker™ Molecular Weight Standards: sc-2035, TBS Blotto A Blocking Reagent: sc-2333 and Western Blotting Luminol Reagent: sc-2048. 2) Immunoprecipitation: use Protein A/G PLUS-Agarose: sc-2003 (0.5 ml agarose/2.0 ml). 3) Immunofluorescence: use donkey anti-goat IgG-FITC: sc-2024 (dilution range: 1:100-1:400) or donkey anti-goat IgG-TR: sc-2783 (dilution range: 1:100-1:400) with UltraCruz™ Mounting Medium: sc-24941.

## DATA



TNF-R1 (K-20): sc-31349. Western blot analysis of TNF-R1 expression in HeLa whole cell lysate.

## STORAGE

Store at 4° C, \*\*DO NOT FREEZE\*\*. Stable for one year from the date of shipment. Non-hazardous. No MSDS required.

## RESEARCH USE

For research use only, not for use in diagnostic procedures.

## PROTOCOLS

See our web site at [www.scbt.com](http://www.scbt.com) or our catalog for detailed protocols and support products.


 MONOS  
Satisfaction  
Guaranteed

Try **TNF-R1 (H-5): sc-8436** or **TNF-R1 (E-11): sc-374186**, our highly recommended monoclonal alternatives to TNF-R1 (K-20). Also, for AC, HRP, FITC, PE, Alexa Fluor® 488 and Alexa Fluor® 647 conjugates, see **TNF-R1 (H-5): sc-8436**.