

## P2X1 (Y-14): sc-31491

### BACKGROUND

The P2X receptor family is comprised of ligand-gated ion channels that allow for the increased permeability of calcium into the cell in response to extracellular ATP. The seven P2X receptors, P2X1-P2X7, form either homomeric or heteromeric channels or both. They are characterized by intracellular amino and carboxy termini. P2X receptors are expressed in a wide variety of tissues, including neurons, prostate, bladder, pancreas, colon, testis and ovary. The major function of the P2X receptors is to mediate synaptic transmissions between neurons and to other tissues via the binding of extracellular ATP, which acts as a neurotransmitter. The P2X receptors may be involved in the onset of necrosis or apoptosis after prolonged exposure to high concentrations of extracellular ATP.

### REFERENCES

1. Longhurst, P.A., et al. 1996. The human P2X1 receptor: molecular cloning, tissue distribution, and localization to chromosome 17. *Biochim. Biophys. Acta* 1308: 185-188.
2. Di Virgilio, F., et al. 1998. Cytolytic P2X purinoceptors. *Cell Death Differ.* 5: 191-199.
3. Alexander, K., et al. 1999. Allosteric modulation and accelerated resensitization of human P2X3 receptors by cibacron blue. *J. Pharmacol. Exp. Ther.* 291: 1135-1142.
4. Oury, C., et al. 2000. A natural dominant negative P2X1 receptor due to deletion of a single amino acid residue. *J. Biol. Chem.* 275: 22611-22614.

### CHROMOSOMAL LOCATION

Genetic locus: P2RX1 (human) mapping to 17p13.2; P2rx1 (mouse) mapping to 11 B4.

### SOURCE

P2X1 (Y-14) is an affinity purified goat polyclonal antibody raised against a peptide mapping within a C-terminal cytoplasmic domain of P2X1 of human origin.

### PRODUCT

Each vial contains 200 µg IgG in 1.0 ml of PBS with < 0.1% sodium azide and 0.1% gelatin.

Blocking peptide available for competition studies, sc-31491 P, (100 µg peptide in 0.5 ml PBS containing < 0.1% sodium azide and 0.2% BSA).

### STORAGE

Store at 4° C, \*\*DO NOT FREEZE\*\*. Stable for one year from the date of shipment. Non-hazardous. No MSDS required.

### PROTOCOLS

See our web site at [www.scbt.com](http://www.scbt.com) or our catalog for detailed protocols and support products.

### APPLICATIONS

P2X1 (Y-14) is recommended for detection of P2X1 of mouse, rat and human origin by Western Blotting (starting dilution 1:200, dilution range 1:100-1:1000), immunoprecipitation [1-2 µg per 100-500 µg of total protein (1 ml of cell lysate)], immunofluorescence (starting dilution 1:50, dilution range 1:50-1:500), immunohistochemistry (including paraffin-embedded sections) (starting dilution 1:50, dilution range 1:50-1:500) and solid phase ELISA (starting dilution 1:30, dilution range 1:30-1:3000).

Suitable for use as control antibody for P2X1 siRNA (h): sc-42563, P2X1 siRNA (m): sc-42564, P2X1 shRNA Plasmid (h): sc-42563-SH, P2X1 shRNA Plasmid (m): sc-42564-SH, P2X1 shRNA (h) Lentiviral Particles: sc-42563-V and P2X1 shRNA (m) Lentiviral Particles: sc-42564-V.

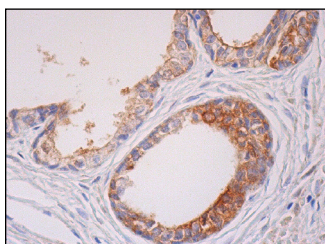
Molecular Weight of P2X1 dimers: 70/140 kDa.

Positive Controls: human platelet whole cell lysate: sc-363773, BYDP whole cell lysate: sc-364368 or MTE1D whole cell lysate: sc-364918.

### RECOMMENDED SECONDARY REAGENTS

To ensure optimal results, the following support (secondary) reagents are recommended: 1) Western Blotting: use donkey anti-goat IgG-HRP: sc-2020 (dilution range: 1:2000-1:100,000) or Cruz Marker™ compatible donkey anti-goat IgG-HRP: sc-2033 (dilution range: 1:2000-1:5000), Cruz Marker™ Molecular Weight Standards: sc-2035, TBS Blotto A Blocking Reagent: sc-2333 and Western Blotting Luminol Reagent: sc-2048. 2) Immunoprecipitation: use Protein A/G PLUS-Agarose: sc-2003 (0.5 ml agarose/2.0 ml). 3) Immunofluorescence: use donkey anti-goat IgG-FITC: sc-2024 (dilution range: 1:100-1:400) or donkey anti-goat IgG-TR: sc-2783 (dilution range: 1:100-1:400) with UltraCruz™ Mounting Medium: sc-24941. 4) Immunohistochemistry: use ImmunoCruz™: sc-2053 or ABC: sc-2023 goat IgG Staining Systems.

### DATA



P2X1 (Y-14): sc-31491. Immunoperoxidase staining of formalin fixed, paraffin-embedded human prostate tissue showing cytoplasmic and membrane staining of glandular cells.

### RESEARCH USE

For research use only, not for use in diagnostic procedures.