

X11 γ (G-16): sc-31515

BACKGROUND

The β -Amyloid precursor protein (β -APP) is a major constituent of the amyloid deposits in patients with Alzheimer's disease. The β -Amyloid precursor is known to interact with several proteins, including X11 and the G heterotrimeric protein APP-BP1. The neuronal, transmembrane protein X11 is known to bind to the β -Amyloid precursor protein via a phosphotyrosine binding (PTB) domain, reducing the secretion of cellular β -APP and slowing β -APP processing pathways. X11 binds specifically to the YENPTY motif, which is involved in the internalization of β -APP. Multiple splice variants of X11 have been identified, including X11 α (also designated Mint 1), X11 β (Mint 2) and X11 γ (Mint 3).

REFERENCES

1. Borg, J.P., et al. 1996. The phosphotyrosine interaction domains of X11 and FE65 bind to distinct sites on the YENPTY motif of amyloid precursor protein. *Mol. Cell Biol.* 16: 6229-6241.
2. Okamoto, M., et al. 1997. Mints, Munc18-interacting proteins in synaptic vesicle exocytosis. *J. Biol. Chem.* 272: 31459-31464.
3. Zhang, Z., et al. 1997. Sequence-specific recognition of the internalization motif of the Alzheimer's amyloid precursor protein by the X11 PTB domain. *EMBO J.* 16: 6141-6150.
4. Russo, T., et al. 1998. FE65 and the protein network centered around the cytosolic domain of the Alzheimer's β -amyloid precursor protein. *FEBS Lett.* 434: 1-7.
5. Borg, J.P., et al. 1998. The X11 α protein slows cellular amyloid precursor protein processing and reduces A β 40 and A β 42 secretion. *J. Biol. Chem.* 273: 14761-14766.
6. Sastre, M., et al. 1998. X11 interaction with β -amyloid precursor protein modulates its cellular stabilization and reduces amyloid β -protein secretion. *J. Biol. Chem.* 273: 22351-22357.

CHROMOSOMAL LOCATION

Genetic locus: APBA3 (human) mapping to 19p13.3; Apba3 (mouse) mapping to 10 C1.

SOURCE

X11 γ (G-16) is an affinity purified goat polyclonal antibody raised against a peptide mapping within an internal region of X11 γ of human origin.

PRODUCT

Each vial contains 200 μ g IgG in 1.0 ml of PBS with < 0.1% sodium azide and 0.1% gelatin.

Blocking peptide available for competition studies, sc-31515 P, (100 μ g peptide in 0.5 ml PBS containing < 0.1% sodium azide and 0.2% BSA).

STORAGE

Store at 4 $^{\circ}$ C, ****DO NOT FREEZE****. Stable for one year from the date of shipment. Non-hazardous. No MSDS required.

APPLICATIONS

X11 γ (G-16) is recommended for detection of X11 γ of mouse, rat and human origin by Western Blotting (starting dilution 1:200, dilution range 1:100-1:1000), immunoprecipitation [1-2 μ g per 100-500 μ g of total protein (1 ml of cell lysate)], immunofluorescence (starting dilution 1:50, dilution range 1:50-1:500) and solid phase ELISA (starting dilution 1:30, dilution range 1:30-1:3000).

X11 γ (G-16) is also recommended for detection of X11 γ in additional species, including canine and porcine.

Suitable for use as control antibody for X11 γ siRNA (h): sc-36847, X11 γ siRNA (m): sc-36848, X11 γ shRNA Plasmid (h): sc-36847-SH, X11 γ shRNA Plasmid (m): sc-36848-SH, X11 γ shRNA (h) Lentiviral Particles: sc-36847-V and X11 γ shRNA (m) Lentiviral Particles: sc-36848-V.

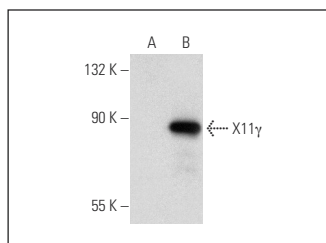
Molecular Weight of X11 γ : 89 kDa.

Positive Controls: RSV-3T3 whole cell lysate, X11 γ (m): 293T Lysate: sc-124660 or mouse brain extract: sc-2253.

RECOMMENDED SECONDARY REAGENTS

To ensure optimal results, the following support (secondary) reagents are recommended: 1) Western Blotting: use donkey anti-goat IgG-HRP: sc-2020 (dilution range: 1:2000-1:100,000) or Cruz MarkerTM compatible donkey anti-goat IgG-HRP: sc-2033 (dilution range: 1:2000-1:5000), Cruz MarkerTM Molecular Weight Standards: sc-2035, TBS Blotto A Blocking Reagent: sc-2333 and Western Blotting Luminol Reagent: sc-2048. 2) Immunoprecipitation: use Protein A/G PLUS-Agarose: sc-2003 (0.5 ml agarose/2.0 ml). 3) Immunofluorescence: use donkey anti-goat IgG-FITC: sc-2024 (dilution range: 1:100-1:400) or donkey anti-goat IgG-TR: sc-2783 (dilution range: 1:100-1:400) with UltraCruzTM Mounting Medium: sc-24941.

DATA



X11 γ (G-16): sc-31515. Western blot analysis of X11 γ expression in non-transfected: sc-117752 (A) and mouse X11 γ transfected: sc-124660 (B) 293T whole cell lysates.

RESEARCH USE

For research use only, not for use in diagnostic procedures.

PROTOCOLS

See our web site at www.scbt.com or our catalog for detailed protocols and support products.