

NMDA ϵ 1 (N-20): sc-31539

BACKGROUND

Glutamate receptors mediate most excitatory neurotransmission in the brain and play an important role in neural plasticity, neural development and neurodegeneration. Ionotropic glutamate receptors are categorized into NMDA receptors and kainate/AMPA receptors, both of which contain glutamate-gated, cation-specific ion channels. Kainate/AMPA receptors are co-localized with NMDA receptors in many synapses and consist of seven structurally related subunits designated GluR-1 to -7. The kainate/AMPA receptors are primarily responsible for the fast excitatory neuro-transmission by glutamate, whereas the NMDA receptors exhibit slow kinetics of Ca²⁺ ions and a high permeability for Ca²⁺ ions. The NMDA receptors consist of five subunits: ϵ 1, 2, 3, 4 and one ζ subunit. The ζ subunit is expressed throughout the brainstem whereas the four epsilon subunits display limited distribution.

CHROMOSOMAL LOCATION

Genetic locus: GRIN2A (human) mapping to 16p13.2; Grin2a (mouse) mapping to 16 A1.

SOURCE

NMDA ϵ 1 (N-20) is an affinity purified goat polyclonal antibody raised against a peptide mapping within an N-terminal extracellular domain of NMDA ϵ 1 of human origin.

PRODUCT

Each vial contains 200 μ g IgG in 1.0 ml of PBS with < 0.1% sodium azide and 0.1% gelatin.

Blocking peptide available for competition studies, sc-31539 P, (100 μ g peptide in 0.5 ml PBS containing < 0.1% sodium azide and 0.2% BSA).

STORAGE

Store at 4° C, ****DO NOT FREEZE****. Stable for one year from the date of shipment. Non-hazardous. No MSDS required.

APPLICATIONS

NMDA ϵ 1 (N-20) is recommended for detection of NMDA ϵ 1 of mouse, rat and human origin by Western Blotting (starting dilution 1:200, dilution range 1:100-1:1000), immunoprecipitation [1-2 μ g per 100-500 μ g of total protein (1 ml of cell lysate)], immunofluorescence (starting dilution 1:50, dilution range 1:50-1:500) and solid phase ELISA (starting dilution 1:30, dilution range 1:30-1:3000). NMDA ϵ 1 (N-20) is also recommended for detection of NMDA ϵ 1 in additional species, including equine, canine and bovine.

Suitable for use as control antibody for NMDA ϵ 1 siRNA (h): sc-36083, NMDA ϵ 1 siRNA (m): sc-36084, NMDA ϵ 1 siRNA (r): sc-270157, NMDA ϵ 1 shRNA Plasmid (h): sc-36083-SH, NMDA ϵ 1 shRNA Plasmid (m): sc-36084-SH, NMDA ϵ 1 shRNA Plasmid (r): sc-270157-SH, NMDA ϵ 1 shRNA (h) Lentiviral Particles: sc-36083-V, NMDA ϵ 1 shRNA (m) Lentiviral Particles: sc-36084-V and NMDA ϵ 1 shRNA (r) Lentiviral Particles: sc-270157-V.

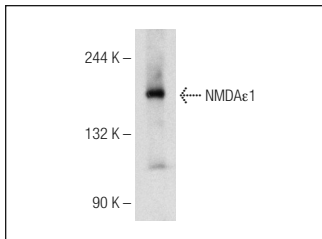
Molecular Weight of NMDA ϵ 1: 177 kDa.

Positive Controls: mouse brain extract: sc-2253, mouse cerebellum extract: sc-2403 or rat brain extract: sc-2392.

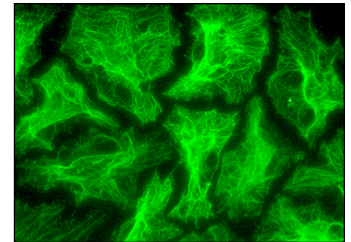
RECOMMENDED SECONDARY REAGENTS

To ensure optimal results, the following support (secondary) reagents are recommended: 1) Western Blotting: use donkey anti-goat IgG-HRP: sc-2020 (dilution range: 1:2000-1:100,000) or Cruz Marker™ compatible donkey anti-goat IgG-HRP: sc-2033 (dilution range: 1:2000-1:5000), Cruz Marker™ Molecular Weight Standards: sc-2035, TBS Blotto A Blocking Reagent: sc-2333 and Western Blotting Luminol Reagent: sc-2048. 2) Immunoprecipitation: use Protein A/G PLUS-Agarose: sc-2003 (0.5 ml agarose/2.0 ml). 3) Immunofluorescence: use donkey anti-goat IgG-FITC: sc-2024 (dilution range: 1:100-1:400) or donkey anti-goat IgG-TR: sc-2783 (dilution range: 1:100-1:400) with UltraCruz™ Mounting Medium: sc-24941.

DATA



NMDA ϵ 1 (N-20): sc-31539. Western blot analysis of NMDA ϵ 1 expression in rat brain tissue extract.



NMDA ϵ 1 (N-20): sc-31539. Immunofluorescence staining of methanol-fixed HeLa cells showing membrane localization.

RESEARCH USE

For research use only, not for use in diagnostic procedures.

PROTOCOLS

See our web site at www.scbt.com or our catalog for detailed protocols and support products.

MONOS
Satisfaction
Guaranteed

Try **NMDA ϵ 1 (E-4): sc-515148** or **NMDA ϵ 1 (D-8): sc-390094**, our highly recommended monoclonal alternatives to NMDA ϵ 1 (N-20).