

# Slit3 (F-15): sc-31597

## BACKGROUND

Secreted leucine-rich repeat-containing proteins 1-3 (Slit1-3) are secreted glycoproteins that influence axonal guidance and mediate normal neural development by acting as high-affinity signaling ligands for the repulsive guidance receptor, roundabout (robo). Within the developing central nervous system (CNS) of different vertebrate systems, Slit proteins are expressed in equivalent regions, suggesting a conserved function among vertebrate homologs. Slit is expressed in the midline of the central nervous system in both vertebrates and invertebrates, where it functions as a regulatory factor of mesodermal cell movement during gastrulation. Slit2 is a short range inhibitory guidance cue for retinal ganglion cell (RGC) axons that may mediate spatial progression of RGCs.

## CHROMOSOMAL LOCATION

Genetic locus: SLIT3 (human) mapping to 5q34; Slit3 (mouse) mapping to 11 A4.

## SOURCE

Slit3 (F-15) is an affinity purified goat polyclonal antibody raised against a peptide mapping at the C-terminus of Slit3 of human origin.

## PRODUCT

Each vial contains 200 µg IgG in 1.0 ml of PBS with < 0.1% sodium azide and 0.1% gelatin.

Blocking peptide available for competition studies, sc-31597 P, (100 µg peptide in 0.5 ml PBS containing < 0.1% sodium azide and 0.2% BSA).

## STORAGE

Store at 4° C, **\*\*DO NOT FREEZE\*\***. Stable for one year from the date of shipment. Non-hazardous. No MSDS required.

## RESEARCH USE

For research use only, not for use in diagnostic procedures.

## APPLICATIONS

Slit3 (F-15) is recommended for detection of Slit3 isoform 1 of mouse, rat and human origin by Western Blotting (starting dilution 1:200, dilution range 1:100-1:1000), immunoprecipitation [1-2 µg per 100-500 µg of total protein (1 ml of cell lysate)], immunofluorescence (starting dilution 1:50, dilution range 1:50-1:500), immunohistochemistry (including paraffin-embedded sections) (starting dilution 1:50, dilution range 1:50-1:500) and solid phase ELISA (starting dilution 1:30, dilution range 1:30-1:3000).

Suitable for use as control antibody for Slit3 siRNA (h): sc-42260, Slit3 siRNA (m): sc-42261, Slit3 shRNA Plasmid (h): sc-42260-SH, Slit3 shRNA Plasmid (m): sc-42261-SH, Slit3 shRNA (h) Lentiviral Particles: sc-42260-V and Slit3 shRNA (m) Lentiviral Particles: sc-42261-V.

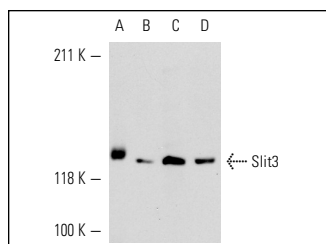
Molecular Weight of Slit3: 130 kDa.

Positive Controls: SK-N-MC cell lysate: sc-2237, IMR-32 cell lysate: sc-2409 or EOC 20 whole cell lysate: sc-364187.

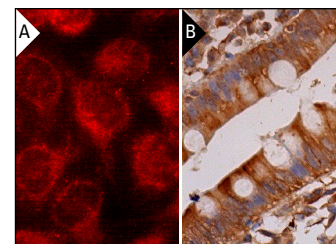
## RECOMMENDED SECONDARY REAGENTS

To ensure optimal results, the following support (secondary) reagents are recommended: 1) Western Blotting: use donkey anti-goat IgG-HRP: sc-2020 (dilution range: 1:2000-1:100,000) or Cruz Marker™ compatible donkey anti-goat IgG-HRP: sc-2033 (dilution range: 1:2000-1:5000), Cruz Marker™ Molecular Weight Standards: sc-2035, TBS Blotto A Blocking Reagent: sc-2333 and Western Blotting Luminol Reagent: sc-2048. 2) Immunoprecipitation: use Protein A/G PLUS-Agarose: sc-2003 (0.5 ml agarose/2.0 ml). 3) Immunofluorescence: use donkey anti-goat IgG-FITC: sc-2024 (dilution range: 1:100-1:400) or donkey anti-goat IgG-TR: sc-2783 (dilution range: 1:100-1:400) with UltraCruz™ Mounting Medium: sc-24941. 4) Immunohistochemistry: use ImmunoCruz™: sc-2053 or ABC: sc-2023 goat IgG Staining Systems.

## DATA



Slit3 (F-15): sc-31597. Western blot analysis of Slit3 expression in SK-N-MC (A), IMR-32 (B), TT (C) and EOC 20 (D) whole cell lysates.



Slit3 (F-15): sc-31597. Immunofluorescence staining of methanol-fixed HeLa cells showing cytoplasmic localization (A). Immunoperoxidase staining of formalin fixed, paraffin-embedded human small intestine tissue showing cytoplasmic and membrane staining of glandular cells and interstitial cells (B).

## SELECT PRODUCT CITATIONS

- Lim, R., et al. 2014. SLIT3 is increased in supracervical human foetal membranes and in labouring myometrium and regulates pro-inflammatory mediators. *Am. J. Reprod. Immunol.* 71: 297-311.

## PROTOCOLS

See our web site at [www.scbt.com](http://www.scbt.com) or our catalog for detailed protocols and support products.



Try **Slit3 (3C5): sc-293463**, our highly recommended monoclonal alternative to Slit3 (F-15).