

## Eg5 (C-20): sc-31644

### BACKGROUND

Eukaryotes contain a superfamily of microtubule-based motor proteins comprising kinesin and a number of related proteins that are thought to participate in various forms of intracellular motility, including cell division and organelle transport. Eg5 (also known as kinesin-like protein KIF11, or TRIP5) is a slow, plus-end-directed microtubule-based motor of the BimC kinesin family that is essential for bipolar spindle formation during eukaryotic cell division. When the expression of Eg5 is blocked, centrosome migration halts and cells are arrested in mitosis with monoastrial microtubule arrays. Eg5 is phosphorylated on serine during S phase and on both serine and Thr-927 during mitosis, which regulates the association of Eg5 with the spindle apparatus (probably during early prophase). Eg5 is also known to be a member of the thyroid receptor interacting protein (Trip) family, and interacts with the thyroid hormone receptor only in the presence of thyroid hormone.

### CHROMOSOMAL LOCATION

Genetic locus: KIF11 (human) mapping to 10q23.33; Kif11 (mouse) mapping to 19 C2.

### SOURCE

Eg5 (C-20) is an affinity purified goat polyclonal antibody raised against a peptide mapping at the C-terminus of Eg5 of human origin.

### PRODUCT

Each vial contains 200 µg IgG in 1.0 ml of PBS with < 0.1% sodium azide and 0.1% gelatin.

Blocking peptide available for competition studies, sc-31644 P, (100 µg peptide in 0.5 ml PBS containing < 0.1% sodium azide and 0.2% BSA).

### APPLICATIONS

Eg5 (C-20) is recommended for detection of kinesin-related motor protein Eg5 kinesin-related motor protein Eg5 of human and, to a lesser extent, mouse and rat origin by Western Blotting (starting dilution 1:200, dilution range 1:100-1:1000), immunoprecipitation [1-2 µg per 100-500 µg of total protein (1 ml of cell lysate)], immunofluorescence (starting dilution 1:50, dilution range 1:50-1:500) and solid phase ELISA (starting dilution 1:30, dilution range 1:30-1:3000).

Eg5 (C-20) is also recommended for detection of kinesin-related motor protein Eg5 kinesin-related motor protein Eg5 in additional species, including equine and canine.

Suitable for use as control antibody for Eg5 siRNA (h): sc-37052, Eg5 siRNA (m): sc-37053, Eg5 shRNA Plasmid (h): sc-37052-SH, Eg5 shRNA Plasmid (m): sc-37053-SH, Eg5 shRNA (h) Lentiviral Particles: sc-37052-V and Eg5 shRNA (m) Lentiviral Particles: sc-37053-V.

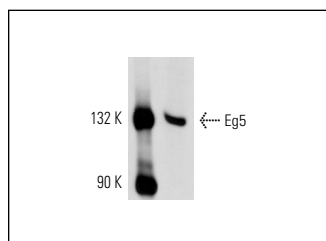
Molecular Weight of Eg5: 132 kDa.

Positive Controls: HeLa whole cell lysate: sc-2200, MCF7 whole cell lysate: sc-2206 or K-562 whole cell lysate: sc-2203.

### RECOMMENDED SECONDARY REAGENTS

To ensure optimal results, the following support (secondary) reagents are recommended: 1) Western Blotting: use donkey anti-goat IgG-HRP: sc-2020 (dilution range: 1:2000-1:100,000) or Cruz Marker™ compatible donkey anti-goat IgG-HRP: sc-2033 (dilution range: 1:2000-1:5000), Cruz Marker™ Molecular Weight Standards: sc-2035, TBS Blotto A Blocking Reagent: sc-2333 and Western Blotting Luminol Reagent: sc-2048. 2) Immunoprecipitation: use Protein A/G PLUS-Agarose: sc-2003 (0.5 ml agarose/2.0 ml). 3) Immunofluorescence: use donkey anti-goat IgG-FITC: sc-2024 (dilution range: 1:100-1:400) or donkey anti-goat IgG-TR: sc-2783 (dilution range: 1:100-1:400) with UltraCruz™ Mounting Medium: sc-24941.

### DATA



Eg5 (C-20): sc-31644. Western blot analysis of Eg5 expression in HeLa whole cell lysate.

### STORAGE

Store at 4° C, \*\*DO NOT FREEZE\*\*. Stable for one year from the date of shipment. Non-hazardous. No MSDS required.

### RESEARCH USE

For research use only, not for use in diagnostic procedures.

### PROTOCOLS

See our web site at [www.scbt.com](http://www.scbt.com) or our catalog for detailed protocols and support products.

**MONOS**  
Satisfaction  
Guaranteed

Try **Eg5 (F-1): sc-374212** or **Eg5 (A-2): sc-365593**, our highly recommended monoclonal alternatives to Eg5 (C-20).