

SPT5 (T-18): sc-31928

BACKGROUND

SPT4 (also designated Suppressor of Ty4 and p14) and SPT5 (also designated DSIF p160) are highly conserved proteins from yeast to humans. Nuclear SPT4 and SPT5 are involved in both DRB (5,6-dichloro-1- β -D-ribofuranosylbenzimidazole)-mediated transcriptional inhibition as well as the activation of transcriptional elongation by the HIV-1 protein Tat. SPT4 binds SPT5 to form the DSIF (DRB-sensitivity-inducing factor) complex, which binds RNA polymerase II and directly regulates elongation. SPT4, which maps to human chromosome 17. SPT5 protein in mitotic HeLa cells migrates more slowly on SDS-PAGE than does SPT5 isolated from interphase cells, as a result of enhanced SPT5 phosphorylation. The C-terminal CTR1 domain of SPT5 is the substrate for P-TEF β phosphorylation, which is critical for SPT5 function as a regulator of transcriptional elongation.

CHROMOSOMAL LOCATION

Genetic locus: SUPT5H (human) mapping to 19q13.2; Supt5h (mouse) mapping to 7 A3.

SOURCE

SPT5 (T-18) is an affinity purified goat polyclonal antibody raised against a peptide mapping near the C-terminus of SPT5 of human origin.

PRODUCT

Each vial contains 200 μ g IgG in 1.0 ml of PBS with < 0.1% sodium azide and 0.1% gelatin.

Blocking peptide available for competition studies, sc-31928 P, (100 μ g peptide in 0.5 ml PBS containing < 0.1% sodium azide and 0.2% BSA).

RESEARCH USE

For research use only, not for use in diagnostic procedures.

APPLICATIONS

SPT5 (T-18) is recommended for detection of SPT5 of mouse, rat and human origin by Western Blotting (starting dilution 1:200, dilution range 1:100-1:1000), immunoprecipitation [1-2 μ g per 100-500 μ g of total protein (1 ml of cell lysate)], immunofluorescence (starting dilution 1:50, dilution range 1:50-1:500) and solid phase ELISA (starting dilution 1:30, dilution range 1:30-1:3000).

SPT5 (T-18) is also recommended for detection of SPT5 in additional species, including equine, canine, bovine, porcine and avian.

Suitable for use as control antibody for SPT5 siRNA (h): sc-38440, SPT5 siRNA (m): sc-38441, SPT5 shRNA Plasmid (h): sc-38440-SH, SPT5 shRNA Plasmid (m): sc-38441-SH, SPT5 shRNA (h) Lentiviral Particles: sc-38440-V and SPT5 shRNA (m) Lentiviral Particles: sc-38441-V.

SPT5 (T-18) X TransCruz antibody is recommended for Gel Supershift and ChIP applications.

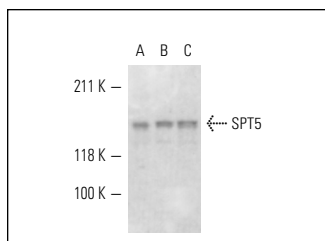
Molecular Weight of SPT5: 160 kDa.

Positive Controls: CCRF-CEM nuclear extract: sc-2146, HeLa nuclear extract: sc-2120 or DU 145 nuclear extract: sc-24960.

RECOMMENDED SECONDARY REAGENTS

To ensure optimal results, the following support (secondary) reagents are recommended: 1) Western Blotting: use donkey anti-goat IgG-HRP: sc-2020 (dilution range: 1:2000-1:100,000) or Cruz Marker™ compatible donkey anti-goat IgG-HRP: sc-2033 (dilution range: 1:2000-1:5000), Cruz Marker™ Molecular Weight Standards: sc-2035, TBS Blotto A Blocking Reagent: sc-2333 and Western Blotting Luminol Reagent: sc-2048. 2) Immunoprecipitation: use Protein A/G PLUS-Agarose: sc-2003 (0.5 ml agarose/2.0 ml). 3) Immunofluorescence: use donkey anti-goat IgG-FITC: sc-2024 (dilution range: 1:100-1:400) or donkey anti-goat IgG-TR: sc-2783 (dilution range: 1:100-1:400) with UltraCruz™ Mounting Medium: sc-24941.

DATA



SPT5 (T-18): sc-31928. Western blot analysis of SPT5 expression in CCRF-CEM (A), DU 145 (B) and HeLa (C) nuclear extracts.

STORAGE

Store at 4° C, **DO NOT FREEZE**. Stable for one year from the date of shipment. Non-hazardous. No MSDS required.

PROTOCOLS

See our web site at www.scbt.com or our catalog for detailed protocols and support products.



Try **SPT5 (D-3): sc-133217** or **SPT5 (D-10): sc-390961**, our highly recommended monoclonal alternatives to SPT5 (T-18).