

PACT (T-18): sc-32010

BACKGROUND

Interferon-inducible double stranded RNA-dependent protein kinase activator, also designated PKR-associated protein X (RAX) or PACT, acts as a protein activator of PKR. Following stress such as serum starvation or peroxide or arsenite treatment, PACT associates with and activates PKR, resulting in eIF2 α activation (phosphorylation), consequent translation inhibition and apoptosis. PACT can directly interact with double stranded RNA (dsRNA), however, eIF2 α activation occurs only in the absence of dsRNA. The presence of certain growth factors may suppress the pro-apoptotic function of PACT. In both human and mouse cells, PACT is phosphorylated on Serine 18, and the phosphorylated form activates PKR following stress. PACT may exist as a heterodimer with eIF2 α , interacting through its DRBM domain.

CHROMOSOMAL LOCATION

Genetic locus: PRKRA (human) mapping to 2q31.2; Prkra (mouse) mapping to 2 C3.

SOURCE

PACT (T-18) is an affinity purified goat polyclonal antibody raised against a peptide mapping within an internal region of PACT of human origin.

PRODUCT

Each vial contains 200 μ g IgG in 1.0 ml of PBS with < 0.1% sodium azide and 0.1% gelatin.

Blocking peptide available for competition studies, sc-32010 P, (100 μ g peptide in 0.5 ml PBS containing < 0.1% sodium azide and 0.2% BSA).

STORAGE

Store at 4° C, ****DO NOT FREEZE****. Stable for one year from the date of shipment. Non-hazardous. No MSDS required.

APPLICATIONS

PACT (T-18) is recommended for detection of PACT (protein activator of the interferon-induced protein kinase) of mouse, rat and human origin by Western Blotting (starting dilution 1:200, dilution range 1:100-1:1000), immunoprecipitation [1-2 μ g per 100-500 μ g of total protein (1 ml of cell lysate)], immunofluorescence (starting dilution 1:50, dilution range 1:50-1:500) and solid phase ELISA (starting dilution 1:30, dilution range 1:30-1:3000).

PACT (T-18) is also recommended for detection of PACT (protein activator of the interferon-induced protein kinase) in additional species, including equine, canine, bovine and porcine.

Suitable for use as control antibody for PACT siRNA (h): sc-36175, PACT siRNA (m2): sc-63342, PACT shRNA Plasmid (h): sc-36175-SH, PACT shRNA Plasmid (m2): sc-63342-SH, PACT shRNA (h) Lentiviral Particles: sc-36175-V and PACT shRNA (m2) Lentiviral Particles: sc-63342-V.

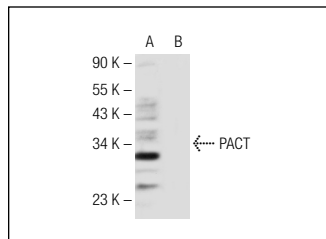
Molecular Weight of PACT: 34 kDa.

Positive Controls: PACT (m): 293T Lysate: sc-127290, SK-N-SH cell lysate: sc-2410 or HeLa whole cell lysate: sc-2200.

RECOMMENDED SECONDARY REAGENTS

To ensure optimal results, the following support (secondary) reagents are recommended: 1) Western Blotting: use donkey anti-goat IgG-HRP: sc-2020 (dilution range: 1:2000-1:100,000) or Cruz Marker™ compatible donkey anti-goat IgG-HRP: sc-2033 (dilution range: 1:2000-1:5000), Cruz Marker™ Molecular Weight Standards: sc-2035, TBS Blotto A Blocking Reagent: sc-2333 and Western Blotting Luminol Reagent: sc-2048. 2) Immunoprecipitation: use Protein A/G PLUS-Agarose: sc-2003 (0.5 ml agarose/2.0 ml). 3) Immunofluorescence: use donkey anti-goat IgG-FITC: sc-2024 (dilution range: 1:100-1:400) or donkey anti-goat IgG-TR: sc-2783 (dilution range: 1:100-1:400) with UltraCruz™ Mounting Medium: sc-24941.

DATA



PACT (T-18): sc-32010. Western blot analysis of PACT expression in non-transfected: sc-117752 (A) and mouse PACT transfected: sc-127290 (B) 293T whole cell lysates.

RESEARCH USE

For research use only, not for use in diagnostic procedures.

PROTOCOLS

See our web site at www.scbt.com or our catalog for detailed protocols and support products.



Try **PACT (D-4): sc-377103** or **PACT (2830C1a): sc-81569**, our highly recommended monoclonal alternatives to PACT (T-18).