

frizzled-6 (M-19): sc-32152

BACKGROUND

Frizzled-6 (FZD6, also known as frizzled homolog 6 in *Drosophila*) is a seven-transmembrane domain receptor that binds the Wnt ligand and influences macroscopic hair patterning and other tissue polarity events. Frizzled-6 protein contains a signal peptide and a cysteine-rich domain (CRD) in the N-terminal extracellular region, and does not contain a C-terminal PDZ domain-binding motif. Frizzled-3 and frizzled-6 influence neural tube closure and the planar orientation of hair bundles on a subset of auditory and vestibular sensory cells. Madin-Darby canine kidney (MDCK) cells are competent to form tubules *in vitro* and express the frizzled-6 receptor, which is known to form a complex with Wnt-4 through the CRD in this cell type. Frizzled-6 is expressed as a 4.4 kb mRNA in various human tissues, including adult heart, brain, placenta, lung, liver, skeletal muscle, kidney, pancreas, thymus, prostate, testis, ovary, small intestine and colon.

CHROMOSOMAL LOCATION

Genetic locus: FZD6 (human) mapping to 8q22.3; Fzd6 (mouse) mapping to 15 B3.1.

SOURCE

frizzled-6 (M-19) is an affinity purified goat polyclonal antibody raised against a peptide mapping within a C-terminal cytoplasmic domain of frizzled-6 of human origin.

PRODUCT

Each vial contains 200 µg IgG in 1.0 ml of PBS with < 0.1% sodium azide and 0.1% gelatin.

Blocking peptide available for competition studies, sc-32150 P, (100 µg peptide in 0.5 ml PBS containing < 0.1% sodium azide and 0.2% BSA).

APPLICATIONS

frizzled-6 (M-19) is recommended for detection of frizzled-6 of mouse, rat and, to a lesser extent, human origin by Western Blotting (starting dilution 1:200, dilution range 1:100-1:1000), immunoprecipitation [1-2 µg per 100-500 µg of total protein (1 ml of cell lysate)], immunofluorescence (starting dilution 1:50, dilution range 1:50-1:500), immunohistochemistry (including paraffin-embedded sections) (starting dilution 1:50, dilution range 1:50-1:500) and solid phase ELISA (starting dilution 1:30, dilution range 1:30-1:3000).

frizzled-6 (M-19) is also recommended for detection of frizzled-6 in additional species, including equine.

Suitable for use as control antibody for frizzled-6 siRNA (h): sc-39987, frizzled-6 siRNA (m): sc-39989, frizzled-6 shRNA Plasmid (h): sc-39987-SH, frizzled-6 shRNA Plasmid (m): sc-39989-SH, frizzled-6 shRNA (h) Lentiviral Particles: sc-39987-V and frizzled-6 shRNA (m) Lentiviral Particles: sc-39989-V.

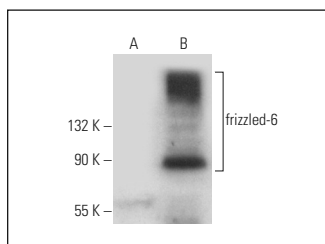
Molecular Weight of frizzled-6: 79 kDa.

Positive Controls: frizzled-6 (m): 293T Lysate: sc-120321.

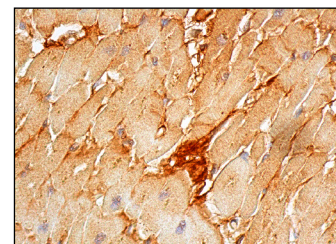
RECOMMENDED SECONDARY REAGENTS

To ensure optimal results, the following support (secondary) reagents are recommended: 1) Western Blotting: use donkey anti-goat IgG-HRP: sc-2020 (dilution range: 1:2000-1:100,000) or Cruz Marker™ compatible donkey anti-goat IgG-HRP: sc-2033 (dilution range: 1:2000-1:5000), Cruz Marker™ Molecular Weight Standards: sc-2035, TBS Blotto A Blocking Reagent: sc-2333 and Western Blotting Luminol Reagent: sc-2048. 2) Immunoprecipitation: use Protein A/G PLUS-Agarose: sc-2003 (0.5 ml agarose/2.0 ml). 3) Immunofluorescence: use donkey anti-goat IgG-FITC: sc-2024 (dilution range: 1:100-1:400) or donkey anti-goat IgG-TR: sc-2783 (dilution range: 1:100-1:400) with UltraCruz™ Mounting Medium: sc-24941. 4) Immunohistochemistry: use ImmunoCruz™: sc-2053 or ABC: sc-2023 goat IgG Staining Systems.

DATA



frizzled-6 (M-19): sc-32152. Western blot analysis of frizzled-6 expression in non-transfected: sc-117752 (A) and mouse frizzled-6 transfected: sc-120321 (B) 293T whole cell lysates.



frizzled-6 (M-19): sc-32152. Immunoperoxidase staining of formalin fixed, paraffin-embedded human heart muscle tissue showing membrane and cytoplasmic staining of myocytes.

SELECT PRODUCT CITATIONS

1. Sugiyama, Y., et al. 2010. Secreted frizzled-related protein disrupts PCP in eye lens fiber cells that have polarised primary cilia. *Dev. Biol.* 338: 193-201.

STORAGE

Store at 4° C, ****DO NOT FREEZE****. Stable for one year from the date of shipment. Non-hazardous. No MSDS required.

RESEARCH USE

For research use only, not for use in diagnostic procedures.



Try **frizzled-6 (C-12): sc-393791** or **frizzled-6 (D-2): sc-393113**, our highly recommended monoclonal alternatives to frizzled-6 (M-19).