

Dynein IC2, cytosolic (S-12): sc-32199

BACKGROUND

Dyneins are multi-subunit, high molecular weight ATPases that interact with microtubules to generate force by converting the chemical energy of ATP into the mechanical energy of movement. Cytoplasmic or axonemal Dynein heavy, intermediate, light and light-intermediate chains are all components of minus end-directed motors; the complex that transports cellular cargos towards the central region of the cell. Axonemal Dynein motors contain one to three non-identical heavy chains and cause a sliding of microtubules in the axonemes of cilia and flagella in a mechanism necessary for cilia to beat and propel the cell. Cytoplasmic Dynein is an approximately 12 subunit complex of 2 heavy chains, 2 intermediate chains to anchor Dynein to its cargo, 4 smaller intermediate chains and several light chains. It performs functions necessary for cell survival such as organelle transport and centrosome assembly. The carboxy-terminus of Dynein is important for microtubule-dependent motility and is highly conserved, while the amino-terminal regions are more variable. Several proteins regulate Dynein activity, including Dynactin, LIS1 and nudel (nudE-like).

REFERENCES

- Mallik, R., et al. 2004. Cytoplasmic dynein functions as a gear in response to load. *Nature* 427: 649-652.
- Malikov, V., et al. 2004. Cytoplasmic dynein nucleates microtubules to organize them into radial arrays *in vivo*. *Mol. Biol. Cell* 15: 2742-2749.
- Asai, D.J., et al. 2004. The dynein heavy chain family. *J. Eukaryot. Microbiol.* 51: 23-29.
- Li, J., et al. 2005. NudEL targets dynein to microtubule ends through LIS1. *Nat. Cell Biol.* 7: 686-690.
- Seetharam, R.N., et al. 2005. High speed sliding of axonemal microtubules produced by outer arm dynein. *Cell Motil. Cytoskeleton* 60: 96-103.
- Lee, W.L., et al. 2005. The offloading model for dynein function: differential function of motor subunits. *J. Cell Biol.* 168: 201-207.

CHROMOSOMAL LOCATION

Genetic locus: DNIC2 (human) mapping to 2q31.1; Dncic2 (mouse) mapping to 2 C2.

SOURCE

Dynein IC2, cytosolic (S-12) is an affinity purified goat polyclonal antibody raised against a peptide mapping near the C-terminus of Dynein IC2, cytosolic of human origin.

PRODUCT

Each vial contains 200 µg IgG in 1.0 ml of PBS with < 0.1% sodium azide and 0.1% gelatin.

Blocking peptide available for competition studies, sc-32199 P, (100 µg peptide in 0.5 ml PBS containing < 0.1% sodium azide and 0.2% BSA).

RESEARCH USE

For research use only, not for use in diagnostic procedures.

APPLICATIONS

Dynein IC2, cytosolic (S-12) is recommended for detection of Dynein intermediate chain 2, cytosolic of mouse, rat and human origin by Western Blotting (starting dilution 1:200, dilution range 1:100-1:1000), immunoprecipitation [1-2 µg per 100-500 µg of total protein (1 ml of cell lysate)], immunofluorescence (starting dilution 1:50, dilution range 1:50-1:500) and solid phase ELISA (starting dilution 1:30, dilution range 1:30-1:3000).

Dynein IC2, cytosolic (S-12) is also recommended for detection of Dynein intermediate chain 2, cytosolic in additional species, including equine, canine, bovine, porcine and avian.

Suitable for use as control antibody for Dynein IC2, cytosolic siRNA (h): sc-44683, Dynein IC2, cytosolic siRNA (m): sc-44684, Dynein IC2, cytosolic shRNA Plasmid (h): sc-44683-SH, Dynein IC2, cytosolic shRNA Plasmid (m): sc-44684-SH, Dynein IC2, cytosolic shRNA (h) Lentiviral Particles: sc-44683-V and Dynein IC2, cytosolic shRNA (m) Lentiviral Particles: sc-44684-V.

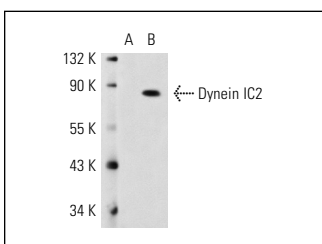
Molecular Weight of Dynein IC2, cytosolic: 72 kDa.

Positive Controls: Dynein IC2, cytosolic (h2): 293 Lysate: sc-112239.

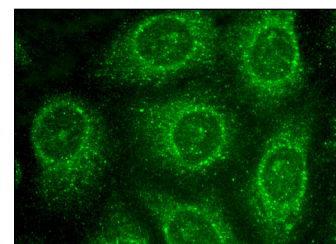
RECOMMENDED SECONDARY REAGENTS

To ensure optimal results, the following support (secondary) reagents are recommended: 1) Western Blotting: use donkey anti-goat IgG-HRP: sc-2020 (dilution range: 1:2000-1:100,000) or Cruz Marker™ compatible donkey anti-goat IgG-HRP: sc-2033 (dilution range: 1:2000-1:5000), Cruz Marker™ Molecular Weight Standards: sc-2035, TBS Blotto A Blocking Reagent: sc-2333 and Western Blotting Luminol Reagent: sc-2048. 2) Immunoprecipitation: use Protein A/G PLUS-Agarose: sc-2003 (0.5 ml agarose/2.0 ml). 3) Immunofluorescence: use donkey anti-goat IgG-FITC: sc-2024 (dilution range: 1:100-1:400) or donkey anti-goat IgG-TR: sc-2783 (dilution range: 1:100-1:400) with UltraCruz™ Mounting Medium: sc-24941.

DATA



Dynein IC2, cytosolic (S-12): sc-32199. Western blot analysis of Dynein IC2 expression in non-transfected: sc-110760 (A) and human Dynein IC2 transfected: sc-112239 (B) 293 whole cell lysates.



Dynein IC2, cytosolic (S-12): sc-32199. Immunofluorescence staining of methanol-fixed HeLa cells showing cytoplasmic localization.

STORAGE

Store at 4° C, **DO NOT FREEZE**. Stable for one year from the date of shipment. Non-hazardous. No MSDS required.